



27th Annual Ranch-Raised, Rancher-Approved Bull Sale

TUESDAY, FEBRUARY 11, 2020

12:00 p.m. MT

**Philip (SD) Livestock Auction
Selling 75 Yearling Charolais Bulls**



2020 FEATURED SIRES

PZC Stetson (Firewater)
JAB David Allen Coe 511P
MJ MR Turton 703
BRCHC Raising Cane 7501

MC LM All In
CC Zane 2342P
JAB Roller Coaster Ride
WCR SIR MAC 447P ET

- *Unconditional One Year Guarantee on Bull Purchases*
- *5% discount on 5-9 head*
- *10% discount on 10 or more head*
- *Free keep 'til May 1st*
- *Free Delivery*



www.CheyenneCharolais.com
f Cheyenne Charolais

of Wasta, South Dakota
Joel Deering cell: 605-381-0885
Kandi Deering cell: 605-430-6260
jdiamond1969@yahoo.com



www.CheyenneCharolais.com



Cheyenne Charolais

Joel Deering • (605) 381-0885

17960 Base Line Rd.

Wasta, SD 57791

jdiamond1969@yahoo.com

(e-mail checked daily)

Kandi Deering • (605) 430-6260

SALE DATE AND TIME: Tuesday, February 11, 2020 – 12:00 Noon (MT)

SALE LOCATION: Philip Livestock Auction • Philip, South Dakota

SALE DAY PHONE: (605) 859-2577 or register to bid online at: DVAuction
(must also register with sale barn -- www.philiplivestock.com)

AUCTIONEER: Jeff Long • Enning, SD • (605) 515-0186

SALE REPRESENTATIVES: Don Ravellette • (605) 859-2516, *RPI Promotions*

Dan Piroutek • Milesville, SD • (605) 544-3316, *Tristate Livestock News*

Ryan Casteel • (605) 423-6000, *Cattle Business Weekly*

TERMS & CONDITIONS

TERMS: Terms of the sale are cash or check payable to Philip Livestock Auction. All settlements must be made with the clerks of the sale before any cattle will be released.

BIDS: Every animal is to be sold and will be sold. No by-bidding is permitted. The highest bidder is the buyer.

ABSENTEE BIDS: If you cannot be with us on sale day, we will handle any bids in confidence. Please contact Cheyenne Charolais, the auctioneer, or any of the sale representatives.

DISPUTES: The auctioneer will have the right to settle any disputes that may arise and his decision in such matters is final.

ANNOUNCEMENTS: Errors discovered in the catalog will be corrected by announcements from the auction stand at sale time and such announcements will take precedence over printed material.

REGISTRATION CERTIFICATES: All bulls are eligible to be registered with the AICA.

BREEDER'S GUARANTEE: Our customers' satisfaction with our cattle is important to us; please call if problems of any kind occur with your purchase. **BULLS ARE GUARANTEED FOR 1 FULL YEAR!**

BREEDING GUARANTEE: 100%. Should a bull fail to pass a semen test, full credit or a replacement will be issued.

DEATH OR PERMANENT INJURY GUARANTEE: Purchase price, minus salvage value, prorate usage fee 'til injury.

HEALTH: Bulls have received all shots and boosters for blackleg, foot rot and respiratory diseases and have been poured and wormed.

VETERINARIAN: Dr. Jim McConaghy, Golden Veterinary Services, Wall, SD • (605) 279-2077

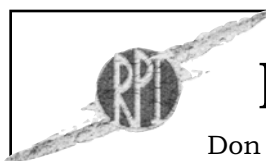
ACCIDENTS & LIABILITIES: All persons attend the sale at their own risk and neither Cheyenne Charolais, nor Philip Livestock assumes any liability in case of accident or loss of property.

MAIL BIDS: Bidders unable to be present may send their bids and instructions to Cheyenne Charolais, the auctioneer, or any of the sale representatives. Phone bids will be accepted on sale day: **(605) 859-2577**. Bidders may also pre-register to bid online at DVAUCTION!

DELIVERY: All bulls will be delivered free of charge after May 1.

***DISCOUNTS:** \$150 off per bull if you haul home sale day.

--- Volume discount 5% on 5, 6% on 6, 7% on 7, 8% on 8, 9% on 9, 10% on 10 or more.



Catalog produced by:

RPI Promotions

Don Ravellette • (605) 685-5147

Beau Ravellette • (605) 685-8155

P.O. Box 788 • Philip, South Dakota 57567

www.rpipromotions.com

Welcome to our 27th Annual Bull Sale!

The 2020's are upon us and with the new decade we're proud to present to you another great set of Charolais bulls.

The greatest thing about the past year was the abundant moisture, but it also brought with it some incredible challenges—especially when you calve along two waterways that did more than their share of flooding last spring. Keeping everything going through several snowstorms and the mud, ice and floods that followed was one of the most difficult things we've ever had to do.

At one point in April, about the only dry spot we could find were a few patches of ground near the barnyards and one day over 500 cows at various stages of calving were marooned right behind our house. Fortunately, we didn't have much problem with sickness but humans and cows alike were sure happy when we could finally start pairing out to the River.

In between storms, we got caught up on sleep, tagging and weighing but in all the hubbub and the extra help we had, the tag bags sure didn't stay in order real well as you'll notice going through the bulls in the catalog. I was just glad we got through the whole mess with minimal losses, as I had some excellent part-time helpers, a wife that dang near worked herself to death last spring, and quite a bit of luck.

Summer brought an abundant hay crop and lots more rain and Cheyenne River and Box Elder creek flooding. We didn't get time to roll the creep feeders out this year, and it did cost us some weaning weight both in our feeder calves and our bull crop. All the clover and green grass we had all summer long sure made for some fat cows, but the calves were a little greener. This year's set of bulls is a little lighter at this time compared to 2019, but they are really coming on and I think you'll be impressed by the overall quality and depth of this offering.

Once again, these bulls are developed on CHS Bull Challenger (a high protein, high fiber product) and free choice alfalfa hay. I've found that this system really keeps joints together on the bulls and they just flat grow without getting overly fat like they can on a corn-based ration. We spend time with these critters every day, and dispositions have been assessed and scored, which I don't think you see very often in other programs. Any that were a little over the top in that regard felt a little discomfort from a Callicrate bander.

I still believe Charolais is the best choice you can make for your crossbreeding program to maximize hybrid vigor from a good set of cows. We've got a couple of guys who have been "making the switch" to Charolais bulls in the last couple of years and have got nothing but great reports of significantly bigger calves in the Fall than their straight blacks or reds. If you're considering our program for the 1st time, you'll find a great selection of eye-appealing calves to choose from and will receive great value for your bull-buying dollars. If you're one of our many repeat customers, I hope you can come again to evaluate this year's crop and find a few to add to your battery of good bulls at home.



Granddaughter Ansley & Bruizer,
our summer herd monitors.

Special Notes...

If distance, weather or other obligations prevent you from attending in person, please register with the sale barn (605-859-2577) and also with DV Auction to get approved for internet bidding. A lot of our customers have used this tool over the years and have been very happy with the bulls when delivered.

Reminders -

- Disposition scores
- \$150 off per bull if you haul home sale day.
- Volume discount 5% on 5, 6% on 6, 7% on 7, 8% on 8, 9% on 9, 10% on 10 or more.
- Bull Guarantee is for ANYTHING for one full year.



When Heaven opens up on the Cheyenne River

Thank you so much to our past customers. You guys and gals are the reason we keep doing this and without your support we couldn't continue. We're continuing our Producer of the Year award and this year the recipient is Leonard Andersen of Hayes, SD. Leonard has been buying bulls from me for longer than I can remember and you'll never meet a nicer guy. His \$2000 credit is good at this or any future sale.

Thanks again to everyone from past customers, my family, all our helpers, the advertisers, herd bull suppliers, and sale personnel who help make this sale possible and we hope you can make it to Philip on February 11th. If you can't make it, please register beforehand with the sale barn and DV Auction to get approved for bidding. We do offer free delivery after May 1st but have had to limit free delivery to the 1st 400 miles—after that at cost.

Sincerely, Joel & Kandi Deering & Kiddos

Past Producers of the Year:

2009	Gary Snook, Midland
2010	Ross Williams, Philip
2011	Norval Millard, Presho
2012	Matt Brothers, Kenny & Stanley, Elm Springs
2013	Keith Reuer, Reliance
2014	Tim & Bob Peppel, St. Charles
2015	Chuck O'Connor, Philip
2016	Brady & Monte Schofield, Midland
2017	Grant Patterson, Kadoka
2018	Steve Thomas, Presho
2019	Lynn Fields, Elm Springs
2020	Leonard Andersen, Hayes

REFERENCE SIRES



PZC STETSON 5008 ET

Reg. EM865215 Calved: 1-16-15 BW: 90

[THOMAS OAHE WIND 0772ET P
TR MR FIRE WATER 5792RET
 EM704588 [THOMASSWISSERSWEET1764ET
 [JWK IMPRESSIVE D040 ET
THOMAS MS IMPRESSIVE0641
 F873178 [BCI MISS VERYLIMIT 6033P
 [LT WYOMING WIND 4020 PLD
 [THOMAS MS CAMELOT 5646
 [LHD CIGAR E46
 [THOMAS MS BONANZA 8698
 [WCR SIR FA MAC 2244
 [HBR LADY LIZ 721 P
 [SKYMONT P UNLIMITED 0115
 [BCR ROSE GIRL 0093

	CE	BW	WW	YW	Milk	MCE	MTL	SC
EPD	3.0	1.0	25	52	10	1.3	23	1.0
Acc	PE	PE	PE	PE	PE	PE	PE	PE
%RK	70	60	70	55	45	90	60	35

✓ *Grand Champion at 2016 Black Hills Stock Show! Sires quiet, easy-fleshing bulls with superior eye appeal! I only wish we had more of his sons!*



PZC STETSON 5008 ET



WCR SIR IMPRESSIVE 5171 P

Reg. M862676 Calved: 3-6-15 BW: 100 Adj WW: 758/104

[WCR SIR FA MAC 2244
JWK IMPRESSIVE D040 ET
 M413653 [HBR LADY LIZ 721 P
 [CFL NO QUESTION 732
WCR MS NO QUESTION 0187 P
 F1123843 [WCR MS PAUL 5355 P
 [WCR SIR FAB MAC 809
 [WCR MISS CENTURY 920 TWN
 [HBR IMPACT
 [HBR LADY MACK 459 P
 [EC NO DOUBT 2022 P
 [VJ MS POLAROID 3203 P/S
 [WCR SIR PAUL 9803 ET P
 [WCR MISS DUKE 625 P

	CE	BW	WW	YW	Milk	MCE	MTL	SC
EPD	3.6	2.4	34	62	12	3.1	29	0.2
Acc	0.27	0.39	0.33	0.33	0.23	0.20		PE
%RK	70	85	30	35	35	80	30	95

✓ *Deep-bodied, high performing sire with eye appeal!*



OW MAXIMIZER 4044 PLD

Reg. M842125 Calved: 1-14-14 BW: 66 ADJ. WW: 676/108

[FC MAGIC WIND 0105 P
DC-OW MAXIMIZER 385PLD
 M675875 [DC MISS JOSEY 0215 PLD
 [WCR SIR PAUL 4377 ET P
OW MISS PAUL 2041 PLD
 F1148821 [OW MISS SANDCREEK U 105
 [LT WYOMING WIND 4020 PLD
 [FUNKS MS HI MAGIC 704 P
 [SCV JOE MONTANA
 [PD MISS SENTINEL 5323PLD
 [WCR SIR PAUL 9803 ET P
 [WCR MISS SUPREME 452
 [MC-OW SANDCREEK 375
 [OW MISS ABSOLUTE S 070 PLD

	CE	BW	WW	YW	Milk	MCE	MTL	SC
EPD	9.0	-4.6	26	42	12	1.3	25	1.2
Acc	0.28	0.39	0.32	0.32	0.20	0.17	0.00	0.27
%RK	20	3	65	80	35	90	45	25

✓ *This Oakwater bull is doing a tremendous job! Good hair, good growth & light BW's!*



WCR SIR WYOMING WIND 5504 ET P

Reg. EM864098 Calved: 3-17-15 BW: 99 ADJ. WW: 736/100

[SCHURRTOP 5627
LT WYOMING WIND 4020 PLD
 M411450 [LT CHAP'S LADY 2170P
 [WCR SIR PAUL 9803 ET P
WCR MS PAUL 448 P
 F1000589 [WCR MISS IMPRESS 2402ETP
 [WCR SIR DUKE 783
 [MISS SUGAR VALLEY 908
 [LT UNLIMITED CHAPS 0109
 [LT PRAIRIE MAIDEN 8095
 [PAUL 109/9
 [WCR MISS TRADITION 9612P
 [JWK IMPRESSIVE D040 ET
 [WCR MISS TRADITION 3472

	CE	BW	WW	YW	Milk	MCE	MTL	SC
EPD	5.6	0.3	25	42	3	5.6	15	0.8
Acc	PE	PE	PE	1	PE	PE	PE	PE
%RK	50	45	70	80	85	55	90	65

✓ *Big, long son of Wind from Wienk's. Sires high performing bulls with good dispositions and a little extra frame!*

Notes ...

REFERENCE SIRES

E JAB ROLLER COASTER RIDE 515 P

Reg. EM870536
BW: 80

Calved: 5-7-15
Adj. WW: 717/100

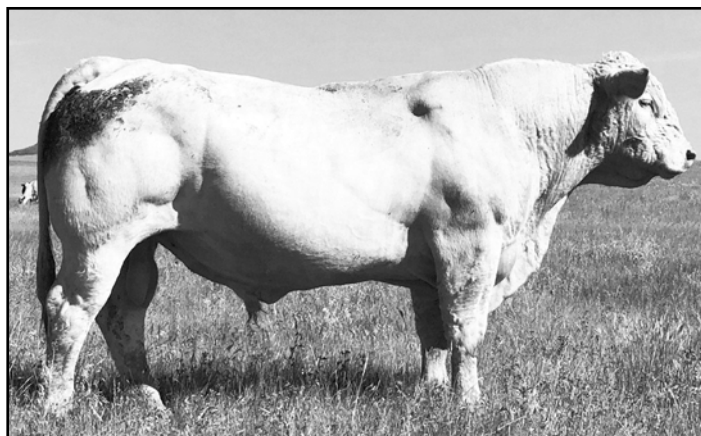
[LT ASSERTION 1277 P
LT BLUEGRASS 4017 P
M686569 [LT PEARL'S BREEZE 2236 P

[TR MR FIRE WATER 5792RET
JAB COTTON CANDY 001 POLLED
F1119733 [JAB ONE HOT MAMMA 399 P

[EATONS ASSERT 9171
[LT ALLI'S CLASS 9140 P
[LT WYOMING WIND 4020 PLD
[LT UNLIMITED PEARL 7053P
[THOMAS OAHE WIND 0772ET P
[THOMASSWISSERSWEET1764ET
[HTA WHITEHOT 105A
[EC SIERRA 018 PLD

	CE	BW	WW	YW	Milk	MCE	MTL	SC
EPD	4.9	1.0	25	49	11	11	7.4	1.1
Acc	PE	PE	PE	PE	PE	PE	PE	PE
%RK	55	60	70	65	45	30	60	30

✓ Very excited to present this bull's 1st sons! They're special!



JAB ROLLER COASTER RIDE 515 P

E F CC ZANE 2342 PLD

Reg. M834810

Calved: 5-1-12

BW: 89

[TR MR FIRE WATER 5792RET
TR MR FIREWATER 0776X PLD
EM796097 [ALC KATE T07K

[LT WYOMING WIND 4020 PLD
THREE TREES ALICIA2342ET
F970984 [THREE TREES ALICIA308ET

[THOMAS OAHE WIND 0772ET P
[THOMASSWISSERSWEET1764ET
[BALDRIDGE FASTTRACK 82F
[DCR MISS CON 80
[SCHURRTOP 5627
[LT CHAP'S LADY 2170P
[WCR SIR T 2254
[RAC ALICIA 3089 POLLEDET

	CE	BW	WW	YW	Milk	MCE	MTL	SC
EPD	3.9	1.2	26	45	3	6.9	16	
Acc	PE	PE	PE	PE	PE	PE	PE	
%RK	70	65	70	75	85	40	90	

✓ RES Champion BHSS 2014. Sires thickness, docility and eye appeal.

E H MJ MR TURTON 703 PLD

Reg. EM897008

Calved: 2-6-17

BW: 86

[TR MR FIRE WATER 5792RET
TR PZC MR TURTON 0794 ET
EM790987 [THOMAS MS IMPRESSIVE0641

[CARDINALS PATRIOT C431
CARDINALS LADY G176 P
F1055156 [CARDINALS LADY B275P

[THOMAS OAHE WIND 0772ET P
[THOMASSWISSERSWEET1764ET
[JWK IMPRESSIVE D040 ET
[BCI MISS VERYLIMIT 6033P
[LHD CIGAR E46
[BVF BABE 3803
[CARDINALS MAVERICK 9023P
[CARDINALS LADY 851

	CE	BW	WW	YW	Milk	MCE	MTL	SC
EPD	8.7	0.3	23	40	9	9.4	20	0.6
Acc	PE	PE	PE	PE	PE	PE	PE	PE
%RK	25	50	85	85	55	10	75	75

✓ This bull is fast becoming one of my favorites. "Beaver" sires above average everything. Several bulls in the sale to choose from.

E G JAB DAVID ALLEN COE 511 PLD

Reg. M862131

Calved: 3-29-15

BW: 94

Adj WW: 783/100

[LT BLUEGRASS 4017 P
LT LEDGER 0332 P
M791626 [LT BRENDA 6120 PLD

[JAB CLIFFORD 577 PLD
JAB DARLING 226 PLD TW
F1163080 [JAB TOP JEWEL 008 PLD

[LT ASSERTION 1277 P
[LT PEARL'S BREEZE 2236 P
[LT RIO BRAVO 3181 P
[LT BRENDA'S EASE 3055PLD
[JWK IMPRESSIVE D040 ET
[JAB ONE HOT MAMMA 399 P
[JAB TOP SHELF 690 POLLED
[C-B MS HOTLINE 815

	CE	BW	WW	YW	Milk	MCE	MTL	SC
EPD	5.9	-0.2	30	58	3	4.5	18	1.2
Acc	PE	PE	PE	PE	PE	PE	PE	PE
%RK	50	40	55	50	85	65	85	25

✓ Lots of length and eye appeal. Sires very sound-structured bulls with a little extra frame.

Notes ...

REFERENCE SIREs



BRCHE RAISING CANE 7501 PLD

Reg. M892344

Calved: 1-7-17

[LT LONG DISTANCE 9001 PLD
M&M OUTSIDER 4003 PLD
M846631 [M&M MS CARBINE 1567 PLD

[TR SMOKEONTHWATER ET
CC SMOKETTE 4076 ET P
EF1208175 [ALC KATE T07K

[LT SILVER DISTANCE 5342P
[LT BELLE 7026 P
[M&M RAPTOR 8122 PLD
[MS COOLEY JPOT 1107N9 ET
[THOMAS OAHE WIND 0772ET P
[THOMASWISSERSWEET1764ET
[BALDRIDGE FASTTRACK 82F
[DCR MISS CON 80

	CE	BW	WW	YW	Milk	MCE	MTL	SC
EPD	6.8	-0.2	37	64	4	4.6	22	0.5
Acc	0.20	0.30	0.27	0.23	0.15	0.13		0.13
%RK	40	35	30	40	80	65	65	80

✓ Cane was Grand Champion at the 2018 BHSS. Extreme length, style and good structure in his sons.



TR DF MR GAME ON X56D ET PLD

Reg. EM886476

Calved: 3-10-16

BW: 78

Adj WW: 813/98

[TR PZC MR TURTON 0794 ET
ZKCC GAME ON 266Z
M820913 [MISS KEY TOREE 163S

[TR MR FIRE WATER 5792RET
TR PZC IMPRESSIVE LADY 0790ET
EF1121686 [THOMAS MS IMPRESSIVE0641

[TR MR FIRE WATER 5792RET
[THOMAS MS IMPRESSIVE0641
[KEYS MCHENRY 24M
[MISS KEY TOREE 169M
[THOMAS OAHE WIND 0772ET P
[THOMASWISSERSWEET1764ET
[JWK IMPRESSIVE D040 ET
[BCI MISS VERYLIMIT 6033P

	CE	BW	WW	YW	Milk	MCE	MTL	SC
EPD	0.8	2.0	29	55	8	3.5	22	1.0
Acc	PE	PE	PE	PE	PE	PE	PE	PE
%RK	85	80	60	55	65	75	65	50

✓ Excellent sire from the '17 Thomas sale that I'm really pleased with so far. Linebred Firewater-excellent eye appeal!

Notes ...



WCR SIR MAC 447 ET PLD

Reg. EM848722

Calved: 2-16-14

BW: 74

Adj WW: 654/100

[FRISBIE MAC POLLED 257
WCR SIR FAB MAC 809
M202427 [MISS LW FA BINGO 229

[BR DUKE 261
WCR MS DUKE 530 P
F1024228 [WCR MISS MAC 3287 P

[FZ MAC 236 POLLED
[ROXIE POLLED
[BEPHEGOR
[MISS LW FACCO 7010
[BR DUKE 295
[BR ANN 14
[WCR SIR MAC 9920 ETP
[WCR MISS PLAYWRIGHT 8266

	CE	BW	WW	YW	Milk	MCE	MTL	SC
EPD	-0.2	-0.7	19	33	8	-4.2	18	0.4
Acc	PE	PE	PE	I	PE	PE	PE	PE
%RK	90	30	90	90	60	100	85	85

✓ I honestly think "Wienky" could be used on heifers. Moderate frame and BW in his sons.



JRL MO MONEY 1506 PLD

Reg. M864788

Calved: 1-24-15

BW: 98

Adj WW: 865/97

[LT BLUEGRASS 4017 P
LT LEDGER 0332 P
M791626 [LT BRENDA 6120 PLD

[WDZ NORTHERN WIND 8022 PLD ET
JRL WDZ HONOR 106 PLD
F1133541 [FINK PERFECTION 7743 248 GM ET

[LT ASSERTION 1277 P
[LT PEARL'S BREEZE 2236 P
[LT RIO BRAVO 3181 P
[LT BRENDA'S EASE 3055PLD
[LT WYOMING WIND 4020 PLD
[D&D MISS COVERGIRL
[M6 GRID MAKER 104 PET
[M6 MS E46'S DUKE 248 PET

	CE	BW	WW	YW	Milk	MCE	MTL	SC
EPD	4.8	1.0	30	61	5	6.6	20	
Acc	0.26	0.37	0.29	0.21	0.21	0.19	0.24	
%RK	60	60	55	45	75	40	75	

✓ "Mo" is becoming a good all-around sire of above average performance and rock solid range bulls. Probably our biggest mature herd sire. He's always been 100% sound and sires same.



DEERING'S
HEYENNE
HAROLAIS

Thanks for your interest in our program!

DISPOSITION SCORE

We are including this on every lot – disposition is a big priority and these scores are my own assessment from feeding by hand twice a day and working these bulls several times. Disposition also included in the guarantee!

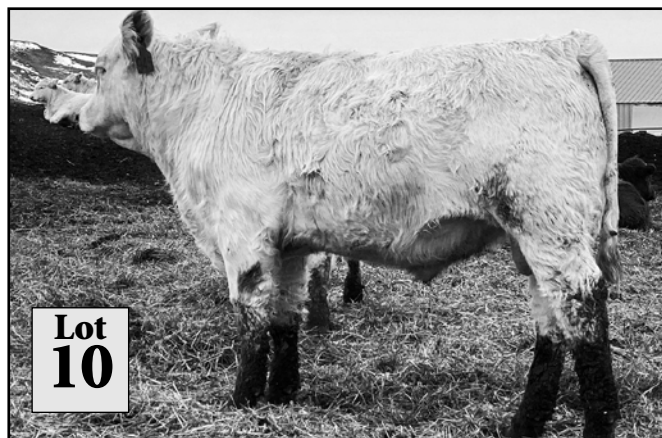
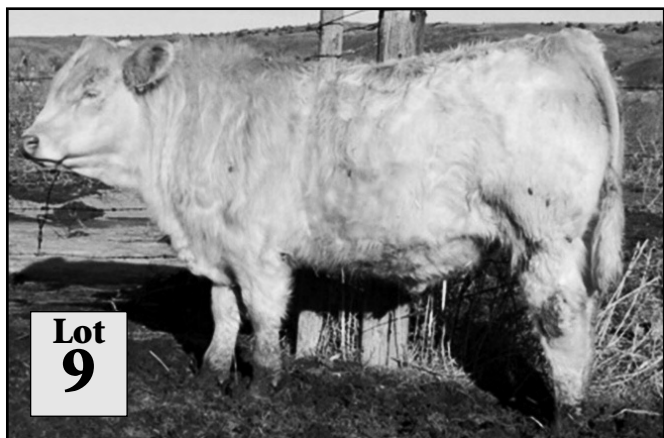
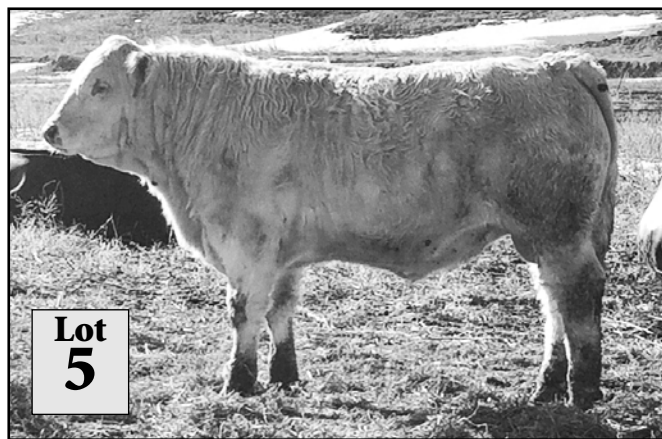
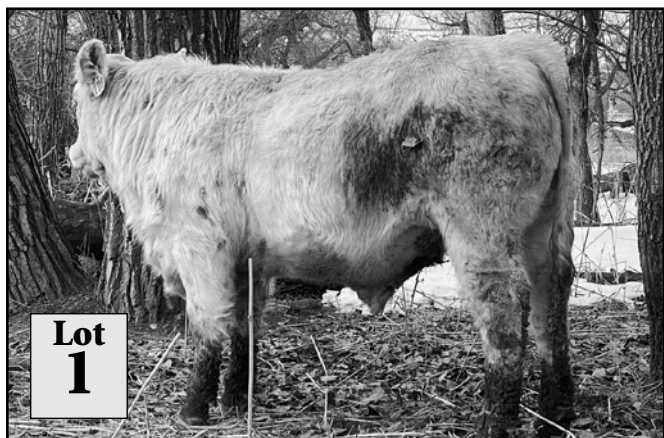
- Scores 1 – Nuts
 2 – Wild and/or Mean/High-Headed
 3 – Average; Normally mild but could act up potentially in the chute or if handled rough
 4 – Above Average
 5 – Excellent; has never shown at any time, anything but “Happy Bull” behavior
 5+ Pet! Might need a stick to get him out of the way, likes to get a scratch now and then!

Definitely no “1” or “2”s in the sale!

YEARLING BULLS

Lot	ID	Sire P/S/D Dam/Sire of Dam	BD	BW EPD	Act. WW 10-15-19	Adj. WW/Ratio EPD	100 Day ADG	Adj. YW/Ratio EPD
1	100Y P	[MJ MR TURTON [104/JUSTICE 504	3-7-19	98 1.4	750	701/112 33	4.55	1430/124 51
<i>*Big ol’ boy! All he’s ever done is grow!</i>								Disp: 5+
2	9A11 P	[MJ MR TURTON [2B83/WIND 016	3-16-19	97 1.3	675	653/104 30	3.67	1240/108 49
<i>*Spitting image of his sire, out of one of our very best cows!</i>								Disp: 5+
3	9A13 P	[SIR DUKE 479 [524/ MC LM ALL IN	3-16-19	98 2.1	710	697/112 32	3.39	1239/108 55
<i>*Super - thick, deep and really good.</i>								Disp: 5
4	9306 P	[JRL MO MONEY [661/BULLET	4-7-19	94 1.6	730	776/124 35	4.17	1442/125 59
<i>*Big fella with awesome performance.</i>								Disp: 5
5	914 P	[WELLS LINE OF FIRE [7G5/CIGAR 406	3-25-19	95 0.9	710	713/114 19	3.78	1317/115 31
<i>*Thick, deep and gentle bull.</i>								Disp: 5+
6	943 P	[TR MR GAME ON [9133/JUSTICE 504	3-31-19	101 2.0	605	653/104 26	4.05	1302/113 50
<i>*Very eye-appealing, deep-bodied calf.</i>								Disp: 5
7	918 P	[JRL MO MONEY [6340/COPPERHEAD	3-27-19	95 0.8	630	667/107 28	3.67	1253/109 53
<i>*Very fancy, easy going calf.</i>								Disp: 5+
8	9282 P	[MC LM ALL IN [4394/COPPERHEAD	4-11-19	81 -1.2	610	661/106 38	3.68	1250/108 56
								Disp: 3.5
9	9A5 P	[PZC STETSON [8-77B/CIGAR 406	3-14-19	82 0.8	650	658/105 29	3.78	1262/110 50
								Disp: 5
10	945 P	[JAB ROLLER COASTER RIDER [155/JUSTICE 818	3-20-19	84 0.2	580	571/91 24	3.50	1131/98 41
								Disp: 5
11	9340 D	[JRL MO MONEY [2B109/WIND 016	3-29-19	96 1.6	695	710/114 33	4.28	1394/121 60
								Disp: 5
12	937 P	[JAB DAVID ALLEN COE [5125/COPPERHEAD	4-6-19	103 2.3	650	697/112 36	4.22	1372/119 62
								Disp: 5
13	9104 P	[OW MAXIMIZER 4044 [156/JUSTICE 504	4-9-19	78 -3.0	550	590/94 27	3.61	1167/101 38
<i>*Max 4044 is really consistant on very low BW.</i>								Disp: 5

YEARLING BULLS



YEARLING BULLS

Lot	ID	Sire P/S/D Dam/Sire of Dam	BD	BW EPD	Act. WW 10-15-19	Adj. WW/Ratio EPD	100 Day ADG	Adj. YW/Ratio EPD
14	9170 P	[PZC STETSON [6296/WIND 016	4-15-19	90 1.0	525	577/92 24	3.83	1190/103 43 Disp: 5
15	9G17 P	[PZC STETSON [2B89/JUSTICE 818	3-20-19	85 0.8	670	658/109 29	4.00	1298/113 49 Disp: 5+
<i>*Big, long and curly!</i>								
16	9389 P	[WELLS LINE OF FIRE [4244/COPPERHEAD	4-12-19	92 1.3	660	718/111 19	5.00	1518/132 28 Disp: 5+
<i>*Excellent bull! EPD's have absolutely no merit as to the growth potential of this great calf!</i>								
17	90Y P	[WCR SIR IMPRESSIVE [4204/BULLET	3-5-19	87 1.2	705	652/104 33	3.83	1264/110 58 Disp: 5
18	9192 P	[TR DF MR GAME ON [4158/MAX 89	3-30-19	95 1.8	675	692/111 30	3.94	1322/115 54 Disp: 5
19	91Y D	[BRSCHE RAISING CANE [166/JUSTICE 818	3-5-19	89 -0.1	730	675/108 30	3.00	1155/100 47 Disp: 5
20	NT P	[JAB ROLLER COASTER RIDE [736/CORONA	3-9-19	95 1.3	690	649/104 26	3.50	1209/105 50 Disp: 5+
<i>*Little chilly when he was born! Raised on a nurse cow. Big, long, gentle calf!</i>								
21	9262 P	[JAB ROLLER COASTER RIDE [101/TRIPLE EASE	4-2-19	89 0.9	620	644/102 25	2.83	1096/95 41 Disp: 5



YEARLING BULLS

Lot	ID	Sire P/S/D Dam/Sire of Dam	BD	BW EPD	Act. WW 10-15-19	Adj. WW/Ratio EPD	100 Day ADG	Adj. YW/Ratio EPD
22	9376 P	[JAB ROLLER COASTER RIDE 4-16-19 [104/JUSTICE 504		88 0.6	590	653/104 30	3.72	1248/109 49
								Disp: 5
23	9128 P	[OW MAXIMIZER 4044 [162/CIGAR 406	3-28-19	84 -1.8	675	686/110 31	3.61	1263/110 46
								Disp: 5
		<i>*Nice combo of moderate BW and good growth.</i>						
24	9G4 P	[JRL MO MONEY [4458/BULLET	3-17-19	97 1.6	660	641/103 24	4.22	1316/114 59
								Disp: 5
25	9G9 P	[JRL MO MONEY [2-44G/JUSTICE 818	3-18-19	94 1.2	625	609/97 26	3.50	1169/102 43
								Disp: 4
26	93B P	[MJ MR TURTON [3400/JUSTICE 818	3-10-19	91 0.8	560	530/85 21	3.55	1098/95 39
								Disp: 5
		<i>*Some of the calves born in the storm got stunted a little. This is a pretty darn good calf.</i>						
27	9178 P	[JRL MO MONEY [627/BULLET	4-5-19	95 2.0	635	669/107 33	4.23	1279/111 55
								Disp: 3
		<i>*Not going to be the calmest bull in the pen, but he's dang good.</i>						
28	94Y P	[OW MAXIMIZER 4044 [6116/MAXIMIZER X89	3-5-19	77 -3.1	615	604/97 27	3.33	1137/99 39
								Disp: 5
		<i>*Double-bred Maximizer that should be really easy calving!</i>						
29	9203 P	[JRL MO MONEY [176/CIGAR 406	4-17-19	90 0.9	575	639/102 28	3.61	1216/106 55
								Disp: 5



**Lot
19**



**Lot
20**



**Lot
22**



**Lot
23**

YEARLING BULLS

Lot	ID	Sire P/S/D Dam/Sire of Dam	BD	BW EPD	Act. WW 10-15-19	Adj. WW/Ratio EPD	100 Day ADG	Adj. YW/Ratio EPD
30	948	[WCR SIR IMPRESSIVE P [114/ALICIA'S CIGAR	3-15-19	85 1.2	630	607/97 31	4.05	1255/109 57
<i>*Coyote got a hunk of his tail. Thick, burly brute!</i>								Disp: 5+
31	95Y	[WELLS LINE OF FIRE P [708/BIG WIND	3-5-19	81 0.3	595	586/94 18	3.33	1119/97 20
<i>*Out of a great ol' cow. Not as much milk as she used to have.</i>								Disp: 5
32	910	[WCR SIR IMPRESSIVE P [7-22/TRIPLE EASE	3-15-19	95 2.1	670	676/108 36	4.05	1324/115 60
<i>*12 year old mom still doing a good job. Nice calf.</i>								Disp: 5
33	98Y	[MJ MR TURTON P [121/JUSTICE 818	3-7-19	80 -0.5	585	546/88 21	3.33	1079/94 36
<i>*Cool-looking calf. Moderate frame and thick, with a low BW.</i>								Disp: 5+
34	9353	[PZC STETSON P [4108/WIND 016	3-30-19	94 1.5	640	656/105 25	3.22	1171/102 44
								Disp: 5
35	10/0	[PZC STETSON P [3R20/COPPERHEAD	4-15-19	96 1.7	725	801/128 34	3.67	1388/121 57
<i>*1/4 Red Angus. Super performance and disposition. Buckskin mom milks like a holstein.</i>								Disp: 5+
36	9386	[JAB ROLLER COASTER RIDE P [4244/COPPERHEAD	4-14-19	86 0.5	585	642/103 28	3.39	1184/103 43
								Disp: 5
37	90B	[OW MAXIMIZER 4044 P [696/BULLET	3-8-19	87 -1.9	590	588/94 26	3.11	1085/94 38
								Disp: 5



**Lot
27**



**Lot
32**



**Lot
41**



**Lot
46**

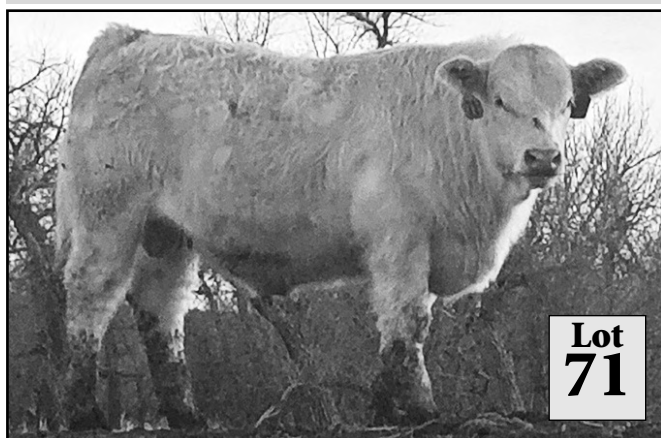
YEARLING BULLS

Lot	ID	Sire P/S/D Dam/Sire of Dam	BD	BW EPD	Act. WW 10-15-19	Adj. WW/Ratio EPD	100 Day ADG	Adj. YW/Ratio EPD
38	96B P	[MJ MR TURTON [9216/JUSTICE 504	3-10-19	90 0.6	610	611/98 23	3.39	1153/100 41
<i>*Neat-looking calf out of a good older cow.</i>								Disp: 5+
39	9A4 P	[MJ MR TURTON [4204/BULLET	3-16-19	104 1.8	595	577/92 21	3.73	1172/102 40
<i>*Goof calf, poor milking mother.</i>								Disp: 5
40	9369 P	[OW Maximizer 4044 [4490/COPPERHEAD	3-27-19	86 -1.8	655	663/106 28	1.05	831/73 29
<i>*Evidently this dude needs a magnet or something...</i>								Disp: 5
41	949 P	[WCR SIR MAC 447 [3145/BULLET	4-5-19	91 0.8	630	663/106 24	3.89	1285/112 39
								Disp: 5
42	9360 P	[OW MAXIMIZER 4044 [142/TRIPLE EASE	5-2-19	80 -2.4	485	580/93 24	4.33	1273/111 44
<i>*Young calf with one of the top gains!</i>								Disp: 4.5
43	9A2 P	[JAB ROLLER COASTER RIDE [132/Justice 503	3-15-19	78 -0.5	585	563/90 23	3.28	1087/95 39
<i>*1/8 Red Angus. Really nice calf, with a low BW.</i>								Disp: 5
44	907 P	[WCR SIR DUKE 479 [147/TRIPLE EASE	3-21-19	69 0.3	650	641/102 29	3.56	1209/105 49
<i>*1/4 Red Angus. Dark red factor calf with a super low BW.</i>								Disp: 4.5
45	9375 P	[WCR SIR DUKE 479 [108/ TRIPLE EASE	3-26-19	92 1.5	625	630/101 27	3.78	1234/107 48
								Disp: 5



YEARLING BULLS

Lot	ID	Sire P/S/D Dam/Sire of Dam	BD	BW EPD	Act. WW 10-15-19	Adj. WW/Ratio EPD	100 Day ADG	Adj. YW/Ratio EPD
46	86Y P	[BRCHE RAISING CANE [6275/REVELATION 120	2-26-19	90 0.7	620	592/95 29	3.95	1223/106 52
<i>*1st calf born in '19. 1/8 Angus, has a bit of a dark nose. Exc gain.</i>								Disp: 5
47	9291 P	[WCR SIR MAC 447 [4475/MAX 89	4-9-19	83 -0.3	570	611/98 20	3.27	1135/99 29
								Disp: 5
48	9189 P	[MC LM ALL IN [3116/BULLET	4-14-19	85 -0.9	570	625/100 28	3.22	1085/94 48
<i>*Little bit bigger version of this calf sells as lot 49. Very similar.</i>								Disp: 5
49	9A15 P	[MC LM ALL IN [4234/WIND 016	3-16-19	83 -1.3	650	629/101 30	3.78	1233/107 59
<i>*Appreciate this calf's low BW and solid performance, just good everywhere!</i>								Disp: 5
50	12/0 P	[JAB DAVID ALLEN COE [649/REVELATION 120	5-3-19	89 0.9	470	570/91 28	3.94	1201/104 53
<i>*Very young calf that's been growing out well!</i>								Disp: 5
51	934 P	[WCR SIR WYOMING WIND [6216/CC ZANE	4-8-19	82 -0.4	560	627/100 23	4.00	1267/110 44
<i>*Excellent gain.</i>								Disp: 5
52	9200 P	[MC LM ALL IN [3176/COPPERHEAD	4-3-19	83 -1.1	600	626/100 28	2.56	1034/90 40
								Disp: 5
53	939 P	[WCR SIR WYOMING WIND [6218/REVELATION 120	4-2-19	80 -0.8	525	576/92 21	4.05	1224/106 40
<i>*Really sharp calf. 3 year old mom did not milk wll. Excellent ADG made up for a lot.</i>								Disp: 4
54	9205 P	[WCR SIR WYOMING WIND [2R58/JUSTICE 504	4-10-19	90 0.9	605	652/104 28	4.06	1301/113 43
<i>*Exc gain on this soggy rascal.</i>								Disp: 5
55	908 P	[WCR SIR MAC 447 [7-10/BIG WIND	3-22-19	68 -1.8	580	605/97 20	3.55	1173/102 29
<i>*1/4 Red Angus with a super-low BW.</i>								Disp: 5
56	9363 P	[WCR SIR WYOMING WIND [8109/JUSTICE 503	4-18-19	89 0.8	615	718/114 28	2.94	1189/103 36
								Disp: 5
57	9185 P	[BRCHE RAISING CANE [5245/REVELATION 120	4-8-19	91 0.7	600	650/104 32	3.11	1147/100 51
								Disp: 5
58	929 P	[WCR SIR WYOMING WIND [607T/MC LM ALL IN	4-7-19	84 -0.4	550	614/98 21	3.45	1165/101 35
<i>*This calf's 3 year old mom doesn't milk real well. Check him out - he's pretty fancy!</i>								Disp: 5



YEARLING BULLS

Lot	ID	Sire P/S/D Dam/Sire of Dam	BD	BW EPD	Act. WW 10-15-19	Adj. WW/Ratio EPD	100 Day ADG	Adj. YW/Ratio EPD
59	9317 P	[OW MAXIMIZER 4044 [2R63/JUSTICE 503	4-24-19	80 -2.3	540	622/100 29	3.72	1217/105 47 Disp: 5
60	9359 P	[JAB ROLLER COASTER RIDE 4-4-19 [4474/MAX X89	4-4-19	89 0.4	615	645/103 24	3.50	1205/105 49 Disp: 5
61	9152 P	[WCR SIR IMPRESSIVE [111/JUSTICE 818	4-1-19	95 2.1	635	656/105 32	2.94	1127/98 52 Disp: 5
62	9230 P	[WCR SIR WYOMING WIND 4-30-19 [4234/JUSTICE 818	4-30-19	81 -0.3	475	561/90 19	3.84	1088/95 30 Disp: 5
<i>*Really cool looking calf. Young and good!</i>								
63	9293 P	[JRL MO MONEY [537/MAX 89	4-16-19	92 1.0	570	640/102 28	4.44	1350/117 60 Disp: 4
<i>*Excellent gain! Thick and good.</i>								
64	9325 P	[JAB DAVID ALLEN COE [6L6/ MC LM ALL IN	4-16-19	90 0.7	540	626/100 30	3.45	1177/102 49 Disp: 5
65	87Y P	[BRCHE RAISING CANE [6217/COPPERHEAD	3-1-19	87 -0.6	575	556/89 23	3.50	1116/97 41 Disp: 5
66	9216 D	[JRL MO MONEY [328/MAX 89	4-6-19	94 1.5	635	671/107 33	3.39	1213/105 56 Disp: 5
67	9324 P	[JRL MO MONEY [4267/WIND 016	4-26-19	88 0.9	550	638/102 27	3.00	1118/97 46 Disp: 5
68	928 P	[WCR SIR IMPRESSIVE [115/JUSTICE 504	4-2-19	96 2.2	610	633/101 33	2.89	1095/95 46 Disp: 5
69	2/0 P	[WCR SIR DUKE 479 [4282/REVELATION 120	3-28-19	92 1.3	630	641/103 29	3.55	1209/105 49 Disp: 4
70	9285 P	[MJ MR TURTON [6215/CC ZANE	4-30-19	88 -0.5	485	575/92 22	3.72	1170/102 43 Disp: 5



YEARLING BULLS

Lot	ID	Sire P/S/D Dam/Sire of Dam	BD	BW EPD	Act. WW 10-15-19	Adj. WW/Ratio EPD	100 Day Adj. YW/Ratio ADG	EPD
71	966	[JRL MO MONEY P [2B13/JUSTICE 504	4-20-19	89 0.5	515	580/93 27	3.78	1184/103 48 Disp: 5
72	9G12	[WCR SIR WYOMING WIND 3-18-19 P [6198/ALL IN		73 -1.8	560	581/93 18	2.95	1052/91 28 Disp: 5
		<i>*Super calving ease and has a real club-calf look to him. Really sharp.</i>						
73	947	[MC LM ALL IN P [686/WIND 016	4-10-19	81 -0.9	590	665/106 25	2.33	1038/90 36 Disp: 5
		<i>*Another nice calf on the lighter side of BW. Had a bug last fall, sure affected gain.</i>						
74	9111	[WCR SIR DUKE 479 D [2B13/JUSTICE 504	3-30-19	93 1.4	615	630/101 29	3.95	1261/110 50 Disp: 5
75	944	[JAB ROLLER COASTER RIDE 3-30-19 P [2R52/JUSTICE 406		96 1.6	670	687/110 32	3.95	1301/113 54 Disp: 5+
		<i>*Hair coat, quality, thickness and disposition. Super calf.</i>						
76	9235	[MJ MR TURTON P [532/MONTEZUMA	4-22-19	85 -0.1	545	630/101 23	3.28	1069/93 36 Disp: 5
77	9358	[COPPERHEAD P [7104/TRIPLE EASE	3-22-19	91 0.9	750	743/119 30	3.67	1329/116 47 Disp: 4.5
		<i>*One of my favorites! 12 year old mom still getting the job done!</i>						
78	84B	[JAB ROLLER COASTER RIDE 3-8-19 P [3102/COPPERHEAD		85 0.2	685	641/103 26	3.05	1129/98 40 Disp: 4.5
		<i>*Dang sure a nasty day when he was born!</i>						
79	9157	[JAB ROLLER COASTER RIDE 4-8-19 P [182/Justice 818		90 1.0	570	608/97 24	2.89	1070/93 32 Disp: 5
80	87B	[WELLS LINE OF FIRE P [2B30/RA	3-18-19	92 NA	635	620/99 NA	4.00	1260/110 NA Disp: 5
		<i>*1/2 Blood Bull. 1/2 RA. Good choice for some char-cross cows if you have some.</i>						
81	91B	[JAB ROLLER COASTER RIDE 3-10-19 P [165/JUSTICE 818		94 1.8	740	698/112 32	3.28	1222/106 55 Disp: 5+
		<i>*1/4 RA. Dark red factor, 3/4 char that is pretty darn good.</i>						
82	921	[CC ZANE P [787/JUSTICE 504	3-27-19	96 1.7	550	591/95 25	3.22	1106/96 40 Disp: 5
		<i>*This calf had a slow start out of an old cow but is really coming on.</i>						





FIRST CLASS MAIL
U.S. POSTAGE
PAID
PHILIP, SD
PERMIT NO. 20

17960 Base Line Road
Wasta, SD 57791

27th Annual
Charolais Bull Sale
Selling 75 yearling bulls
Tuesday, February 11, 2020
12:00 p.m. MT

