

DEERING'S CHEYENNE CHAROLAIS



28th Annual Ranch-Raised, Rancher-Approved Bull Sale

TUESDAY, FEBRUARY 9, 2021 • 12:00 P.M. MT

**Philip (SD) Livestock Auction
Selling 75 Yearling and 15 Two-Year-Old
Charolais Bulls**



2021 FEATURED SIRES

**TR Mr Outsider
PZC Stetson (Firewater)
BRCHE Raising Cane (Outsider)**

**OW Maximizer 4044
CC Zane 2342P
JAB Roller Coaster Ride**

- *Unconditional One Year Guarantee on Bull Purchases*
- *5% discount on 5-9 head*
- *10% discount on 10 or more head*
- *Free keep 'til May 1st*
- *Free Delivery*



www.CheyenneCharolais.com
Cheyenne Charolais

of Wasta, South Dakota
Joel Deering cell: 605-381-0885
Kandi Deering cell: 605-430-6260
jdiamond1969@yahoo.com

John Deering: 605-441-9600



www.CheyenneCharolais.com



Cheyenne Charolais

Joel Deering • (605) 381-0885

17960 Base Line Rd.

Wasta, SD 57791

jdiamond1969@yahoo.com

(e-mail checked daily)

Kandi Deering • (605) 430-6260

John Deering • (605) 441-9600

SALE DATE AND TIME: Tuesday, February 9, 2021 – 12:00 Noon (MT)

SALE LOCATION: Philip Livestock LLC • Philip, South Dakota

SALE DAY PHONE: (605) 859-2577 or register to bid online at: DVAuction
(must also register with sale barn -- www.philiplivestock.com)

AUCTIONEER: Lynn Weishaar • Reva, SD

SALE REPRESENTATIVES: Don Ravellette • (605) 859-2516, *RPI Promotions*

Dan Piroutek • Milesville, SD • (605) 544-3316, *Tristate Livestock News*

Ryan Casteel • (605) 423-6000, *Cattle Business Weekly*

TERMS & CONDITIONS

TERMS: Terms of the sale are cash or check payable to Philip Livestock Auction. All settlements must be made with the clerks of the sale before any cattle will be released.

BIDS: Every animal is to be sold and will be sold. No by-bidding is permitted. The highest bidder is the buyer.

ABSENTEE BIDS: If you cannot be with us on sale day, we will handle any bids in confidence. Please contact Cheyenne Charolais, the auctioneer, or any of the sale representatives.

DISPUTES: The auctioneer will have the right to settle any disputes that may arise and his decision in such matters is final.

ANNOUNCEMENTS: Errors discovered in the catalog will be corrected by announcements from the auction stand at sale time and such announcements will take precedence over printed material.

REGISTRATION CERTIFICATES: All bulls are eligible to be registered with the AICA.

BREEDER'S GUARANTEE: Our customers' satisfaction with our cattle is important to us; please call if problems of any kind occur with your purchase. **BULLS ARE GUARANTEED FOR 1 FULL YEAR!**

BREEDING GUARANTEE: 100%. Should a bull fail to pass a semen test, full credit or a replacement will be issued.

DEATH OR PERMANENT INJURY GUARANTEE: Purchase price, minus salvage value, prorate usage fee 'til injury.

HEALTH: Bulls have received all shots and boosters for blackleg, foot rot and respiratory diseases and have been poured and wormed.

VETERINARIAN: Dr. Jim McConaghy, Golden Veterinary Services, Wall, SD • (605) 279-2077

ACCIDENTS & LIABILITIES: All persons attend the sale at their own risk and neither Cheyenne Charolais, nor Philip Livestock assumes any liability in case of accident or loss of property.

MAIL BIDS: Bidders unable to be present may send their bids and instructions to Cheyenne Charolais, the auctioneer, or any of the sale representatives. Phone bids will be accepted on sale day: **(605) 859-2577**. Bidders may also pre-register to bid online at DVAUCTION!

DELIVERY: All bulls will be delivered free of charge after May 1.

***DISCOUNTS:** \$150 off per bull if you haul home sale day.

--- Volume discount 5% on 5, 6% on 6, 7% on 7, 8% on 8, 9% on 9, 10% on 10 or more.



Catalog produced by:

RPI Promotions

Don Ravellette • (605) 685-5147

Beau Ravellette • (605) 685-8155

P.O. Box 788 • Philip, South Dakota 57567

www.rpipromotions.com

Greetings fellow Charolais enthusiasts and welcome to our 2021 sale offering!

2020 is in the rear view now and it certainly had its' ups, downs, highs and lows. Everyone here at our outfit has dealt with the covid at some point and I seemed to get the worst of it. From early November till after Christmas I just couldn't shake it off well. I guess what they say is true... the "vid" is a bit tough on middle aged portly guys.

We lost 2 dear family members over the past year. My Aunt Pam Tinant of Arizona passed as well as my Uncle and "bull business" mentor Melvin Anderson. While these folks will be dearly missed, we also added 3 new family members. Grandbabies Kalon McGriff and Charlie Scott and new son-in-law Bryan Schofield who married my daughter Autumn in September.

Unlike 2019, we had an exceptionally dry 2020... about 7 inches total. Our alfalfa crop failed but unlike 2017 we've been able to purchase a good bit of the shortfall locally. Seems like we're either under water down here or can't catch a drop with no happy medium.

We're proud to bring you a great selection of bulls once again this year. The calves have been coming along well, but are still plenty "green" after kind of a tough summer for grass. We "browned up" about June 15th, which is still better than no green at all but the new grass sure turned brittle fast.

The bull calves are once again being developed on CHS bull challenger products and long stem hay, with the pelleted product being offered out of creep feeders for the 1st 2 months post-weaning and now hand fed in bunks. It's amazing how fast some bulls "come around" from a little bit of an attitude, once they find love for the bucket guy. We'll keep them on a fair ration after the sale to gain about 2.5 and you'll likely see about 2 to 300 pounds more bull at delivery.

The long aged bulls have been running out and have been fed hay and a little ear corn since mid-November. There's nothing too scientific about their feed program and their condition reflects that some. A supplement sheet will be posted sale day with their final weights, ADG and scrotal circumference. We will also take the big guys home till May if you need us to.



New grandson – Charlie Daniel

You'll find a ton of overall quality and eye appeal in this year's offering. For those of you who have bought bulls from this program for years, you know I select for a "type." That type is an eye-appealing, clean-jointed smoothly made herd bull, which is why I've focused a lot of my herd bull purchases on animals who have had a successful show career. A smoother made animal calves easier also in my opinion. We calve in big country sometimes and we simply don't pull calves out of mature cows unless something isn't coming right.

A big thanks to all our customers as this is truly a program built on your continued faith in our product. I sure hope we can help you find what you're looking for again. If you're new to our program, well — you won't need 10,000 dollars in your pocket to buy a good bull. Every bull that is of the age to fit this marketing window is in town with nothing held back for our own herd bull use. Whether it's your 28th year at our sale or your 1st, you'll find great value for your bull buying dollar.

Our producer of the year for 2021 is Bill Mraz who runs an outstanding cow-calf operation near Dupree, SD. He'll receive a \$2000 credit at this or any future sale and thanks again to the many past recipients of this award.

Thanks again to all who make this sale possible every year. We'll be happy to answer any questions you have and our numbers are listed. (we no longer have a "home" number.) If I'm not available Kandi or our new top hand John may be able to help or at least be able to find me.

Sincerely, Joel Deering and Family
Here's hoping for a great 2021!

Special Notes...

If distance, weather or other obligations prevent you from attending in person, please register with the sale barn (605-859-2577) and also with DV Auction to get approved for internet bidding. A lot of our customers have used this tool over the years and have been very happy with the bulls when delivered.

Reminders -

- Disposition scores
- \$150 off per bull if you haul home sale day.
- Volume discount 5% on 5, 6% on 6, 7% on 7, 8% on 8, 9% on 9, 10% on 10 or more.
- Bull Guarantee is for ANYTHING for one full year.



Kalon McKenna and
Grandpa

Past Producers of the Year:

| | |
|-------------|---|
| 2008 | Kieth Smith, Cottonwood |
| 2009 | Gary Snook, Midland |
| 2010 | Ross Williams, Philip |
| 2011 | Norval Millard, Presho |
| 2012 | Matt Brothers, Kenny & Stanley, Elm Springs |
| 2013 | Keith Reuer, Reliance |
| 2014 | Tim & Bob Peppel, St. Charles |
| 2015 | Chuck O'Connor, Philip |
| 2016 | Brady & Monte Schofield, Midland |
| 2017 | Grant Patterson, Kadoka |
| 2018 | Steve Thomas, Presho |
| 2019 | Lynn Fields, Elm Springs |
| 2020 | Leonard Andersen, Hayes |
| 2021 | Bill Mraz, Dupree |

REFERENCE SIRES



PZC STETSON 5008 ET

Reg. EM865215 Calved: 1-16-15 BW: 90

[THOMAS OAHE WIND 0772ET P
TR MR FIRE WATER 5792RET
EM704588 [THOMASSWISSERSWEET1764ET
[JWK IMPRESSIVE D040 ET
THOMAS MS IMPRESSIVE0641
F873178 [BCI MISS VERYLIMIT 6033P
[LT WYOMING WIND 4020 PLD
[THOMAS MS CAMELOT 5646
[LHD CIGAR E46
[THOMAS MS BONANZA 8698
[WCR SIR FA MAC 2244
[HBR LADY LIZ 721 P
[SKYMONT P UNLIMITED 0115
[BCR ROSE GIRL 0093

| | CE | BW | WW | YW | Milk | MCE | MTL | SC |
|-----|-----|-----|----|----|------|-----|-----|-----|
| EPD | 1.0 | 1.7 | 25 | 52 | 11 | 2.2 | 24 | 1.0 |
| Acc | PE | PE | PE | PE | PE | PE | PE | PE |
| %RK | 85 | 75 | 75 | 65 | 40 | 80 | 60 | 40 |

✓ Grand Champion at 2016 Black Hills Stock Show! Sires quiet, easy-fleshing bulls with superior eye appeal! I only wish we had more of his sons!



PZC STETSON 5008 ET



WCR SIR IMPRESSIVE 5171 P

Reg. M862676 Calved: 3-6-15 BW: 100 Adj WW: 758/104

[WCR SIR FA MAC 2244
JWK IMPRESSIVE D040 ET
M413653 [HBR LADY LIZ 721 P
[CFL NO QUESTION 732
WCR MS NO QUESTION 0187 P
F1123843 [WCR MS PAUL 5355 P
[WCR SIR FAB MAC 809
[WCR MISS CENTURY 920 TWN
[HBR IMPACT
[HBR LADY MACK 459 P
[EC NO DOUBT 2022 P
[VJ MS POLAROID 3203 P/S
[WCR SIR PAUL 9803 ET P
[WCR MISS DUKE 625 P

| | CE | BW | WW | YW | Milk | MCE | MTL | SC |
|-----|------|------|------|------|------|------|------|-----|
| EPD | 3.2 | 2.7 | 34 | 62 | 10 | 3.7 | 27 | 0.1 |
| Acc | 0.27 | 0.40 | 0.34 | 0.34 | 0.24 | 0.21 | 0.27 | PE |
| %RK | 75 | 90 | 45 | 45 | 55 | 70 | 50 | 100 |

✓ Deep-bodied, high performing sire with eye appeal!



OW MAXIMIZER 4044 PLD

Reg. M842125 Calved: 1-14-14 BW: 66 ADJ. WW: 676/108

[FC MAGIC WIND 0105 P
DC-OW MAXIMIZER 385PLD
M675875 [DC MISS JOSEY 0215 PLD
[WCR SIR PAUL 4377 ET P
OW MISS PAUL 2041 PLD
F1148821 [OW MISS SANDCREEK U 105
[LT WYOMING WIND 4020 PLD
[FUNKS MS HI MAGIC 704 P
[SCV JOE MONTANA
[PD MISS SENTINEL 5323PLD
[WCR SIR PAUL 9803 ET P
[WCR MISS SUPREME 452
[MC-OW SANDCREEK 375
[OW MISS ABSOLUTE S 070 PLD

| | CE | BW | WW | YW | Milk | MCE | MTL | SC |
|-----|------|------|------|------|------|------|------|------|
| EPD | 8.8 | -4.4 | 27 | 43 | 13 | 2.3 | 27 | 1.3 |
| Acc | 0.28 | 0.39 | 0.32 | 0.32 | 0.21 | 0.18 | 0.25 | 0.28 |
| %RK | 25 | 3 | 70 | 85 | 30 | 80 | 45 | 20 |

✓ This Oakwater bull is doing a tremendous job! Good hair, good growth & light BW's!



WCR SIR WYOMING WIND 5504 ET P

Reg. EM864098 Calved: 3-17-15 BW: 99 ADJ. WW: 736/100

[SCHURRTOP 5627
LT WYOMING WIND 4020 PLD
M411450 [LT CHAP'S LADY 2170P
[WCR SIR PAUL 9803 ET P
WCR MS PAUL 448 P
F1000589 [WCR MISS IMPRESS 2402ETP
[WCR SIR DUKE 783
[MISS SUGAR VALLEY 908
[LT UNLIMITED CHAPS 0109
[LT PRAIRIE MAIDEN 8095
[PAUL 109/9
[WCR MISS TRADITION 9612P
[JWK IMPRESSIVE D040 ET
[WCR MISS TRADITION 3472

| | CE | BW | WW | YW | Milk | MCE | MTL | SC |
|-----|-----|-----|----|----|------|-----|-----|-----|
| EPD | 4.5 | 0.4 | 27 | 46 | 3 | 5.3 | 16 | 0.7 |
| Acc | PE | PE | PE | PE | PE | PE | PE | PE |
| %RK | 60 | 50 | 70 | 75 | 85 | 55 | 90 | 70 |

✓ Big, long son of Wind from Wienk's. Sires high performing bulls with good dispositions and a little extra frame!



Brian and Autumn Schofield

REFERENCE SIRES

E JAB ROLLER COASTER RIDE 515 P

Reg. EM870536
BW: 80

Calved: 5-7-15
Adj. WW: 717/100

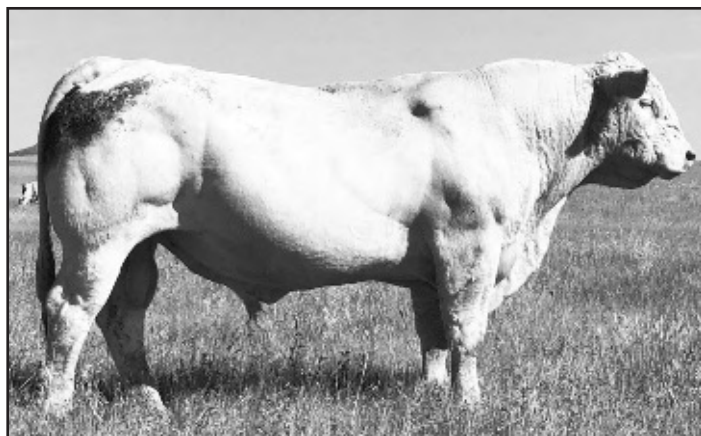
[LT ASSERTION 1277 P
LT BLUEGRASS 4017 P
M686569 [LT PEARL'S BREEZE 2236 P

[TR MR FIRE WATER 5792RET
JAB COTTON CANDY 001 POLLED
F1119733 [JAB ONE HOT MAMMA 399 P

[EATONS ASSERT 9171
[LT ALLI'S CLASS 9140 P
[LT WYOMING WIND 4020 PLD
[LT UNLIMITED PEARL 7053P
[THOMAS OAHE WIND 0772ET P
[THOMASSWISSERSWEET1764ET
[HTA WHITEHOT 105A
[EC SIERRA 018 PLD

| | CE | BW | WW | YW | Milk | MCE | MTL | SC |
|-----|-----|-----|----|----|------|-----|-----|-----|
| EPD | 4.1 | 1.3 | 26 | 51 | 9 | 7.8 | 22 | 1.1 |
| Acc | PE | PE | PE | PE | PE | PE | PE | PE |
| %RK | 65 | 65 | 75 | 70 | 55 | 30 | 75 | 40 |

✓ Very excited to present this bull's 1st sons! They're special!



JAB ROLLER COASTER RIDE 515 P

F CC ZANE 2342 PLD

Reg. M834810

Calved: 5-1-12

BW: 89

[TR MR FIRE WATER 5792RET
TR MR FIREWATER 0776X PLD
EM796097 [ALC KATE T07K

[LT WYOMING WIND 4020 PLD
THREE TREES ALICIA2342ET
F970984 [THREE TREES ALICIA308ET

[THOMAS OAHE WIND 0772ET P
[THOMASSWISSERSWEET1764ET
[BALDRIDGE FASTTRACK 82F
[DCR MISS CON 80
[SCHURRTOP 5627
[LT CHAP'S LADY 2170P
[WCR SIR T 2254
[RAC ALICIA 3089 POLLEDET

| | CE | BW | WW | YW | Milk | MCE | MTL | SC |
|-----|-----|-----|----|----|------|-----|-----|----|
| EPD | 3.7 | 1.3 | 26 | 45 | 2 | 6.9 | 15 | |
| Acc | PE | PE | PE | PE | PE | PE | PE | |
| %RK | 70 | 65 | 75 | 80 | 90 | 40 | 90 | |

✓ RES Champion BHSS 2014. Sires thickness, docility and eye appeal.

H MJ MR TURTON 703 PLD

Reg. EM897008

Calved: 2-6-17

BW: 86

[TR MR FIRE WATER 5792RET
TR PZC MR TURTON 0794 ET
EM790987 [THOMAS MS IMPRESSIVE0641

[CARDINALS PATRIOT C431
CARDINALS LADY G176 P
F105156 [CARDINALS LADY B275P

[THOMAS OAHE WIND 0772ET P
[THOMASSWISSERSWEET1764ET
[JWK IMPRESSIVE D040 ET
[BCI MISS VERYLIMIT 6033P
[LHD CIGAR E46
[BVF BABE 3803
[CARDINALS MAVERICK 9023P
[CARDINALS LADY 851

| | CE | BW | WW | YW | Milk | MCE | MTL | SC |
|-----|-----|-----|----|----|------|-----|-----|-----|
| EPD | 7.8 | 0.3 | 21 | 37 | 11 | 9.8 | 21 | 0.7 |
| Acc | PE | PE | PE | PE | PE | PE | PE | PE |
| %RK | 35 | 45 | 85 | 90 | 45 | 15 | 75 | 70 |

✓ This bull is fast becoming one of my favorites. "Beaver" sires above average everything. Several bulls in the sale to choose from.

G JAB DAVID ALLEN COE 511 PLD

Reg. M862131

Calved: 3-29-15

BW: 94

Adj WW: 783/100

[LT BLUEGRASS 4017 P
LT LEDGER 0332 P
M791626 [LT BRENDA 6120 PLD

[JAB CLIFFORD 577 PLD
JAB DARLING 226 PLD TW
F1163080 [JAB TOP JEWEL 008 PLD

[LT ASSERTION 1277 P
[LT PEARL'S BREEZE 2236 P
[LT RIO BRAVO 3181 P
[LT BRENDA'S EASE 3055PLD
[JWK IMPRESSIVE D040 ET
[JAB ONE HOT MAMMA 399 P
[JAB TOP SHELF 690 POLLED
[C-B MS HOTLINE 815

| | CE | BW | WW | YW | Milk | MCE | MTL | SC |
|-----|-----|------|----|----|------|-----|-----|-----|
| EPD | 6.1 | -0.2 | 30 | 57 | 2 | 4.7 | 16 | 1.2 |
| Acc | PE | PE | PE | PE | PE | PE | PE | PE |
| %RK | 50 | 40 | 60 | 55 | 90 | 60 | 90 | 35 |

✓ Lots of length and eye appeal. Sires very sound-structured bulls with a little extra frame.

Notes ...

REFERENCE SIREs



BRCHE RAISING CANE 7501 PLD

Reg. M892344

Calved: 1-7-17

[LT LONG DISTANCE 9001 PLD
M&M OUTSIDER 4003 PLD
M846631 [M&M MS CARBINE 1567 PLD

[TR SMOKEONTHEWATER ET
CC SMOKETTE 4076 ET P
EF1208175 [ALC KATE T07K

[LT SILVER DISTANCE 5342P
[LT BELLE 7026 P
[M&M RAPTOR 8122 PLD
[MS COOLEY JPOT 1107N9 ET

[THOMAS OAHE WIND 0772ET P
[THOMASSWISSERSWEET1764ET
[BALDRIDGE FASTTRACK 82F
[DCR MISS CON 80

| | CE | BW | WW | YW | Milk | MCE | MTL | SC |
|-----|------|------|------|------|------|------|------|------|
| EPD | 7.9 | -0.3 | 34 | 53 | 7 | 3.1 | 24 | 0.4 |
| Acc | 0.24 | 0.36 | 0.31 | 0.24 | 0.18 | 0.16 | 0.22 | 0.17 |
| %RK | 35 | 35 | 45 | 60 | 65 | 75 | 60 | 90 |

✓ Cane was Grand Champion at the 2018 BHSS. Extreme length, style and good structure in his sons.



TR DF MR GAME ON X56D ET PLD

Reg. EM886476

Calved: 3-10-16

BW: 78

Adj WW: 813/98

[TR PZC MR TURTON 0794 ET
ZKCC GAME ON 266Z
M820913 [MISS KEY TOREE 163S

[TR MR FIRE WATER 5792RET
TR PZC IMPRESSIVE LADY 0790ET
EF1121686 [THOMAS MS IMPRESSIVE0641

[TR MR FIRE WATER 5792RET
[THOMAS MS IMPRESSIVE0641
[KEYS MCHENRY 24M
[MISS KEY TOREE 169M

[THOMAS OAHE WIND 0772ET P
[THOMASSWISSERSWEET1764ET
[JWK IMPRESSIVE D040 ET
[BCI MISS VERYLIMIT 6033P

| | CE | BW | WW | YW | Milk | MCE | MTL | SC |
|-----|------|-----|----|----|------|-----|-----|-----|
| EPD | -0.3 | 1.8 | 29 | 56 | 9 | 4.4 | 23 | 1.1 |
| Acc | PE | PE | PE | PE | PE | PE | PE | PE |
| %RK | 90 | 80 | 60 | 55 | 60 | 65 | 65 | 35 |

✓ Excellent sire from the '17 Thomas sale that I'm really pleased with so far. Linebred Firewater-excellent eye appeal!



TR MR OUTSIDER 7789E ET

Reg. EM904464

Calved: 8-3-17

BW: 85

Adj WW: 705/100

[LT LONG DISTANCE 9001 PLD
M&M OUTSIDER 4003 PLD
M846631 [M&M MS CARBINE 1567 PLD

[LT WYOMING WIND 4020 PLD
TR MS WYOMING WIND 5604R
F1024831 [JES MS HI YIELD K31

[LT SILVER DISTANCE 5342P
[LT BELLE 7026 P
[M&M RAPTOR 8122 PLD
[MS COOLEY JPOT 1107N9 ET

[SCHURRTOP 5627
[LT CHAP'S LADY 2170P
[4-L UNLIMITED YL13POLLED
[JES MS ADVANTAGE D411

| | CE | BW | WW | YW | Milk | MCE | MTL | SC |
|-----|------|------|------|------|------|------|------|------|
| EPD | -1.1 | 1.8 | 29 | 47 | 6 | 2.2 | 21 | 0.5 |
| Acc | 0.27 | 0.41 | 0.36 | 0.30 | 0.22 | 0.21 | 0.27 | 0.19 |
| %RK | 95 | 80 | 65 | 75 | 70 | 80 | 75 | 85 |

✓ TR MR Outsider was the overall Supreme Row at the 2019 Black Hills Stock Show. His first calves have been moderate birth weight and very eye appealing.



JRL MO MONEY 1506 PLD

Reg. M864788

Calved: 1-24-15

BW: 98

Adj WW: 865/97

[LT BLUEGRASS 4017 P
LT LEDGER 0332 P
M791626 [LT BRENDA 6120 PLD

[WDZ NORTHERN WIND 8022 PLD ET
JRL Wdz HONOR 106 PLD
F1133541 [FINK PERFECTION 7743 248 GM ET

[LT ASSERTION 1277 P
[LT PEARL'S BREEZE 2236 P
[LT RIO BRAVO 3181 P
[LT BRENDA'S EASE 3055PLD

[LT WYOMING WIND 4020 PLD
[D&D MISS COVERGIRL
[M6 GRID MAKER 104 PET
[M6 MS E46'S DUKE 248 PET

| | CE | BW | WW | YW | Milk | MCE | MTL | SC |
|-----|------|------|------|------|------|------|------|-----|
| EPD | 4.8 | 1.2 | 31 | 62 | 6 | 6.6 | 22 | 1.5 |
| Acc | 0.26 | 0.37 | 0.29 | 0.21 | 0.21 | 0.19 | 0.24 | PE |
| %RK | 60 | 65 | 55 | 45 | 70 | 40 | 75 | 15 |

✓ "Mo" is becoming a good all-around sire of above average performance and rock solid range bulls. Probably our biggest mature herd sire. He's always been 100% sound and sires same.

Notes ...



DEERING'S
HEYENNE
HAROLAIS

Thanks for your interest in our program!

DISPOSITION SCORE

We are including this on every lot – disposition is a big priority and these scores are my own assessment from feeding by hand twice a day and working these bulls several times. Disposition also included in the guarantee!

- Scores 1 – Nuts
 2 – Wild and/or Mean/High-Headed
 3 – Average; Normally mild but could act up potentially in the chute or if handled rough
 4 – Above Average
 5 – Excellent; has never shown at any time, anything but “Happy Bull” behavior
 5+ Pet! Might need a stick to get him out of the way, likes to get a scratch now and then!

Definitely no “1” or “2”s in the sale!

YEARLING BULLS

| Lot | ID | Sire P/S/D Dam/Sire of Dam | BD | BW EPD | Act. WW 11-1-20 | Adj. WW/Ratio EPD | 100 Day ADG | Adj. YW/Ratio EPD |
|--|-----------|---|---------|------------|--------------------|----------------------|----------------|----------------------|
| 1 | 0201 P | [WCR SIR WYO WIND [2R52/JUSTICE 406 | 3-28-20 | 96 1.7 | 820 | 780/125 31 | 4.00 | 1420/123 46 |
| <i>*All about the grow! This calf really got it done on dry pasture!</i> | | | | | | | | Disp: 5 |
| 2 | 0374 P | [CC ZANE [524T/MC LM ALL IN | 4-9-20 | 98 1.5 | 730 | 730/117 30 | 4.66 | 1476/128 51 |
| <i>*Superior individual by an outstanding young cow that produced Lot 3 last year!</i> | | | | | | | | Disp: 5 |
| 3 | 0191 P | [RAISING CANE [7274/MAX 4044 | 4-3-20 | 91 -0.1 | 685 | 698/112 35 | 3.67 | 1285/112 53 |
| <i>*Big, friendly calf that will catch your eye!</i> | | | | | | | | Disp: 5 |
| 4 | 0488 P | [BULLET [6344/MONTEZUMA | 4-28-20 | 94 1.7 | 675 | 744/119 34 | 3.27 | 1267/110 40 |
| <i>*Length and volume, heck of a coat of hair!</i> | | | | | | | | Disp: 5 |
| 5 | 0053 P | [DAVID ALLEN COE [683/OLAF | 3-22-20 | 89 0.9 | 705 | 667/107 33 | 3.67 | 1254/109 53 |
| <i>*If I could pick a calf to keep for a herd sire, here he is!</i> | | | | | | | | Disp: 5 |
| 6 | 0483 P | [PZC STETSON [4204/BULLET | 4-25-20 | 95 1.2 | 685 | 728/116 35 | 3.07 | 1219/106 54 |
| <i>*Really cool looking calf with extra thickness!</i> | | | | | | | | Disp: 5 |
| 7 | 0275 P | [RAISING CANE [3R20/COPPERHEAD | 4-4-20 | 88 0.5 | 740 | 724/116 41 | 3.87 | 1343/117 62 |
| <i>*Very correct and high performance!</i> | | | | | | | | Disp: 5 |
| 8 | 0355 P | [MJ MR TURTON [696/BULLET | 4-12-20 | 87 0.5 | 620 | 638/106 26 | 3.60 | 1214/106 41 |
| <i>*Super thick, moderate frame and a real pet!</i> | | | | | | | | Disp: 5+ |
| 9 | 0154 P | [WCR SIR IMPRESSIVE [6155/REVELATION 120 | 4-5-20 | 93 1.4 | 630 | 629/99 30 | 4.27 | 1312/114 56 |



YEARLING BULLS

| Lot | ID P/S/D | Sire Dam/Sire of Dam | BD | BW EPD | Act. WW 11-1-20 | Adj. WW/Ratio EPD | 100 Day ADG | Adj. YW/Ratio EPD |
|-----|-------------|--|---------|------------|--------------------|----------------------|----------------|---------------------------|
| 10 | 0364 P | [PZC STETSON [477/BULLET | 4-23-20 | 90 0.9 | 685 | 729/117 28 | 3.87 | 1348/117 55 Disp: 5 |
| 11 | 0048 P | [CC MR BELVEDERE [5245/REVELATION 120 | 3-28-20 | 88 -0.1 | 650 | 619/99 23 | 3.73 | 1216/106 39 Disp: 5 |
| 12 | 0034 P | [ROLLER COASTER RIDE [4283/COPPERHEAD | 3-23-20 | 89 0.8 | 705 | 657/105 29 | 3.73 | 1254/109 49 Disp: 5 |
| 13 | 0107 P | [WCR SIR IMPRESSIVE [506/WCR SIR DUKE | 4-3-20 | 95 1.6 | 610 | 595/95 32 | 3.47 | 1150/100 48 Disp: 5 |



YEARLING BULLS

| Lot | ID P/S/D | Sire Dam/Sire of Dam | BD | BW EPD | Act. WW 11-1-20 | Adj. WW/Ratio EPD | 100 Day ADG | Adj. YW/Ratio EPD |
|-----|-------------|--|---------|------------|--------------------|----------------------|----------------|----------------------|
| 14 | 0024 | [CC MR BELVEDERE [115/JUSTICE 504 | 3-16-20 | 86 -0.5 | 670 | 609/97 21 | 3.87 | 1228/107 48 |
| | | | | | | | | Disp: 5 |
| 15 | 0063 P | [MJ MR TURTON [2B 109/WIND 016 | 3-26-20 | 89 0.5 | 630 | 595/95 24 | 3.33 | 1128/98 35 |
| | | | | | | | | Disp: 5 |
| 16 | 0398 P | [TR MR GAME ON [182/JUSTICE 818 | 4-17-20 | 94 1.9 | 650 | 672/108 33 | 3.33 | 1204/105 56 |
| | | | | | | | | Disp: 5 |
| 17 | 0493 P | [RAISING CANE [6217/COPPERHEAD | 4-23-20 | 96 0.9 | 655 | 705/113 35 | 3.27 | 1228/107 59 |
| | | | | | | | | Disp: 5 |
| | | <i>*This is a stud!</i> | | | | | | Disp: 5 |
| 18 | 0127 P | [WCR SIR DUKE [020/JUSTICE 503 | 4-4-20 | 89 1.6 | 625 | 642/103 31 | 3.53 | 1207/105 50 |
| | | | | | | | | Disp: 5+ |
| | | <i>*Good calf with an excellent disposition!</i> | | | | | | Disp: 5+ |
| 19 | 0032 P | [TR MR OUTSIDER [176/CIGAR 630 | 3-17-20 | 83 0.2 | 650 | 593/95 34 | 3.33 | 1125/98 49 |
| | | | | | | | | Disp: 5+ |
| 20 | 0061 P | [MJ MR TURTON [6314/COPPERHEAD | 3-26-20 | 88 0.1 | 680 | 652/104 27 | 3.60 | 1228/107 44 |
| | | | | | | | | Disp: 5 |
| 21 | 0446 P | [WCR SIR WYOMING WIND [668/MC LM ALL IN | 4-2-19 | 98 1.3 | 680 | 726/116 31 | 3.20 | 1238/108 43 |
| | | | | | | | | Disp: 5 |
| | | <i>*Big, long calf!</i> | | | | | | Disp: 5 |
| 22 | 0396 P | [BULLET [4170/REVELATION 120 | 4-20-20 | 93 0.9 | 675 | 708/113 31 | 3.00 | 1188/103 39 |
| | | | | | | | | Disp: 5 |



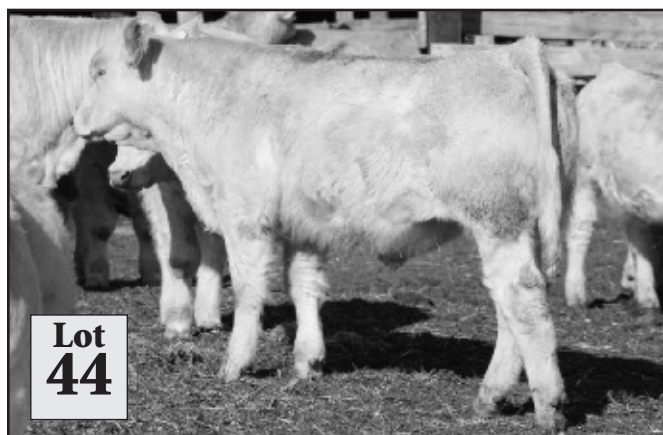
YEARLING BULLS

| Lot | ID P/S/D | Sire Dam/Sire of Dam | BD | BW EPD | Act. WW 11-1-20 | Adj. WW/Ratio EPD | 100 Day ADG | Adj. YW/Ratio EPD |
|---|-------------|---------------------------------------|---------|------------|--------------------|----------------------|----------------|-----------------------------------|
| 23 | 0470 P | [OW MAXIMIZER [2B98/JUSTICE 504 | 4-23-20 | 84 -2.3 | 640 | 681/109 29 | 3.47 | 1236/108 45 Disp: 4 |
| 24 | 0252 P | [TR MR OUTSIDER [7107/WIND 016 | 4-14-20 | 94 0.9 | 705 | 750/120 40 | 4.07 | 1401/122 61 Disp: 5 |
| <i>*Big numbers on this good calf!</i> | | | | | | | | |
| 25 | 0039 P | [BULLET [155/JUSTICE 818 | 3-26-20 | 97 1.4 | 690 | 652/104 29 | 4.13 | 1312/114 43 Disp: 5+ |
| <i>*Bigger framed, really friendly bull!</i> | | | | | | | | |
| 26 | 0022 P | [JRL MO MONEY [721/TRIPLE EASE | 3-15-20 | 90 1.1 | 575 | 522/84 26 | 3.67 | 1109/96 55 Disp: 5 |
| <i>*Eye-appealing calf!</i> | | | | | | | | |
| 27 | 0188 P | [TR MR GAME ON [328 MAXIMIZER X89 | 4-2-20 | 91 1.8 | 580 | 564/90 25 | 3.73 | 1161/101 48 Disp: 5 |
| 28 | 0341 P | [OW MAXIMIZER [7222 REVELATION 120 | 4-18-20 | 80 -2.9 | 645 | 671/107 30 | 3.93 | 1300/113 46 Disp: 5 |
| <i>*Lower BW, great growth!</i> | | | | | | | | |
| 29 | 0350 P | [RAISING CANE [755/CC ZANE | 4-19-20 | 92 0.7 | 650 | 708/113 40 | 3.87 | 1327/115 61 Disp: 5+ |
| <i>*Really thick, docile calf!</i> | | | | | | | | |
| 30 | 0291 P | [RAISING CANE [114/CIGAR 630 | 4-12-20 | 88 -0.1 | 640 | 648/104 38 | 3.93 | 1277/111 55 Disp: 4 |
| <i>*Really patterned after his sire! Good looking calf.</i> | | | | | | | | |
| 31 | 0050 P | [MJ MR TURTON [760/TRIPLE EASE | 3-27-20 | 90 0.8 | 575 | 581/96 22 | 3.60 | 1157/101 38 Disp: 5 |
| <i>*Good calf out of an older cow.</i> | | | | | | | | |



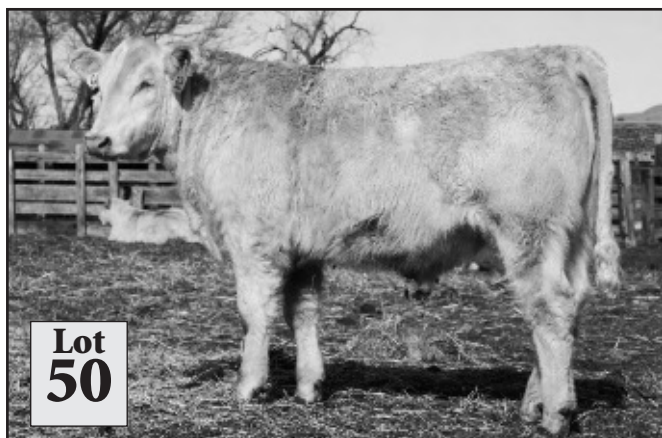
YEARLING BULLS

| Lot | ID | Sire P/S/D Dam/Sire of Dam | BD | BW EPD | Act. WW 11-1-20 | Adj. WW/Ratio EPD | 100 Day ADG | Adj. YW/Ratio EPD |
|--|-----------|---|---------|------------|--------------------|----------------------|----------------|----------------------|
| 32 | 0400 P | [WCR SIR DUKE [4G71/REVELATION 120 | 4-22-20 | 95 1.7 | 625 | 661/106 30 | 3.67 | 1248/109 49 |
| Disp: 5 | | | | | | | | |
| 33 | 0325 P | [TR MR GAME ON [740/CC BELVEDERE | 4-16-20 | 86 0.9 | 610 | 658/105 31 | 3.33 | 1191/104 46 |
| Disp: 5 | | | | | | | | |
| 34 | 0102 P | [MJ MR TURTON [8103/JUSTICE 503 | 3-29-20 | 85 0.2 | 605 | 609/97 26 | 3.67 | 1196/104 40 |
| Disp: 5 | | | | | | | | |
| 35 | 0159 P | [CC MR BELVEDERE [2B12/WIND 016 | 4-3-20 | 93 1.3 | 620 | 605/97 21 | 3.33 | 1138/99 33 |
| Disp: 5 | | | | | | | | |
| 36 | 56N P | [MJ MR TURTON [4108 WIND 016 | 4-20-20 | 91 0.9 | 580 | 608/97 22 | 3.87 | 1227/107 42 |
| <i>*Super-quiet, great hair and eye appeal!</i> | | | | | | | | |
| 37 | 0002 P | [OW MAXIMIZER [713RF/PZC STETSON | 3-14-20 | 76 -3.1 | 655 | 620/99 23 | 2.53 | 1025/89 32 |
| <i>*314 Good, low BW calf.</i> | | | | | | | | |
| 38 | 0220 P | [PZC STETSON [RED ANGUS 2R30 | 4-1-20 | 94 N/A | 730 | 706/113 N/A | 3.20 | 1218/106 N/A |
| <i>*This big guy is a half blood. Excellent choice for some char x cows.</i> | | | | | | | | |
| 39 | 0274 S | [ROLLER COASTER RIDE [165 JUSTICE 818 | 4-7-20 | 87 0.9 | 610 | 605/97 26 | 3.93 | 1234/107 52 |
| 40 | 0261 P | [TR MR OUTSIDER [7210/WCR SIR IMPRESSIVE | 4-5-20 | 74 -0.8 | 590 | 611/98 31 | 3.33 | 1144/99 46 |
| <i>*Small headed, medium bone and good-looking calf!</i> | | | | | | | | |
| 41 | 0381 P | [MJ MR TURTON [4475/MAX X89 | 4-19-20 | 88 0.2 | 600 | 626/100 21 | 3.27 | 1149/100 39 |
| 42 | 0379 P | [DAVID ALLEN COE [4497/MAX X89 | 4-18-20 | 90 1.0 | 565 | 586/94 29 | 3.73 | 1183/103 50 |
| 43 | 43N P | [TR MR GAME ON [144/CIGAR 406 | 4-27-20 | 88 1.3 | 560 | 605/97 25 | 3.07 | 1096/95 46 |
| Disp: 5 | | | | | | | | |
| 44 | 0407 P | [TR MR GAME ON [4490/COPPERHEAD | 4-24-20 | 90 1.0 | 600 | 640/101 28 | 3.07 | 1131/98 49 |
| Disp: 5 | | | | | | | | |



YEARLING BULLS

| Lot | ID | Sire P/S/D Dam/Sire of Dam | BD | BW EPD | Act. WW 11-1-20 | Adj. WW/Ratio EPD | 100 Day ADG | Adj. YW/Ratio EPD |
|---|-----------|--|---------|-----------|--------------------|----------------------|----------------|----------------------|
| 45 | 53N P | [WCR SIR WYOMING WIND 4-29-20 [532 MONTEZUMA | | 86 0.2 | 590 | 644/103 27 | 3.60 | 1220/106 44 |
| <i>*Long, tall pet with great hair!</i> | | | | | | | | |
| 46 | 0353 P | [PZC STETSON [318/COPPERHEAD | 4-20-20 | 96 1.6 | 570 | 597/96 23 | 4.27 | 1280/111 50 |
| <i>*Lots of growth!</i> | | | | | | | | |
| 47 | 0401 P | [WCR SIR DUKE [4204/BULLET | 4-22-20 | 89 1.0 | 525 | 554/89 23 | 3.53 | 1119/97 38 |
| <i>Disp: 5</i> | | | | | | | | |
| 48 | 0301 P | [PZC STETSON [2R35/JUSTICE 504 | 4-14-20 | 90 0.9 | 565 | 577/92 24 | 3.67 | 1164/101 44 |
| <i>Disp: 5</i> | | | | | | | | |
| 49 | 0184 P | [ROLLER COASTER RIDE 4-20-20 [7180/MAXIMIZER 4044 | | 87 0.3 | 610 | 623/100 24 | 3.93 | 1251/109 51 |
| <i>Disp: 5</i> | | | | | | | | |
| 50 | 0418 P | [WCR SIR IMPRESSIVE [6125/MAXIMIZER X89 | 4-26-20 | 93 1.9 | 620 | 677/108 36 | 3.93 | 1305/113 60 |
| <i>*Pretty dang good ratios here!</i> | | | | | | | | |
| 51 | 0300 P | [MJ MR TURTON [3102 COPPERHEAD | 4-12-20 | 86 0.2 | 565 | 572/92 21 | 3.27 | 1095/95 31 |
| <i>Disp: 5</i> | | | | | | | | |
| 52 | 0035 P | [WCR SIR IMPRESSIVE [121/JUSTICE 818 | 3-27-20 | 85 1.2 | 650 | 616/99 30 | 3.00 | 1096/95 51 |
| <i>*Awfully good!</i> | | | | | | | | |
| <i>Disp: 4</i> | | | | | | | | |



YEARLING BULLS

| Lot | ID | Sire P/S/D Dam/Sire of Dam | BD | BW EPD | Act. WW 11-1-20 | Adj. WW/Ratio EPD | 100 Day ADG | Adj. YW/Ratio EPD |
|---|-----------|---|---------|------------|--------------------|----------------------|----------------|----------------------------------|
| 53 | 0411 P | [DAVID ALLEN COE [3116/BULLET | 4-24-20 | 90 0.5 | 600 | 640/102 28 | 3.33 | 1173/102 48 Disp: 5 |
| 54 | 0462 P | [BULLET [4325/REVELATION 120 | 4-26-20 | 91 1.4 | 575 | 619/99 25 | 3.67 | 1206/105 42 Disp: 5 |
| 55 | 0480 P | [TR MR GAME ON [8107/EC BIG WIND | 4-26-20 | 95 2.1 | 630 | 708/113 33 | 4.00 | 1348/117 58 Disp: 4 |
| <i>*One good-looking son of a gun! He's just not crazy about being alone.</i> | | | | | | | | |
| 56 | 0042 P | [TR MR OUTSIDER [160/JUSTICE 818 | 3-28-20 | 86 0.3 | 675 | 643/103 33 | 3.00 | 1123/98 50 Disp: 5 |
| 57 | 0293 P | [RAISING CANE [690/SIR DUKE 330 | 4-9-20 | 88 0.3 | 600 | 610/98 30 | 3.60 | 1186/103 58 Disp: 5 |
| <i>*Excellent Cane son!</i> | | | | | | | | |
| 58 | 0062 P | [PZC STETSON [2643/WIND 016 | 3-25-20 | 96 1.3 | 610 | 575/92 23 | 3.60 | 1151/100 45 Disp: 5 |
| 59 | 40N P | [ROLLER COASTER RIDE [2G26/JUSTICE 818 | 4-16-20 | 91 0.9 | 665 | 685/110 27 | 3.80 | 1293/112 54 Disp: 3 |
| <i>*Heck of a good calf, just needs to calm down some.</i> | | | | | | | | |
| 60 | 0047 P | [TR MR OUTSIDER [8B124/JUSTICE 504 | 3-28-20 | 80 -1.0 | 570 | 578/92 30 | 3.07 | 1069/93 48 Disp: 5 |
| 61 | 0451 D | [MJ MR TURTON [7150/MAXIMIZER 4021 | 4-26-20 | 86 0.5 | 510 | 578/92 24 | 3.87 | 1197/104 39 Disp: 5 |
| <i>*Really cool looking calf. Lower BW and thick!</i> | | | | | | | | |
| 62 | 0287 P | [TR MR OUTSIDER [0-37/CIGAR 630 | 4-6-20 | 90 0.8 | 550 | 579/93 29 | 3.33 | 1112/97 40 Disp: 5 |
| 63 | 0210 D | [RAISING CANE [2B83/WIND 016 | 4-3-20 | 93 1.0 | 600 | 585/94 30 | 3.13 | 1085/94 52 Disp: 5 |
| 64 | 0016 P | [JRL MO MONEY [709/EC BIG WIND | 3-18-20 | 85 0.6 | 580 | 567/91 26 | 3.47 | 1122/98 43 Disp: 5 |
| <i>*Nice calf out of an older cow!</i> | | | | | | | | |
| 65 | 0051 D | [WCR SIR DUKE [122/CIGAR 406 | 3-26-20 | 92 1.3 | 600 | 568/91 24 | 3.20 | 1080/94 40 Disp: 4 |
| 66 | 0065 P | [ROLLER COASTER RIDE [RED ANGUS 561R | 3-29-20 | 81 NA | 605 | 578/92 NA | 3.93 | 1206/105 NA Disp: 5 |
| <i>*1/2 blood calf that's worth taking a look at if you have a few Char cross cows.</i> | | | | | | | | |
| 67 | 0467 P | [RAISING CANE [7116/MAX 4044 | 4-29-20 | 84 -0.7 | 605 | 661/106 36 | 3.07 | 1152/101 53 Disp: 4 |
| 68 | 0105 P | [CC ZANE [4296/BULLET | 4-4-20 | 90 1.0 | 560 | 548/88 20 | 3.27 | 1071/93 31 Disp: 5 |
| 69 | 0111 D | [OW MAXIMIZER [5118/WCR SIR DUKE 330 | 4-5-20 | 78 -2.9 | 600 | 590/95 21 | 2.80 | 1038/90 26 Disp: 5 |
| <i>*Good low BW calf!</i> | | | | | | | | |
| 70 | 0114 P | [2TM MAX 6A9 [596/REVELATION 120 | 4-8-20 | 80 -1.9 | 525 | 525/84 17 | 3.87 | 1144/99 23 Disp: 5 |
| <i>*His mom has squat for milk. Pretty decent, good gaining calf.</i> | | | | | | | | |

YEARLING BULLS

| Lot | ID | Sire P/S/D Dam/Sire of Dam | BD | BW EPD | Act. WW 11-1-20 | Adj. WW/Ratio EPD | 100 Day ADG | Adj. YW/Ratio EPD |
|--|------|--|---------|------------|--------------------|----------------------|----------------|----------------------|
| 71 | 0421 | [TR MR GAME ON P [1R52/JUSTICE 818 | 4-25-20 | 90 1.3 | 540 | 578/92 26 | 4.47 | 1293/112 53 |
| <i>*Excellent gain.</i> | | | | | | | | Disp: 3 |
| 72 | 0068 | [DAVID ALLEN COE P [5297/COPPERHEAD | 3-30-20 | 86 -0.1 | 605 | 581/93 26 | 3.93 | 1210/105 52 |
| <i>*Awfully good calf! Attitude is below average unfortunately.</i> | | | | | | | | Disp: 3 |
| 73 | 0209 | [JRL MO MONEY P/S [289/JUSTICE 818 | 4-11-20 | 95 1.5 | 670 | 676/108 33 | 4.13 | 1336/116 62 |
| <i>*Thick and good!</i> | | | | | | | | Disp: 5 |
| 74 | 0463 | [WCR SIR MAC P [7140/WCR SIR IMPRESSIVE | 4-30-20 | 75 -1.4 | 550 | 634/101 22 | 3.33 | 1167/101 30 |
| <i>*Should be very easy calving and have lots of vigor at birth.</i> | | | | | | | | Disp: 3 |
| 75 | 0284 | [RAISING CANE P [8-77B/CIGAR 406 | 4-15-20 | 85 -0.5 | 655 | 702/108 39 | 4.20 | 1374/119 65 |
| <i>*One of the best in the offering!</i> | | | | | | | | Disp: 5 |



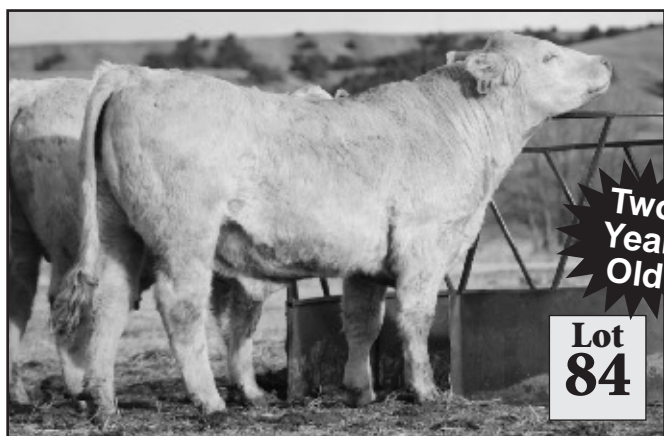
This is a nice group of aged bulls... mostly late-aged 2019 bulls and 2 fall 2018 bulls. They're not fat and will be ready for heavy use. Some of these bulls were leased last summer and it will be noted. They sell semen tested and will have passed a trichomoniasis test also. A supplement sheet will be available sale day with current weights and ADG, as well as scrotal circumference.

2 year olds

| Lot | ID | Sire P/S/D Dam/Sire of Dam | BD | BW EPD | Adj. WW EPD | YW/Ratio EPD |
|---|------|---|---------|------------|----------------|-----------------|
| 76 | 955 | [P2C STETSON P [162/CIGAR 406 | 5-14-19 | 90 0.9 | 654 36 | NA 50 |
| <i>*Just a big, long range bull I think you'll like. O'Connor Ranch 2020.</i> | | | | | | Disp: 5 |
| 77 | 9300 | [2H TLC COPPERHEAD P [1R91/TRIPLE EASE | 6-3-19 | 88 0.6 | 629 24 | NA 46 |
| <i>*Pretty good bull... they could all be fatter! Baxter Anders 2020.</i> | | | | | | Disp: 5 |
| 78 | 87Y | [REVELATION 120 D [674/INFINITE WIND | 7-25-18 | 84 -2.1 | 685 26 | NA 35 |
| <i>*Long-aged bull that sure looks like his dad. Baxter Anders 2020.</i> | | | | | | Disp: 5 |
| 79 | 9340 | [CC MR BELVEDERE P [101/TRIPLE EASE | 6-9-19 | 87 -0.1 | 639 24 | NA 34 |
| <i>*Long, quiet bull. Baxter Anders 2020.</i> | | | | | | Disp: 5 |

2 year olds

| Lot | ID | Sire P/S/D Dam/Sire of Dam | BD | BW EPD | Adj. WW EPD | YW/Ratio EPD |
|---|------|--|---------|------------|----------------|-----------------|
| 80 | 9369 | [OW MAXIMIZER 4044 P [4490/COPPERHEAD | 3-27-19 | 86 -1.8 | 663 28 | NA 29 |
| <i>*This calf got sick post-weaning in '19 and didn't make it to Philip in '20. Good, long bull.</i> | | | | | | Disp: 5 |
| 81 | 962 | [P2C STETSON P [4250/WIND 016 | 5-9-19 | 88 0.3 | 646 33 | NA 49 |
| <i>*Dang good bull. Easy enough to handle, don't like to be alone. O'Connor Ranch 2020.</i> | | | | | | Disp: 4 |
| 82 | 9374 | [WCR SIR IMPRESSIVE P [5300 REVELATION 120 | 5-5-19 | 91 1.5 | 680 35 | NA 55 |
| <i>*Long, good bull. Baxter Anders 2020.</i> | | | | | | Disp: 5 |
| 83 | 812 | [CC MR BELVEDERE P [9119/CIGAR 406 | 3-4-18 | 78 -1.6 | 575 22 | NA 38 |
| <i>*This thick little dude is cool! Raised on a bottle; finally saw action at Baxter Anders 2020.</i> | | | | | | Disp: 5+ |
| 84 | 938 | [MC LM ALL IN P [6300/SIR DUKE 330 | 5-5-19 | 82 -1.0 | 701 35 | NA 60 |
| <i>*Just a little short aged of making the sale last year. Dang good. Rod Anders 2020.</i> | | | | | | Disp: 4 |
| 85 | 937 | [DAVID ALLEN COE P [5125/COPPERHEAD | 4-6-19 | 103 2.3 | 697 36 | NA 62 |
| <i>*Was Lot 12 in last year's sale, came in on the fight and "no-saled". Fine to handle now. Rod Anders 2020.</i> | | | | | | Disp: 5 |
| 86 | 9311 | [WCR SIR WYOMING WIND P [4201/MAXIMIZER X89 | 5-20-19 | 86 -0.5 | 710 28 | NA 46 |
| <i>*Good looking bull with a neat, small head. Rod Anders 2020.</i> | | | | | | Disp: 5 |
| 87 | 9170 | [P2C STETSON P [2B89/JUSTICE 818 | 4-15-19 | 90 1.0 | 577 24 | NA 43 |
| <i>*Lot 14 last year's sale. He was a "no-sale" but way better bull than his WW indicates.</i> | | | | | | Disp: 5+ |
| 88 | 9352 | [WCR SIR DUKE P [191/TRIPLE EASE | 6-14-19 | 83 0.8 | 595 30 | NA 40 |
| <i>*Good, lower BW bull. Baxter Anders 2020.</i> | | | | | | Disp: 5 |
| 89 | 9174 | [P2C STETSON P [120/JUSTICE 503 | 5-12-19 | 91 0.9 | 621 26 | NA 39 |
| <i>*This calf is pretty lean and green but he's sure good. Baxter Anders 2020.</i> | | | | | | Disp: 5+ |
| 90 | 921 | [CC ZANE D [787/JUSTICE 504 | 3-27-19 | 96 1.7 | 595 25 | NA 40 |
| <i>*Lot 82 in 2020 sale. Good calf - thick, gentle, and long. Baxter Anders 2020.</i> | | | | | | Disp: 5+ |
| 91 | 9227 | [WCR SIR MAC 447 S [4017/WIND 016 | 5-1-19 | 72 -2.0 | 562 17 | NA 28 |
| <i>*"Stubbsy Jr." If you're looking for a good calving ease bull, this guy is ready.</i> | | | | | | Disp: 5+ |





FIRST CLASS MAIL
U.S. POSTAGE
PAID
PHILIP, SD
PERMIT NO. 20

17960 Base Line Road
Wasta, SD 57791



28th Annual
Charolais Bull Sale
Selling 75 Yearling Charolais Bulls
and 15 Two-Year-Olds
Tuesday, February 9, 2021
12:00 p.m. MT

