



29th Annual Ranch-Raised, Rancher-Approved Bull Sale

TUESDAY, FEBRUARY 8, 2022 2:00 P.M. MST

**Philip (SD) Livestock Auction
Selling 70 Yearling and 20 Two-Year-Old
Charolais Bulls**



- **Unconditional One Year Guarantee on Bull Purchases**
- **5% discount on 5-9 head**
- **10% discount on 10 or more head**
- **Free keep 'til May 1st**
- **Free Delivery**



www.CheyenneCharolais.com
f Cheyenne Charolais

of Wasta, South Dakota
Joel Deering cell: 605-381-0885
Kandi Deering cell: 605-430-6260
jdiamond1969@yahoo.com

John Deering: 605-441-9600



www.cheyennecharolais.com



Cheyenne Charolais

Joel Deering -- (605) 381-0885

17960 Base Line Rd.

Wasta, SD 57791

jdiamond1969@yahoo.com

(email checked daily)

Kandi Deering -- (605) 430-6260

John Deering -- (605) 441-9600

SALE DATE AND TIME: Tuesday, February 8, 2022 -- 2:00 PM (MST)

SALE LOCATION: Philip Livestock LLC -- Philip, South Dakota

SALE DAY PHONE: (605) 859-2577 or register to bid online at: DVAuction

(must also register with sale barn -- www.philiplivestock.com)

AUCTIONEER: Lynn Weisharr -- Reva, SD

SALE REPRESENTATIVES: Don Ravellette -- (605) 859-2516, RPI Promotions

Dan Piroutek -- (605) 544-3316, Tristate Livestock News

Ryan Casteel -- (605) 423-6000, Cattle Business Weekly

TERMS & CONDITIONS

TERMS: Terms of the sale are cash or check payable to Philip Livestock Auction. All settlements must be made with the clerks of the sale before any cattle will be released.

BIDS: Every animal is to be sold and will be sold. No by-bidding is permitted. The highest bidder is the buyer.

ABSENTEE BIDS: If you cannot be with us on sale day, we will handle any bids in confidence. Please contact Cheyenne Charolais, the auctioneer, or any of the sale representatives.

DISPUTES: The auctioneer will have the right to settle any disputes that may arise and his decision in such matters is final.

ANNOUNCEMENTS: Errors discovered in the catalog will be corrected by announcements from the auction stand at sale time and such announcements will take precedence over printed material.

REGISTRATION CERTIFICATES: All bulls are eligible to be registered with the AICA.

BREEDER'S GUARANTEE: Our customers' satisfaction with our cattle is important to us; please call if problems of any kind occur with your purchase. BULLS ARE GUARANTEED FOR 1 FULL YEAR!

BREEDING GUARANTEE: 100%. Should a bull fail to pass a semen test, full credit or a replacement will be issued.

DEATH OR PERMANENT INJURY GUARANTEE: Purchase price, minus salvage value, prorated usage fee 'til injury.

HEALTH: Bulls have received all shots and boosters for blackleg, foot rot and respiratory diseases and have been poured and wormed.

VETERINARIAN: Dr. Jim McConaghy, Badlands Veterinary Services, Wall, SD--(605) 279-2077

ACCIDENTS & LIABILITIES: All persons attend the sale at their own risk. Neither Cheyenne Charolais, nor Philip Livestock assumes any liability in case of accident or loss of property.

MAIL IN BIDS: Bidders unable to be present may send their bids and instructions to Cheyenne Charolais, the auctioneer, or any of the sales representatives. Phone bids will be accepted on sale day: **(605)859-2577**. Bidders may also pre-register to bid online at **DVAuction.com**.

DELIVERY: All bulls will be delivered free of charge after May 1.

***DISCOUNTS:** \$150 off per bull if you haul them home on sale day.

5% discount on 5 to 9 head

10% discount on 10 or more head

Welcome fellow Charolais fans!

We hope 2022 finds everyone healthy and hopeful for continued improvement in our cattle markets!

We had some major issues with our DNA lab that processes our sire parentage, as they also do covid testing for hospitals and clinics and got backed up on their other work. The result--we received that report on February 4--which has given us little time to get our info on the bulls to you in an even close to timely manner.

If you are reading this, you are either at the sale or it is the final few days before and you are anxious to get through the information and/or the pens of bulls, so I will not be my usual windy self.

The bulls look and performed well. We usually creep feed at least some during the summer, but because of cost, chose not to even with little grass. The calves came in this fall in surprisingly good shape and have continued to do very well on a ration of CHS bull challenger and free choice milo and oats long stem hay. 2 year old bulls have had grainless silage since last fall and some ear corn along with hay and silage since mid-December. This is our 2nd year without a hay crop of any kind here and we are grateful to the suppliers, truckers and bankers who have helped keep our cattle fed and happy!

Thanks to everyone who has purchased bulls from us in the past and we truly owe you everything for our continued success. We will keep trying to improve every year and hope you will be able to view this year's set of bulls as a great example of our commitment to supplying quality bulls that will go out and do well for you.

I'm pleased to announce Haven Stuck of Rapid City as the recipient of a \$2000 credit as our producer of the year for 2022. He and his daughter Taylor run cattle near New Underwood and sell a great set of heavy calves every Fall.

Thank you all and it sounds like the weather is going to cooperate Tuesday!

Sincerely—Joel, Kandi, John and Sheridan Deering



Old homestead shack on the ranch

Past Producers of the Year:

2008	Kieth Smith -- Cottonwood, SD
2009	Gary Snook -- Midland, SD
2010	Ross Williams -- Philip, SD
2011	Norval Millard -- Presho, SD
2012	Matt Brothers - Kenny & Stanley Elm Springs, SD
2013	Keith Reuer -- Reliance, SD
2014	Tim & Bob Peppel -- St. Charles, SD
2015	Chuck O'Connor -- Philip, SD
2016	Brady & Monte Schofield -- Midland, SD
2017	Grant Patterson -- Kadoka, SD
2018	Steve Thomas -- Presho, SD
2019	Lynn Fields -- Elm Springs, SD
2020	Leonard Andersen -- Hayes, SD
2021	Bill Mraz -- Dupree, SD
2022	Haven Stuck -- New Underwood, SD

REFERENCE SIRES



PZC STETSON 5008 ET

Reg. EM865215 Calved: 1-16-15 BW: 90

[THOMAS OAHE WIND 0772ET P
TR MR FIRE WATER 5792RET
EM704588 [THOMASSWISSERSWEET1764ET
[LT WYOMING WIND 4020 PLD
[THOMAS MS CAMELOT 5646
[LHD CIGAR E46
[THOMAS MS BONANZA 8698

[JWK IMPRESSIVE D040 ET
THOMAS MS IMPRESSIVE0641
F873178 [BCI MISS VERYLIMIT 6033P
[WCR SIR FA MAC 2244
[HBR LADY LIZ 721 P
[SKYMONT P UNLIMITED 0115
[BCR ROSE GIRL 0093

	CE	BW	WW	YW	Milk	MCE	MTL	SC
EPD	1.7	1.1	47	93	24	2.7	47	0.9
Acc	PE	PE	PE	PE	PE	PE	PE	PE
%RK	85	75	85	75	45	80	70	50

✓ Grand Champion at 2016 Black Hills Stock Show! Sires quiet, easy-fleshing bulls with superior eye appeal! I only wish we had more of his sons!



PZC STETSON 5008 ET



WCR SIR IMPRESSIVE 5171 P

Reg. M862676 Calved: 3-6-15 BW: 100 Adj WW: 758/104

[WCR SIR FA MAC 2244
JWK IMPRESSIVE D040 ET
M413653 [HBR LADY LIZ 721 P
[WCR SIR FAB MAC 809
[WCR MISS CENTURY 920 TWN
[HBR IMPACT
[HBR LADY MACK 459 P

[CFL NO QUESTION 732
WCR MS NO QUESTION 0187 P
F1123843 [WCR MS PAUL 5355 P
[EC NO DOUBT 2022 P
[VJ MS POLAROID 3203 P/S
[WCR SIR PAUL 9803 ET P
[WCR MISS DUKE 625 P

	CE	BW	WW	YW	Milk	MCE	MTL	SC
EPD	2.9	2.0	59	107	21	1.5	51	0.1
Acc	0.27	0.39	0.30	0.32	0.24	0.21	0.26	PE
%RK	75	90	45	45	60	85	55	100

✓ Deep-bodied, high performing sire with eye appeal!



OW MAXIMIZER 4044 PLD

Reg. M842125 Calved: 1-14-14 BW: 66 ADJ. WW: 676/108

[FC MAGIC WIND 0105 P
DC-OW MAXIMIZER 385PLD
M675875 [DC MISS JOSEY 0215 PLD
[LT WYOMING WIND 4020 PLD
[FUNKS MS HI MAGIC 704 P
[SCV JOE MONTANA
[PD MISS SENTINEL 5323PLD

[WCR SIR PAUL 4377 ET P
OW MISS PAUL 2041 PLD
F1148821 [OW MISS SANDCREEK U 105
[WCR SIR PAUL 9803 ET P
[WCR MISS SUPREME 452
[MC-OW SANDCREEK 375
[OW MISS ABSOLUTE S 070 PLD

	CE	BW	WW	YW	Milk	MCE	MTL	SC
EPD	9.7	-5.0	55	89	24	1.3	51	1.3
Acc	0.28	0.38	0.28	0.30	0.20	0.18	0.23	0.28
%RK	25	4	60	80	40	90	50	20

✓ This Oakwater bull is doing a tremendous job! Good hair, good growth & light BW's!



WCR SIR WYOMING WIND 5504 ET P

Reg. EM864098 Calved: 3-17-15 BW: 99 ADJ. WW: 736/100

[SCHURRTOP 5627
LT WYOMING WIND 4020 PLD
M411450 [LT CHAP'S LADY 2170P

[WCR SIR PAUL 9803 ET P
WCR MS PAUL 448 P
F1000589 [WCR MISS IMPRESS 2402ETP

[WCR SIR DUKE 783
[MISS SUGAR VALLEY 908
[LT UNLIMITED CHAPS 0109
[LT PRAIRIE MAIDEN 8095
[PAUL 109/9
[WCR MISS TRADITION 9612P
[JWK IMPRESSIVE D040 ET
[WCR MISS TRADITION 3472

	CE	BW	WW	YW	Milk	MCE	MTL	SC
EPD	4.7	0.2	51	91	14	5.6	39	0.7
Acc	PE	PE	PE	PE	PE	PE	PE	PE
%RK	65	60	75	80	90	55	90	70

✓ Big, long son of Wind from Wienk's. Sires high performing bulls with good dispositions and a little extra frame!

Notes ...

REFERENCE SIREs

E E JAB ROLLER COASTER RIDE 515 P

Reg. EM870536
BW: 80

Calved: 5-7-15
Adj. WW: 717/100

[LT ASSERTION 1277 P
LT BLUEGRASS 4017 P
M686569 [LT PEARL'S BREEZE 2236 P

[EATONS ASSERT 9171
[LT ALLI'S CLASS 9140 P
[LT WYOMING WIND 4020 PLD
[LT UNLIMITED PEARL 7053P

[TR MR FIRE WATER 5792RET
JAB COTTON CANDY 001 POLLED
F1119733 [JAB ONE HOT MAMMA 399 P

[THOMAS OAHE WIND 0772ET P
[THOMASSWISSERSWEET1764ET
[HTA WHITEHOT 105A
[EC SIERRA 018 PLD

	CE	BW	WW	YW	Milk	MCE	MTL	SC
EPD	4.8	0.5	46	85	19	8.0	42	0.9
Acc	PE	PE	PE	PE	PE	PE	PE	PE
%RK	65	65	90	85	70	30	85	50

✓ *Very excited to present this bull's sons! They're special!*



JAB ROLLER COASTER RIDE 515 P

E F CC ZANE 2342 PLD

Reg. M834810

Calved: 5-1-12

BW: 89

[TR MR FIRE WATER 5792RET
TR MR FIREWATER 0776X PLD
EM796097 [ALC KATE T07K

[THOMAS OAHE WIND 0772ET P
[THOMASSWISSERSWEET1764ET
[BALDRIDGE FASTTRACK 82F
[DCR MISS CON 80

[LT WYOMING WIND 4020 PLD
THREE TREES ALICIA2342ET
F970984 [THREE TREES ALICIA308ET

[SCHURRTOP 5627
[LT CHAP'S LADY 2170P
[WCR SIR T 2254
[RAC ALICIA 3089 POLLEDET

	CE	BW	WW	YW	Milk	MCE	MTL	SC
EPD	3.5	0.9	49	90	13	7.2	38	
Acc	PE	PE	PE	PE	PE	PE	PE	
%RK	75	75	80	80	95	35	95	

✓ *RES Champion BHSS 2014. Sires thickness, docility and eye appeal.*

E G JAB DAVID ALLEN COE 511 PLD

Reg. M862131

Calved: 3-29-15

BW: 94

Adj WW: 783/100

[LT BLUEGRASS 4017 P
LT LEDGER 0332 P
M791626 [LT BRENDA 6120 PLD

[LT ASSERTION 1277 P
[LT PEARL'S BREEZE 2236 P
[LT RIO BRAVO 3181 P
[LT BRENDA'S EASE 3055PLD

[JAB CLIFFORD 577 PLD
JAB DARLING 226 PLD TW
F1163080 [JAB TOP JEWEL 008 PLD

[JWK IMPRESSIVE D040 ET
[JAB ONE HOT MAMMA 399 P
[JAB TOP SHELF 690 POLLED
[C-B MS HOTLINE 815

	CE	BW	WW	YW	Milk	MCE	MTL	SC
EPD	6.5	-0.8	54	100	12	4.6	38	1.2
Acc	PE	PE	PE	PE	PE	PE	PE	PE
%RK	50	40	65	60	95	65	95	35

✓ *Lots of length and eye appeal. Sires very sound-structured bulls with a little extra frame.*

E H MJ MR TURTON 703 PLD

Reg. EM897008

Calved: 2-6-17

BW: 86

[TR MR FIRE WATER 5792RET
TR PZC MR TURTON 0794 ET
EM790987 [THOMAS MS IMPRESSIVE0641

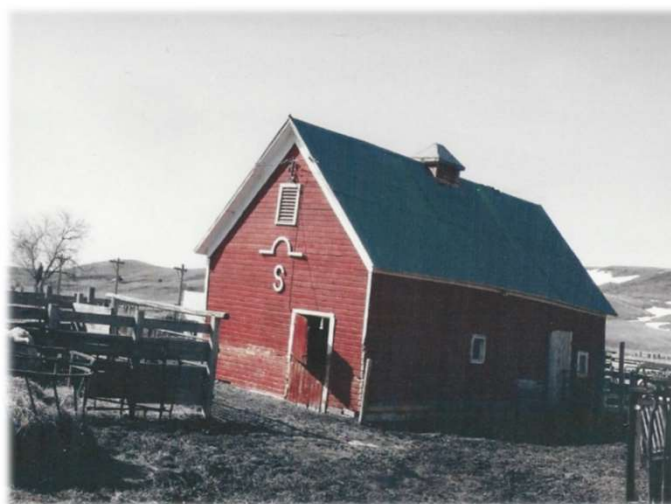
[THOMAS OAHE WIND 0772ET P
[THOMASSWISSERSWEET1764ET
[JWK IMPRESSIVE D040 ET
[BCI MISS VERYLIMIT 6033P

[CARDINALS PATRIOT C431
CARDINALS LADY G176 P
F1055156 [CARDINALS LADY B275P

[LHD CIGAR E46
[BVF BABE 3803
[CARDINALS MAVERICK 9023P
[CARDINALS LADY 851

	CE	BW	WW	YW	Milk	MCE	MTL	SC
EPD	7.7	-0.2	45	80	22	9.8	44	0.6
Acc	PE	PE	PE	PE	PE	PE	PE	PE
%RK	40	50	90	90	55	15	80	80

✓ *This bull is fast becoming one of my favorites. "Beaver" sires above average everything. Several bulls in the sale to choose from.*



This beautiful 1906 barn stood for 106 years on the ranch.

REFERENCE SIREs



BRCHE RAISING CANE 7501 PLD

Reg. M892344

Calved: 1-7-17

[LT LONG DISTANCE 9001 PLD
M&M OUTSIDER 4003 PLD
M846631 [M&M MS CARBINE 1567 PLD

[TR SMOKEONTHEWATER ET
CC SMOKETTE 4076 ET P
EF1208175 [ALC KATE T07K

[LT SILVER DISTANCE 5342P
[LT BELLE 7026 P
[M&M RAPTOR 8122 PLD
[MS COOLEY JPOT 1107N9 ET
[THOMAS OAHE WIND 0772ET P
[THOMASWISSERSWEET1764ET
[BALDRIDGE FASTTRACK 82F
[DCR MISS CON 80

	CE	BW	WW	YW	Milk	MCE	MTL	SC
EPD								
Acc								
%RK								

✓ Cane was Grand Champion at the 2018 BHSS. Extreme length, style and good structure in his sons.



TR MR OUTSIDER 7789E ET

Reg. EM904464

Calved: 8-3-17

BW: 85

Adj WW: 705/100

[LT LONG DISTANCE 9001 PLD
M&M OUTSIDER 4003 PLD
M846631 [M&M MS CARBINE 1567 PLD

[LT WYOMING WIND 4020 PLD
TR MS WYOMING WIND 5604R
F1024831 [JES MS HI YIELD K31

[LT SILVER DISTANCE 5342P
[LT BELLE 7026 P
[M&M RAPTOR 8122 PLD
[MS COOLEY JPOT 1107N9 ET
[SCHURRTOP 5627
[LT CHAP'S LADY 2170P
[4-L UNLIMITED YL13POLLED
[JES MS ADVANTAGE D411

	CE	BW	WW	YW	Milk	MCE	MTL	SC
EPD	1.0	0.6	50	86	20	3.9	4.5	0.4
Acc	0.27	0.40	0.34	0.28	0.24	0.23	0.27	0.21
%RK	85	65	80	85	65	70	75	85

✓ TR MR Outsider was the overall Supreme Row Champion at the 2019 BHSS. His calves have been moderate birthweight and very eye appealing.



TR DF MR GAME ON X56D ET PLD

Reg. EM886476

Calved: 3-10-16

BW: 78

Adj WW: 813/98

[TR PZC MR TURTON 0794 ET
ZKCC GAME ON 266Z
M820913 [MISS KEY TOREE 163S

[TR MR FIRE WATER 5792RET
TR PZC IMPRESSIVE LADY 0790ET
EF1121686 [THOMAS MS IMPRESSIVE0641

[TR MR FIRE WATER 5792RET
[THOMAS MS IMPRESSIVE0641
[KEYS MCHENRY 24M
[MISS KEY TOREE 169M

[THOMAS OAHE WIND 0772ET P
[THOMASWISSERSWEET1764ET
[JWK IMPRESSIVE D040 ET
[BCI MISS VERYLIMIT 6033P

	CE	BW	WW	YW	Milk	MCE	MTL	SC
EPD	-0.6	1.3	55	99	22	3.9	50	1.0
Acc	PE	PE	PE	PE	PE	PE	PE	PE
%RK	95	80	60	60	50	70	60	45

✓ Excellent sire from the '17 Thomas sale that I'm really pleased with. Linebred Firewater-excellent eye appeal!



JRL MO MONEY 1506 PLD

Reg. M864788

Calved: 1-24-15

BW: 98

Adj WW: 865/97

[LT BLUEGRASS 4017 P
LT LEDGER 0332 P
M791626 [LT BRENDA 6120 PLD

[WDZ NORTHERN WIND 8022 PLD ET
JRL WDZ HONOR 106 PLD
F1133541 [FINK PERFECTION 7743 248 GM ET

[LT ASSERTION 1277 P
[LT PEARL'S BREEZE 2236 P
[LT RIO BRAVO 3181 P
[LT BRENDA'S EASE 3055PLD
[LT WYOMING WIND 4020 PLD
[D&D MISS COVERGIRL
[M6 GRID MAKER 104 PET
[M6 MS E46'S DUKE 248 PET

	CE	BW	WW	YW	Milk	MCE	MTL	SC
EPD	5.1	0.9	53	105	17	6.2	43	1.5
Acc	0.26	0.036	0.26	0.18	0.20	0.19	0.22	PE
%RK	60	75	65	50	80	45	85	15

✓ " is becoming a good all-around sire of above average performance and a rock solid range bulls. Probably our biggest mature herd sire. He's always been 100% sound and sires the same.

Notes ...



Thanks for your interest in our program!

DISPOSITION SCORE

We are including this on every lot - disposition is a big priority and these scores are my own assessment from feeding by hand twice a day and working these bulls several times. Disposition also included in the guarantee!

- Scores
- 1 - Nuts
 - 2 - Wild and/or Mean/High-Headed
 - 3 - Average; Normally mild but could act up potentially in the chute or if handled rough
 - 4 - Above Average
 - 5 - Excellent; has never shown at any time, anything but "Happy Bull" behavior
 - 5+ Pet! Might need a stick to get him out of the way, likes to get a scratch now and then!
- Definitely no "1" or "2"s in the sale!*

YEARLING BULLS

Lot	ID P/S/D	Sire Dam	BD	BW BW EPD	Act. WW 205	Adj. WW/Ratio EPD	ADG	Adj. YW/Ratio EPD
1	184 P	[MJ MR TURTON [616T	3-19-21	96 1.2	725	669/103 44	4.00	1309/114 84
* Big, gentle calf - always been a standout!								Disp: 5+
2	1146 P	[DAVID ALLEN COE [4485	3-25-21	104 1.8	785	741/114 57	4.83	1514/131 109
* Powerful performance since birth!								Disp: 5
3	95B P	[CC MR BELVEDERE [479L	3-07-21	86 0.7	730	643/99 47	3.25	1163/101 89
* Moderate BW calf that's eye appealing as well!								Disp: 5+
4	189 P	[JRL MO MONEY [4321	3-19-21	87 0.8	770	709/109 57	4.16	1375/119 106
* Extra everything that's good! Great calf!								Disp: 5+
5	111 P	[CC ZANE [6134	3-8-21	92 0.7	725	642/99 48	3.16	1148/100 87
* Excellent eye appeal, heavy muscled calf will be hard to miss!								Disp: 5+
6	1123 P/S	[DAVID ALLEN COE [64T	3-22-21	91 1.0	790	736/113 52	3.50	1296/113 101
* Great hair, thickness and disposition!								Disp: 5+
7	1100 P	[CC ZANE [532	3-20-21	101 1.6	770	713/110 53	3.02	1193/104 91
* Great calf with excellent performance!								Disp: 5



YEARLING BULLS

Lot	ID P/S/D	Sire Dam	BD	BW BW EPD	Act. WW 205	Adj. WW/Ratio EPD	ADG	Adj. YW/Ratio EPD
8	132P	[WCR SIR IMPRESSIVE [515	3-12-21	98 2.1	840	753/116 62	3.19	1259/109 110
* <i>Big & quiet with big performance!</i>								Disp: 5+
9	1193P	[WCR SIR DUKE [8308	4-6-21	83 0.4	700	726/112 49	3.16	1232/107 91
* <i>Light BW, solid performance and maybe the best looking calf in the offering!</i>								Disp: 5+
10	1302P/S	[TR MR OUTSIDER [162	4-11-21	90 0.8	645	680/105 53	3.25	1200/104 90
* <i>Nice young calf out of a great old cow! 1/4 Red Angus.</i>								Disp: 5
11	167P	[OW MAXIMIZER 4044 [5166	3-17-21	93 -0.1	735	672/103 60	3.58	1245/108 94
* <i>Very solid!</i>								Disp: 5
12	1267P/S	[WCR SIR DUKE [6157	4-7-21	92 1.0	710	704/108 48	4.00	1344/117 96
* <i>Eye appeal and excellent gain!</i>								Disp: 5
13	1106P	[ROLLER COASTER RIDI [701	3-21-21	93 0.4	670	623/96 44	4.01	1263/113 87
* <i>Good looking calf out of Kandi's pet cow "Baby"!</i>								Disp: 5
14	149P	[TR MR GAME ON [6L6	3-14-21	98 1.7	755	683/105 60	3.25	1203/105 90
* <i>Thick, docile & darn good! 1/8 Red Angus.</i>								Disp: 5+
15	92B P/S	[OW MAXIMIZER 4044 [158	3-6-21	81 2.7	700	639/92 50	3.83	1252/109 92
* <i>Big, stretched out calf with a nice light BW!</i>								Disp: 5
16	164P	[JRL MO MONEY [513T	3-17-21	105 2.2	810	742/114 62	3.92	1362/118 107
* <i>He's got a bit of BW, but dang, is he good!</i>								Disp: 5+
17	124P	[PZC STETSON [696	3-10-21	91 0.9	740	659/101 45	3.25	1179/103 86
								Disp: 5
18	157P	[MJ MR TURTON [7117	3-16-21	86 0.4	670	611/94 42	3.66	1197/104 81
* <i>Won't find one thicker!</i>								Disp: 5+
19	1113P	[DAVID ALLEN COE [4268	3-21-21	84 -1.0	725	673/104 56	4.41	1379/120 104
* <i>Performance beast with a light BW!</i>								Disp: 4
20	1149P	[DAVID ALLEN COE [656	3-25-21	97 1.1	760	718/110 58	2.70	1150/100 93
								Disp: 5
21	138P	[OW MAXIMIZER 4044 [5243	3-12-21	86 -1.9	725	651/100 51	3.42	1198/104 85
* <i>Always one of my favorites!</i>								Disp: 5
22	1290P	[OW MAXIMIZER 4044 [6190	4-13-21	92 -0.5	695	707/109 60	3.92	1334/116 93
* <i>This guy will catch your eye. Thick awesome calf!</i>								Disp: 5+



Notes ...

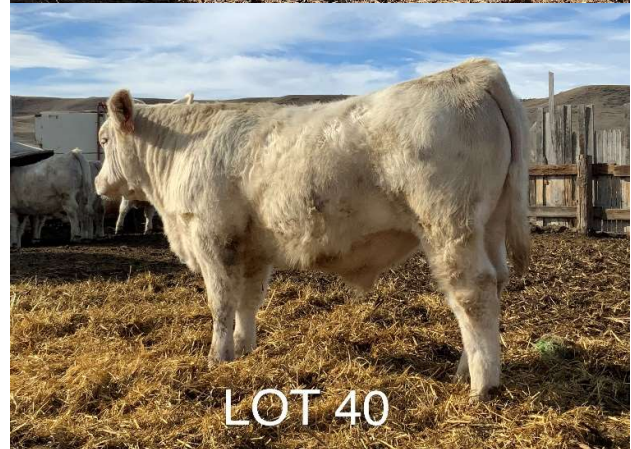
YEARLING BULLS

Lot	ID P/S/D	Sire Dam	BD	BW BW EPD	Act. WW 205	Adj. WW/Ratio EPD	ADG	Adj. YW/Ratio EPD
23	1112P	[JRL MO MONEY [53G	3-21-21	101 2	735	683/105 57	3.75	1283/112 100
* This calf has a bit of a dark nose but there is few, if any, that are better! 1/8 Angus								Disp: 5+
24	87B P	[TR MR OUTSIDER [147	3-2-21	76 -1.5	725	661/102 49	3.50	1221/106 87
* 1/4 Red Angus calf that's out of a cow whose's never had an 80+ calf in 9 calves!								Disp: 5
25	145 P/S	[MJ MR TURTON [479L	3-13-21	112 2	740	669/103 47	4.50	1389/121 83
* Red factor 1/4 RA calf that is a performance beast. Born unassisted and vigorous!								Disp: 5
26	1339D	[TR MR OUTSIDER [6308	4-4-21	89 0.3	680	665/102 53	2.83	1118/97 80
								Disp: 5
27	1128P	[TR MR GAME ON [182	3-21-21	90 1.0	640	631/97 46	3.00	1111/97 89
								Disp: 5
28	1382P	[DAVID ALLEN COE [528	4-8-21	92 0.5	720	717/110 59	2.59	1130/98 92
* Nice young calf with great pattern and good weaning weight!								Disp: 5
29	171P	[DAVID ALLEN COE [894	3-18-21	83 -0.9	650	632/97 46	2.92	1100/96 88
* Low BW, sure out of a lower-milking 3 yr. old. Nice calf!								Disp: 5
30	181P	[CC ZANE [359	3-18-21	89 0.4	650	598/92 44	3.58	1171/102 80
								Disp: 5
31	1185P	[OW MAXIMIZER 4044 [4245	4-2-21	72 -4.1	710	689/106 58	3.00	1169/102 84
* Super low BW coupled with decent performance!								Disp: 5
32	144P	[TR MR GAME ON [6230	3-13-21	93 1.5	755	681/105 52	3.67	1268/110 100
* Big, beefy, good-haired calf!								Disp: 5
33	1107P	[WCR SIR IMPRESSIVE [644	3-21-21	102 2.2	725	675/104 56	3.17	1182/105 101
								Disp: 4
34	90B P	[RAISING CANE [2B12	3-5-21	92 0.5	770	674/104 59	2.92	1141/99 89
* Big ol' tall boy out of a great older cow!								Disp: 5
35	197 P/S	[RAISING CANE [677	3-20-21	95 1.0	710	658/101 54	2.75	1098/95 83
								Disp: 5
36	1240P	[DAVID ALLEN COE [717	4-15-21	90 0.4	700	722/111 56	2.75	1162/101 94
* Great young calf with excellent WW! A little flu post-weaning hurt his gain. He's nice!								Disp: 5
37	1172 P/S	[RAISING CANE [746	3-30-21	72 -2.1	670	645/99 53	3.50	1205/105 93
* Pretty cool looking calf with a super low BW!								Disp: 5



YEARLING BULLS

Lot	ID P/S/D	Sire Dam	BD	BW BW EPD	Act. WW 205	Adj. WW/Ratio EPD	ADG	Adj. YW/Ratio EPD
38	1241 P	[MC LM ALL IN [378	4-9-21	90 -0.8	680	683/105 51	3.25	1203/105 92
* Solid, thick calf!								Disp: 5
39	1348 P	[TR MR GAME ON [788	4-15-21	89 0.8	585	603/93 48	3.67	1190/103 90
* Nice young calf!								Disp: 5
40	1148 D	[MJ MR TURTON [6X2	3-25-21	88 0.3	700	661/102 46	2.83	1114/97 79
* Impressive profile!								Disp: 5
41	1196 P	[JRL MO MONEY [2B78	4-6-21	88 0.8	720	714/110 57	3.08	1207/105 102
* Nice young calf with solid numbers!								Disp: 5
42	1134 P/S	[TR MR OUTSIDER [8243	3-23-21	83 -0.6	605	602/93 48	3.33	1135/99 84
								Disp: 5
43	1242 P	[BRCHE MOTLEY CRUE [8443	4-12-21	93 1.1	690	737/113 61	3.50	1297/113 97
* Big young calf with solid performance! Crue is a full ET sibling to Cane.								Disp: 4
44	1159 P	[MC LM ALL IN [604T	3-26-21	93 0.9	690	654/101 53	2.75	1094/95 81
								Disp: 5
45	191 P	[BRCHE MOTLEY CRUE [3400	3-19-21	96 1.5	660	610/94 51	3.67	1197/104 93
* Crue and Cane are ET flush mates. Nice calf!								Disp: 5
46	156 P	[DAVID ALLEN COE [3292	3-16-21	87 -0.1	635	580/89 49	3.58	1153/100 92
* This guy got pretty sick as a baby. Good calf who is still catching up!								Disp: 5
47	137 P	[OW MAXIMIZER 4044 [5243	3-12-21	86 -1.7	720	646/99 51	3.67	1226/107 99
* Moderate BW, performance and style!								Disp: 5
48	146 P	[DAVID ALLEN COE [6L2	3-13-21	80 -1.2	710	639/98 50	3.67	1226/107 99
* 1/8 Red Angus. Light BW and super good!								Disp: 5
49	179 P	[CC ZANE [5158	3-18-21	93 1.2	730	671/103 51	3.33	1204/105 92
* Super eye appeal and performance!								Disp: 5
50	1432 D	[RAISING CANE [6K1	4-12-21	90 0.2	675	687/106 57	3.33	1220/106 96
* Very sharp looking calf!								Disp: 5
51	1383 D	[MJ MR TURTON [7555	4-10-21	86 0.7	605	620/95 43	3.25	1140/99 77
* Excellent pattern on this young bull!								Disp: 5
52	1405 P	[BRCHE MOTLEY CRUE [329	4-6-21	89 -1.2	620	615/95 53	3.33	1148/100 89
								Disp: 5



Notes ...

YEARLING BULLS

Lot	ID	Sire	BD	BW	Act. WW	205 Adj. WW/Ratio	ADG	Adj. YW/Ratio
	P/S/D	Dam		BW EPD		EPD		EPD
53	1133 P	[BRCHE MOTLEY CRUE [3214	3-23-21	93 0.1	690	647/100 55	2.83	1100/96 85
Disp: 5								
54	1155 D	[JRL MO MONEY [559	3-26-21	112 3.6	800	759/117 56	4.00	1399/122 108
<i>* Big when he was born and hasn't stopped growing since!</i> Disp: 5								
55	108 P	[RAISING CANE [347	3-7-21	55 -1.8	610	535/82 48	2.75	975/85 74
<i>* Calving ease deluxe here in an attractive calf! 1/4 Red Angus</i> Disp: 5								
56	1387 P	[JRL MO MONEY [725	4-27-21	90 1.3	685	746/115 58	3.17	1253/109 103
<i>* Very eye appealing young calf!</i> Disp: 5								
57	1198 P	[OW MAXIMIZER 4044 [2B77	4-8-21	78 -2.9	645	645/99 49	3.42	1192/104 83
<i>* Nice calf with a light BW! He did act up in the chute some.</i> Disp: 3.5								
58	1276 P	[RAISING CANE [4287	4-4-21	89 -0.2	705	693/107 61	3.25	1213/105 96
<i>* Darn good calf! Same story as the previous lot in the clipping chute.</i> Disp: 3.5								
59	1144 P	[WCR SIR IMPRESSIVE [723	3-25-21	79 0.8	645	609/94 54	3.42	1156/101 93
Disp: 4								
60	1394P	[JRL MO MONEY [5181	4-12-21	91 1.4	710	722/111 56	2.70	1154/100 99
<i>* Excellent young bull with great eye appeal!</i> Disp: 5								
61	127 P	[CC MR BELVEDERE [160	3-11-21	79 -0.9	705	665/102 47	3.33	1198/104 89
<i>* Light BW with an awesome disposition!</i> Disp: 5+								
62	1191 P	[DAVID ALLEN COE [780	4-4-21	78 -1.6	625	615/95 48	3.50	1175/102 90
Disp: 5								
63	1281 P	[RAISING CANE [8416	4-15-21	85 -1.0	660	715/110 62	3.51	1276/111 96
<i>* Thick and really good!</i> Disp: 5								
64	163P	[OW MAXIMIZER 4044 [6107	3-17-21	74 -4.1	670	612/94 51	3.33	1145/100 85
<i>* Good calf with a very light birth weight!</i> Disp: 5								
65	1161 P	[OW MAXIMIZER 4044 [7266	3-26-21	88 -2.0	690	654/101 53	3.17	1161/101 86
<i>* Solid calf with good thickness!</i> Disp: 5								
66	1105 P	[OW MAXIMIZER 4044 [132	3-20-21	84 -2.3	670	655/101 50	3.50	1251/106 92
<i>* A 1/4 Red Angus with good numbers and eye appeal!</i> Disp: 5								
67	150 P	[RAISING CANE [506T	3-15-21	86 -0.6	740	672/103 58	3.34	1206/105 95
<i>* Very good calf with eye appeal!</i> Disp: 5								



LOT 47



LOT 49



LOT 51



LOT 56



LOT 60



LOT 63

Notes ...

YEARLING BULLS

Lot	ID	Sire	BD	BW	Act. WW	205 Adj. WW/Ratio	ADG	Adj. YW/Ratio
	P/S/D	Dam		BW EPD		EPD		EPD
68	96B P	[MJ MR TURTON [735	3-9-21	92 0.8	760	675/104 50	3.58	1248/109 85
* This calf is a sale feature. Pretty special!								Disp: 5+
69	1254 P	[TR MR GAME ON [5146	5-16-21	86 1.1	550	657/101 54	4.17	1324/115 100
* Very young and very good!								Disp: 5
70	1345 P	[TR MR GAME ON [113A	4-7-21	90 1.0	670	702/108 60	3.00	1182/103 94
* Nice young calf!								Disp: 5



Notes ... _____



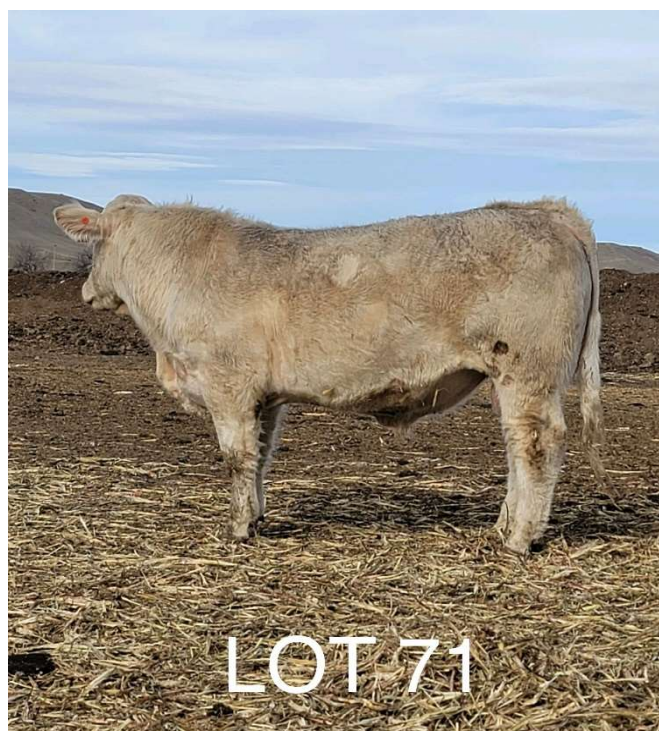
2 YEAR OLD'S

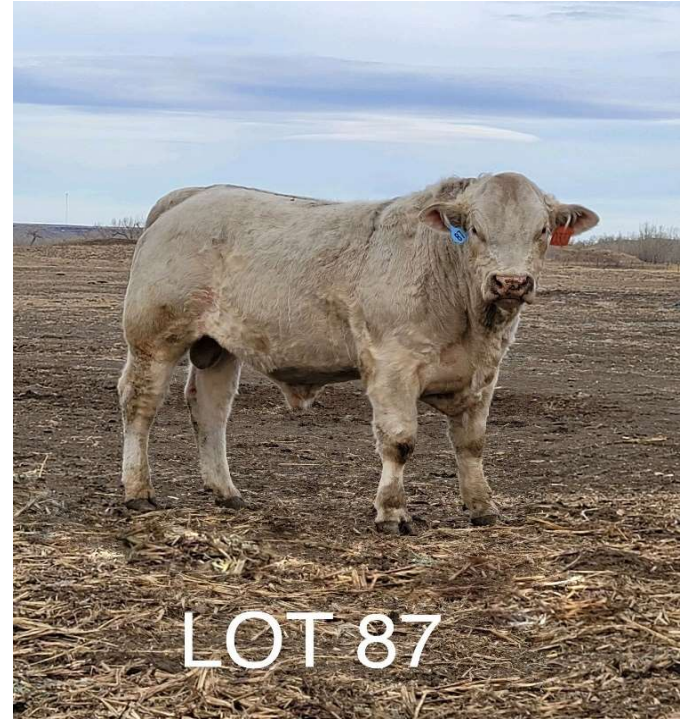
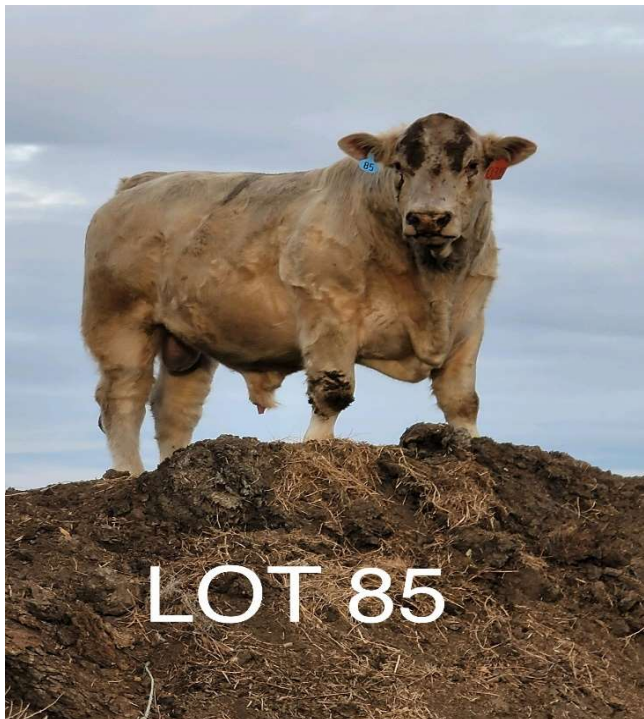
This is a nice group of aged bulls from spring and summer 2020. They're not fat and will be ready for heavy use. Some of these bulls were leased last summer and it will be noted. They all passed a semen test in June and will be tested again along with trich testing before delivery. We will make arrangements at the barn if you want to take them home on sale day.

Lot	ID	Sire	BD	BW	205 Adj. WW/Ratio	30 Day	1-15-22 WT
	P/S/D	Dam		BW EPD	EPD	ADG	YW EPD
71	0226 P	[CC BELVEDERE [4201	4/28/2020	88 0.6	621 42	3.70	1510 79
		<i>* Long, good haired bull that was leased to O'Connell Ranch in '21.</i>					Disp: 5
72	0401 P	[WCR SIR DUKE [4204	4/22/2020	89 0.9	554 45	4.12	1470 75
		<i>* Thick, good natured and calving ease built! O'Connell Ranch '21.</i>					Disp: 5
73	0256 P	[WCR SIR WY WIND [2124	4/30/2020	92 0.8	615 49	3.65	1380 84
		<i>* Long & good! Virgin bull.</i>					Disp: 5
74	0059 P	[RAISING CANE [111	3/15/2020	90 1.0	681 61	4.22	1490 90
		<i>* Bigger frame and really nice! Missed in gather as a calf, weaned late for '21 sale. Virgin bull.</i>					Disp: 5
75	0416 P	[WCR SIR WY WIND [4279	6/1/2020	93 1.1	672 55	3.95	1505 94
		<i>* Lots to like in this thick, big guy! Virgin bull.</i>					Disp: 5
76	0051 D	[WCR SIR DUKE [122	3/26/2020	90 1.3	568 48	4.05	1560 80
		<i>* Big, long bull! Virgin bull.</i>					Disp: 5
77	0153 P	[RAISING CANE [702	3/30/2020	87 -0.4	652 59	3.96	1500 92
		<i>* Excellent bull! Mild ease of foot rot scratched him from '21 sale. Virgin bull.</i>					Disp: 5
78	0414 P	[TR MR OUTSIDER [7504	5/31/2020	85 0.2	581 44	3.30	1310 76
		<i>* Smaller-framed summer bull. Offers calving ease and thickness. Virgin bull.</i>					Disp: 5
79	0405 D	[RAISING CANE [6216	5/22/2020	90 0.3	610 56	3.90	1470 90
		<i>* Long, cool looking range bull. Virgin bull.</i>					Disp: 5
80	0210 D	[RAISING CANE [2B83	4/3/2020	93 1.0	585 60	4.22	1605 95
		<i>* This guy is a stud! Virgin bull</i>					Disp: 5+
81	0404 P	[PZC STETSON [5181	5/25/2020	84 0.3	609 45	3.65	1390 89
		<i>* Thick and very docile with eye appeal! Leased to Schell Ranch '21.</i>					Disp: 5+
82	0014 P	[WCR SIR WY WIND [5336	3/15/2020	96 1.4	590 48	3.90	1505 88
		<i>* An illness scratched this bull from '21 sale. Big, long bull. Virgin</i>					Disp: 5+
83	0397 P	[HEREFORD [119	5/20/2020	98 NA	780 NA	4.30	1650 NA
		<i>* Massive individual- 1/2 Hereford. This bull was kept because a fella wanted one bred this way, but didn't pick him up. Virgin.</i>					Disp: 5+

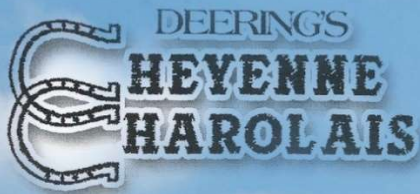
2 YEAR OLD'S

Lot	ID P/S/D	Sire Dam	BD	BW BW EPD	205 Adj. WW/Ratio EPD	30 Day ADG	1-15-22 WT YW EPD
84	0069 P	[MAXIMIZER 4044 [4G71	3/19/2020	87 -2.7	670 56	3.95	1490 91
* Really nice bull that has always been a favorite! Virgin bull.							Disp: 5+
85	0315 P	[ROLLER COASTER RIDE [907	5/14/2020	92 0.9	705 49	3.85	1470 87
* STUD! Virgin bull.							Disp: 5+
86	0109 P	[DAVID ALLEN COE [4267	3/29/2020	93 0.7	635 50	4.05	1510 95
* Big, gentle bull with good thickness. Leased to Schell Ranch '21.							Disp: 5
87	0337 P	[MAXIMIZER 4044 [7181	5/17/2020	84 -3.2	610 45	3.81	1400 82
* Neat looking, smaller framed bull! Virgin bull.							Disp: 5
88	66/O P	[PZC STETSON [331	5/1/2020	94 1.5	615 45	3.92	1450 90
* Good, thick Stetson calf that was raised on a bottle. Nice and very gentle. Virgin bull.							Disp: 5+
89	0047 P	[TR MR OUTSIDER [8B124	3/28/2020	80 -1.0	578 48	3.52	1350 82
* Thick, calving ease bull that spent the summer at the Daly Ranch.							Disp: 5
90	0413 P	[JRL MO MONEY [125	5/22/2020	90 1.0	640 52	3.80	1460 101
* Long, thick bull I've always liked. Virgin bull.							Disp: 5
91	0200 P/S	[MR BELVEDERE [5120	3/30/2020	86 -0.5	595 43	3.60	1380 73
* Good bull - long and quiet. Virgin bull.							Disp: 5





Thank you for taking part our
2022 bull sale! We hope to see
everyone again in 2023!



17960 Base Line Road
Wasta, SD 57791

29th Annual
Charolais Bull Sale
Selling 70 Yearling Charolais Bulls
and 20 Two-Year-Olds
Tuesday, February 8, 2022
2:00 PM MST

