



"A Ranching Outfit Raising Charolais  
Seedstock for Over 18 Years."

## **17th Annual Charolais Bull Sale** **Tuesday, February 9, 2010**



**12:00 p.m. MT**

**at Philip Livestock Auction**  
**Philip, SD**

**Sale Day Phone: 605-859-2577**

**SELLING: 80 Yearling**  
**& 2-Year-Old Bulls**

### **Featured Sires:**

**2TM Unlimited Justice 503**

**2TM Cigar 406 Polled**

**EC Big Wind**

**2TM Triple Ease**

**2TM Infinite Wind**

**2TM Infinite Justice 504 Polled**

- **Bulls Delivered & Kept Free**  
**until May 1st**
- **1st Breeding Season**  
**Guarantee**
- **R-CALF Roll-Over Auction**
- **Sale broadcast on**  
**DVAuction.com**



**Of Wasta,**  
**South**  
**Dakota**



www.CheyenneCharolais.com

## **SALE INFORMATION**

**Joel Deering • (605) 993-3151 or 381-0885**

**17960 Base Line Rd.**

**Wasta, SD 57791**

**jdiamond1969@yahoo.com (e-mail checked daily)**

### **SALE DATE AND TIME:**

**Tuesday, February 9, 2010 – 12:00 Noon (MT)**

### **SALE LOCATION:**

**Philip Livestock Auction • Philip, South Dakota**

### **SALE DAY PHONE:**

**(605) 859-2577 or register to bid online at: DVAuction**

### **AUCTIONEER:**

**Seth Weishaar • (605) 892-2640**

### **SALE REPRESENTATIVES:**

**Don Ravellette • RPI Promotions • (605) 859-2516**

**Dan Piroutek • Milesville, SD • 544-3316 • Tristate Livestock News**

**Jeff Kapperman • (605) 363-3620 • Tri-State Neighbor**

**Kristian Rennert • American International Charolais Association • 308-440-9463**

**ABSENTEE BIDS:** If you cannot be with us on sale day, we will handle any bids in confidence. Please contact Cheyenne Charolais, the auctioneer, or any of the sale representatives.

**DELIVERY:** All bulls will be delivered free of charge after May 1st.

**BREEDER'S GUARANTEE:** Breeding guarantee of 100% and bulls will be semen tested before delivery. Other provisions of our guarantee explained in "Terms and Conditions", inside back cover of the catalog.

**HEALTH:** Vaccinations are up to date and bulls have been poured.

**VETERINARIAN:** Dr. Jim McConaghy, Golden Veterinary Services, Wall, SD • (605) 279-2077

### **A NOTE ABOUT R-CALF:**

*We will once again be donating an animal to R-CALF USA! This year, we will be donating a \$1000 bull sale credit immediately before the sale. I believe their cause is true to the commercial cattlemen of this country, whereas other organizations' interests may be divided. Thank you in advance for your support!*



**Catalog Produced by:  
Ravellette Publications, Inc.  
221 E. Oak Street  
P.O. Box 788**

**Philip, SD 57567-0788**

**Offices in Philip - Wall - Kadoka - Faith - Bison -  
Murdo - New Underwood, SD**

**Phone: (605) 859-2516 FAX: (605) 859-2410**

**e-mail: ads@pioneer-review.com**

**www.rpipromotions.com**

## **Dear Cattleman,**

Welcome to our 17th annual offering of Charolais bulls!

It's been a great year for moisture and grass here, with tons and tons of hay and since last year's sale our family has grown to include my new wife, Susan, and her daughter, Eva!

First of all, a special thanks to all of the buyers and bidders who helped make our sale last year a success!

The purchasers of the co-high-selling bulls from last year were Kieth Smith of Cottonwood and Larry Nelson of Buffalo; volume buyer was Keith Reuer of Reliance; and this year I would like to announce our Producer of the Year as the Ross Williams family of Philip. Ross and Janice will have the choice of a \$2000 credit at the travel agency of their choice or a \$2000 credit at next year's sale. The Williams family has purchased bulls out of our program nearly every year for 16 years!

Thanks to all for many years of continued support!

I think this year's offering of bulls is very strong. You will notice going through the catalog that they are "greener" than usual, due to the weather challenges we faced last spring, five inches of rain in a cold, wet October and two extremely violent blizzards this winter – the one over Christmas lasting over 48 hours. I would say that, all in all, this set of bulls faced every challenge and are still presenting themselves very well. Although a little lighter, the quality is what you've come to expect from us and you'll like this set of bulls.

I am quite proud of this year's set of 2's and the way they've developed. This isn't your average set of older bulls. There are some truly exceptional individuals. They are developed, but not overly so and will be solid and sound for years of service. Included in this set of bulls are some that would make outstanding bulls for heifers, as well as some big, stout performance bulls.

The calves are very consistent, as I'm sure all of you want your calf crops to be. Birth weights are moderate, and conformation, eye appeal and quality will be strong from the first calf in the door to the last. There are some awesome calves in the offering this year!

The challenges we face in the cow business will always be there. There are many things beyond our control, but one thing we can control is what we breed our cows to. Crossbreeding has always been and will continue to be profitable for the producers who utilize it. The Charolais breed has always had and will always have something to offer to the commercial cattleman – and the breed has come a long way since the 80's. These aren't the bulls from 20 or 30 years ago. They're smoother, easier calving, more moderate, easier fleshing and definitely more

docile. Yet, they still offer the advantages of superior birth to weaning growth, feedlot performance and hybrid vigor that the breed has always had. In short, this set of bulls is very "rancher-friendly." I believe that whether it's your first time to Philip for our bull sale or your 16th ... (which I'm proud to say some of you have been) you will like this set of bulls!

Included in this year's offering are some bulls guest consigned by Ted Morgan, now of Oklahoma and formerly of Greeley, CO – the man whom I purchased all of the "2TM" prefix herd bulls from that have done such an outstanding job in our herd. His philosophy is the same as mine in that he believes in easy calving bulls that have good structure and conformation.

These bulls have been ratioed with mine, but were on feed less time this fall. Additionally, Ted's bulls carry the Cheyenne Charolais one full year guarantee, and any problems if they should arise would be handled locally by me.

In closing, more people that I should thank for their work in bringing you this set of bulls. My cow and farming helpers – Rod Volmer, Truett Northup, and Dave Harstad. My children, Cheyenne, Autumn, John and Sheridan for all their help, my mom for her help with the website and advertising, and my amazing wife, Susan, for her help with everything! Also, Kelly, Don and Beau at Ravellette Publications for the excellent, professional job that they do in the publishing business.

We will be taking the bulls in early to Philip this year and they should be washed and ready for viewing by Sunday Feb. 7th. We'll also be hosting a free steak feed for customers and sale personnel on Monday night before the sale. This is informal and all are invited so please attend if you can. Also, if you need accommodations please contact us so that we can book you a room. And, if you can't be in Philip for the sale for whatever reason, please register with

DVAuction so that you can bid online!

Again, thanks to our many loyal customers. We will do our best to keep and earn your business!

**From all of us at  
Cheyenne  
Charolais  
Sincerely,  
Joel Deering**



Clockwise from bottom left: Sheridan Deering, Autumn Deering, Cheyenne Deering, Susan Ricci-Deering, Joel Deering, John Wayne Deering and Eva Ricci



# REFERENCE SIRES



## **E A** 2TM UNLIMITED JUSTICE 503 POLLED

Reg. M702591 Calved: 2-20-05 BW/CE: 91/1  
ADJ WW: 878/113.3

{PF IMPRESSED 620 P ET {JWK IMPRESSIVE D040 ET  
PFINFINITEJUSTICE1001PET {MISS KC CROCUS 904 POLL  
M613588 {VCR MISS DUCHESS 351 PLD {VCR SIR DUKE 914 PLD  
{SKYMONT P UNLIMITED 0115 {VCR MISS MAC'S PERFECTION  
BCI 469 MISS LIMITED PLD {BCR POLLED UNLIMITED 003  
F699462 {BCR MISTA Z093 POLL {P-3 LADY MONTE 8-5X  
{SIR HI GUY 7032  
{MISS THAIDA 6657

2010 EPDs:	BW	WW	YW	MILK	MTNL
	1.7	24	37	9	21

✓ This big guy is having a huge impact in a big hurry in our program. From providing "naked bull rides" for little kids to sireing growthy, correct bulls, this "Gentle Giant" does it all.



## **E B** EC BIG WIND 873 POLLED

Reg. M705608 Calved: 3-6-05 BW/CE: 81/1  
ADJ WW: 737/95.6 ADJ. 365 WW: 1247

{SCHURRTOP 5627 {WCR SIR DUKE 783  
LT WYOMING WIND 4020 PLD {MISS SUGAR VALLEY 908  
M411450 {LT CHAP'S LADY 2170P {LT UNLIMITED CHAPS 0109  
{VCR MR PERFORMER 6102ET {LT PRAIRIE MAIDEN 8095  
BOW MS PERFORMA 873HPOLL {HBR PERFORMANCE 932 P  
F900411 {BOW MS MORE 809X {VCR MISS MAC IV 619  
{DESIGNERS MORE 3169  
{RJB LADY JANE 3109R

2010 EPDs:	BW	WW	YW	MILK	MTNL
	-2.4	10	19	1	6

✓ John Wayne's pick at the '06 Jamie Eggleston sale! We asked a lot of this guy and he delivered! A nearly perfect record of calving ease on heifers - pulls on PB heifers were rare; commercial heifers were no pulls at all. Birth to weaning spread on calves has been outstanding and I expect his weaning & yearling numbers will go up. Nice set of sons in this offering, most out of two-year-old heifers.

## **E C** 2TM TRIPLE EASE 405 POLLED

Reg. M682703 Calved: 3-3-04 BW/CE: 89/1  
ADJ WW: 875/10.5

{PF IMPRESSED 620 P ET {JWK IMPRESSIVE D040 ET  
PFINFINITEJUSTICE1001PET {MISS KC CROCUS 904 POLL  
M613588 {VCR MISS DUCHESS 351 PLD {VCR SIR DUKE 914 PLD  
{BALDRIDGE FASTTRACK 82F {VCR MISS MAC'S PERFECTION  
2TM MS FASTTRACK 201 PLD {LT UNLIMITED EASE 9108  
F954654 {FRRS TIGER LILLY PLD {BALDRIDGE SWEETHEART 53D  
{FREDS HUSKER 7701  
{FRRS MISS FERRIS 709G P

2010 EPDs:	BW	WW	YW	MILK	MTNL
	1.6	26	38	5	18

✓ One of the "Justice Brothers". Good disposition, neat-headed bull that sires same. Several outstanding sons sell!

## **E D** 2TM INFINITE JUSTICE 504 POLLED

Reg. M702590 Calved: 2-22-05 BW/CE: 84/1  
ADJ WW: 842/108.7

{PF IMPRESSED 620 P ET {JWK IMPRESSIVE D040 ET  
PF INFINITE JUSTICE 1001 P ET {MISS KC CROCUS 904 POLL  
M613588 {VCR MISS DUCHESS 351 PLD {VCR SIR DUKE 914 PLD  
{SCC CASCADE J004 P ET {VCR MISS MAC'S PERFECTION  
2TM MS CASCADE 353 P {SPARROWS ALLIANCE 513G  
F978393 {MS HOODOO Z7096 DOMINION {KEYS WK FREDS LADY 938Y  
{SCHURRTOP DOMINION PLD  
{ASTEL ZC121

2010 EPDs:	BW	WW	YW	MILK	MTNL
	2.2	29	40	-4	10

✓ We look for big things from this guy in the future, and sure like what I see so far. Big group of sons in the offering! Denver Class Winner, NWSS '06!

# JR. HERD SIRES



## 2TM INFINITE WIND 604

Reg. M722471  
ADJ WW: 844

Calved: 3-2-06

BW/CE: 87/1

{LT WYOMING WIND 4020 PLD  
**THREE TREES WIND 0383 ET**  
M637722 {THREE TREES NANCY 8121ET

{PF INFINITE JUSTICE 1001 PET  
**2TM MS UNLIMITED 1001-421**  
F999323 {BCI MISS LIMITED 6075 PLD

{SCHURRTOP 5627  
{LT CHAP'S LADY 2170P  
{SKYMONT EASE 2078  
{WCR MISS MAC IV 5138 ET  
{PF IMPRESSED 620 P ET  
{VCR MISS DUCHESS 351 PLD  
{SKYMONT P UNLIMITED 0115  
{MISS THAIDA 9912

2010 EPDs:	BW	WW	YW	MILK	MTNL
	-0.9	28	52	5	19

✓ *Royally-bred and thick as you would want one! Out of a half-sister to "Norbert" (2TM Unlimited Cigar) and grandson of the awesome Batey 6075 cow. Look at his four great-grandsires – Schurrtop 5627, Ease 2078, Impressed and Unlimited 0115; I can't imagine four more "rancher-friendly" bulls for calving ease plus growth.*

**LOT R-CALF:**  
\$1000 Bull Sale Credit--  
proceeds to be donated to  
R-CALF, good for purchase  
at this year's sale.



## CHYN NORBERT'S FINALE 6157 POLLED

Reg. Pending

ADJ WW: 811/121

Calved: 5-17-06

ADJ. 365: 1550/119

BW/CE: 93/1

ADG: 4.62

{LHD CIGAR E46  
**2TM UNLIMITED CIGAR PLD**  
{BCI MISS LIMITED 6075

{HF PASTOR BILL 007  
**CHYN 1945'S MS BILL 4111P**  
{TRASK'S MS ST DUKE 1945

{LHD MR PERFECT Y416  
{LHD MS CLASSIC BELL  
{SKYMONT P UNLIMITED  
{MISS THAIDA  
{WCR PRIME CUT  
{WAP LILAC  
{WCR SIR DUKE 783  
{TRASK'S MS AVIGNON

2008 EPDs:	BW	WW	YW	MILK	MTNL
	1.7	36	51	17	

✓ *If any bull ever to come out of our program was ever destined to be a herd bull – this is him. This was the last "Norbert" calf born on our ranch. Also, his dam 4111 by Pastor Bill is the last calf out of the awesome St. Duke 1945 cow, the "dam of herd bulls" that produced many thousands of dollars for Tracy Trask as well as myself while I owned her. Deep-bodied, thick and so gentle you can give him a scratch anywhere! Scrotal of 42 cm at 11 months of age, we turned him in a week shy of his first birthday!*

**Yearling weights and ADGs  
will be available by sale day or  
at  
[www.cheyennecharolais.com](http://www.cheyennecharolais.com)**

## TWO-YEAR-OLD BULL



## MSC HOODOO JUSTICE ICEMAN POLLED

CALVED: 5-30-08

Reg.# M766854

EPDs

Birth Wt. / CE	87 / 1	BW	1.5
Adj. 205 WW / Ratio	685	WW	16
Wt. 2-1-10	1400	YW	20
ADG	4.10	MILK	7

{PF IMPRESSED  
**PF INFINITE JUSTICE ET**  
SIRE {VCR MISS DUCHESS

{JWK IMPRESSIVE  
{MS KC CROCUS  
{VCR SIR DUKE 914  
{VCR MISS MAC'S PERFECTION

{2TM CIGAR HOODOO  
**2TM MS HOODOO 301**  
DAM {MS HOODOO SANDCREEK

{LHD CIGAR E46  
{MS HOODOO BANJO  
{HOODOO 3013  
{ORR-TEL ZF098

★★★★★ *Truly a herd bull prospect out of the Ted Morgan herd in Colorado. Five star bull that has it all – moderate birth, exceptional growth, thickness, length & disposition. Ted has since moved to Oklahoma and has consigned 7 bulls to this sale, including this awesome prospect!*

# TWO-YEAR-OLD BULLS



## 3 2TM 0383 Wind 853 Polled

CALVED: 10-8-08	Reg.# M771784	EPDs	
Birth Wt. / CE	87 / 1	BW	0.4
Adj. 205 WW / Ratio	688	WW	14
Wt. 2-1-10	1260	YW	28
ADG	4.21	MILK	4

[LT WYOMING WIND  
THREE TREES WIND 0383 ET  
SIRE [THREE TREES NANCY  
[SCHURRTOP 5627  
[LT CHAP'S LADY  
[SKYMONT EASE 2078  
[WCR MISS MAC IV

[HOODOO 3013  
MS HOODOO SANDCREEK Z8  
DAM [ORR-TEL ZF098  
[HOODOO 5078  
[MISS SAND Z  
[MR ASTRO 4038  
[MS ORTEL Z

✓ I don't know of a more attractive, smooth-patterned bull in the sale. This bull could be a herd sire in a lot of herds!

## 5 CHYN Os-Nor 8/20W Polled

CALVED: 6-3-08	Reg.#	EPDs	
Birth Wt. / CE	91 / 1	BW	1.4
Adj. 205 WW / Ratio	644	WW	24
Wt. 2-1-10	1550	YW	34
ADG	4.01	MILK	7

[2TM UNLIMITED CIGAR  
CHYN NORBERT'S FINALE 6157P  
SIRE [CHYN 1945'S MS BILL  
[LHD CIGAR E46  
[BCI MISS LIMITED  
[HF PASTOR BILL 007  
[TRASK'S MS ST DUKE 194

[73 ACR OSCAR G33  
CHEYENNE MS OSCAR 375  
DAM [73 ACR MS LACEY  
[73 ACR OSCAR D413  
[73 ACR MS CUJO  
[BCC LACEY'S 562  
[EB MS AVIGNON

✓ Just a real good, solid range bull!

## 2 2TM INSTITUTE 856 Polled

CALVED: 11-2-08	Reg.# M771922	EPDs	
Birth Wt. / CE	86 / 1	BW	0.2
Adj. 205 WW / Ratio	771	WW	24
Wt. 2-1-10	1265	YW	45
ADG	3.92	MILK	9

[LT WESTERN SPUR  
HCR INSTITUTE 5054  
SIRE [MISS HCR REFLECTION  
[EATONS PREDICTOR  
[LT MAIDEN'S BREEZE  
[LT REFLECTION  
[MISS HCR NIKE

[CCR SCHURSHOT ET  
2TM MS SCHURSHOT 212P  
DAM [BCI 469 MISS LIMITED  
[SCHURRTOP 5627  
[WCR MISS PERFECTION  
[SKYMONT P UNLIMITED 0115  
[BCR MISTA

✓ By the popular Institute – this is a long & thick, extremely docile bull that will be very easy calving.

## 4 CHEYENNE WIND 8/02 B Polled

CALVED: 2-28-08	Reg.#	EPDs	
Birth Wt. / CE	69 / 1	BW	-3.1
Adj. 205 WW / Ratio	542	WW	4
Wt. 2-1-10	1300	YW	12
ADG	3.47	MILK	6

[LT WYOMING WIND  
EC BIG WIND 873P  
SIRE [BOW MS PERFORMA  
[SCHURRTOP 5627  
[LT CHAP'S LADY  
[VCR MR PERFORMER  
[BOW MS MORE

[JES CORONA K106  
CHYN MS SCHURR 6121P  
DAM [CHYN MS SCHURRLITE  
[HCR CORONA 2015  
[JES LITE GAL  
[CHYN SANDHILLER  
[UCROSS TRIPLE DUKE

✓ This is a Cadillac heifer bull with light BW throughout his pedigree.



Bull  
Clipping



# TWO-YEAR-OLD BULLS

## **6 CHEYENNE JUSTICE 8/0-59** **POLLED**

CALVED: 5-16-08	Reg.#	EPDs	
Birth Wt. / CE	97 / 1	BW	1.9
Adj. 205 WW / Ratio	663	WW	26
Wt. 2-1-10	1600	YW	35
ADG	3.86	MILK	10

[PF INFINITE JUSTICE] [PF IMPRESSED]  
 2TM INFINITE JUSTICE 504P [VCR MISS DUCHESS]  
 SIRE [2TM MS CASCADE] [SCC CASCADE]  
 [MS HOODOO DOMINION]

[HC CW 4131P] [WR CHUCKWAGON]  
 CHYN MISS HC 9209 PLD [HEBBERT'S MS ACTOR]  
 DAM [DB HOOK MS AVIGNON] [DBL HOOKS AVIGNON G157]  
 [DBL HOOKS MS MORE]

✓ *This bull looks good and acts good and always will.  
 You'll like this one.*



## **7 CHEYENNE JUSTICE 8/14G** **POLLED**

CALVED: 5-28-08	Reg.#	EPDs	
Birth Wt. / CE	93 / 1	BW	1.1
Adj. 205 WW / Ratio	704	WW	25
Wt. 2-1-10	1505	YW	40
ADG	4.21	MILK	5

[PF INFINITE JUSTICE] [PF IMPRESSED]  
 2TM UNLIMITED JUSTICE 503 [VCR MISS DUCHESS]  
 SIRE [BCI 469 MISS LIMITED] [SKYMONT P UNLIMITED 0115]  
 [BCR MISTA]

[CHYN NAVIGATOR 505] [SCHURRTOP DC INTIMIDATOR]  
 CHYN MS NAV P110P [CHEYENNE MS AVIGNON]  
 DAM [73 ACR MS PEG] [ACF PEGASUS]  
 [73 ACR MS AVIGNON]

✓ *This bull is big & powerful! Super good with an A+  
 disposition! 3/4 brother to last year's lot 17.*



## **8 CHEYENNE CIG 8/91B** **DEHORND**

CALVED: 6-1-08	Reg.#	EPDs	
Birth Wt. / CE	90 / 1	BW	1.1
Adj. 205 WW / Ratio	631	WW	22
Wt. 2-1-10	1375	YW	28
ADG	3.90	MILK	7

[LHD CIGAR E46] [LHD MR PERFECT Y416]  
 2TM CIGAR 406 [LHD MS CLASSIC BELL]  
 SIRE [FRRS TIGER LILLY] [FRED'S HUSKER]  
 [ ]

[2TM UNLIMITED CIGAR] [LHD CIGAR E46]  
 CHYN SWEETHEART 502P [BCI MISS LIMITED]  
 DAM [CHYN CORONETTE N914] [JES CORONA K106]  
 [U-CROSS MAC-A-DATOR]

✓ *Double-bred Cigar. Nice, thick bull.*

## **9 CHEYENNE EASE 8/103** **POLLED**

CALVED: 6-15-08	Reg.#	EPDs	
Birth Wt. / CE	86 / 1	BW	-2.3
Adj. 205 WW / Ratio	629	WW	18
Wt. 2-1-10	1280	YW	27
ADG	4.12	MILK	5

[PF INFINITE JUSTICE] [PF IMPRESSED]  
 2TM TRIPLE EASE 405P [VCR MISS DUCHESS]  
 SIRE [2TM MS FASTTRACK] [BALDRIDGE FASTTRACK]  
 [FRRS TIGER LILLY]

[2TM UNLIMITED CIGAR] [LHD CIGAR E46]  
 CHYN MS NORBERT 5X7P [BCI MISS LIMITED]  
 DAM [CHYN MS RF J4P] [RED ANGUS]  
 [73 ACR MISS CONOCO]

✓ *If you're looking for moderate frame & thickness, plus  
 calving ease - here he is! A full brother to last year's lot 11.  
 7/8 bull.*

# TWO-YEAR-OLD BULLS

## **CHEYENNE JUSTICE 8/103** **POLLED**

CALVED: 5-12-08	Reg.#	EPDs	
Birth Wt. / CE	102 / 1	BW	2.1
Adj. 205 WW / Ratio	744	WW	31
Wt. 2-1-10	1540	YW	37
ADG	4.26	MILK	6

[PF INFINITE JUSTICE]		[PF IMPRESSED]	
2TM UNLIMITED JUSTICE 503P		[VCR MISS DUCHESS]	
SIRE	[BCI 469 MISS LIMITED]	[SKYMONT P UNLIMITED 0115]	
		[BCR MISTA]	
[CHEYENNE SANDHILLER]		[HC CW 4131P]	
CHYN SANDY 569P		[BCI 449 OK MISS]	
DAM	[CHYN MS AVIGNON 543]	[B7B KING]	
		[TRASK MS AVIGNON]	

✓ Super is how I describe this massive meat machine!

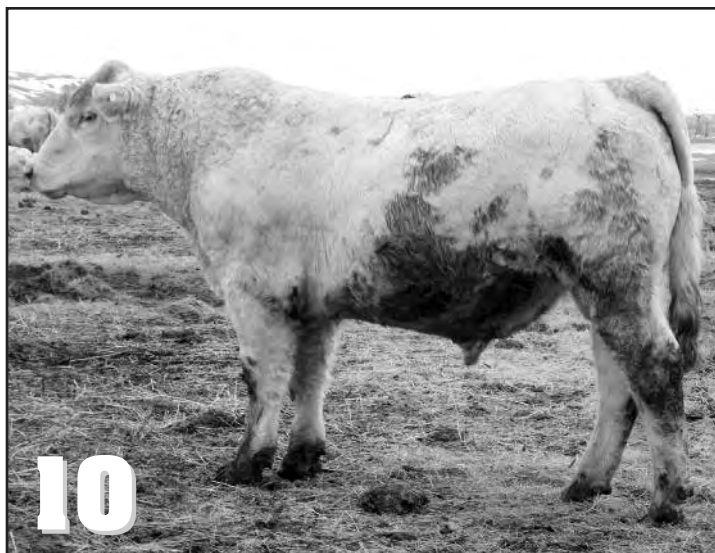


## **CHYN Os-Nor 8/85** **DEHORND**

CALVED: 5-10-08	Reg.#	EPDs	
Birth Wt. / CE	95 / 1	BW	1.5
Adj. 205 WW / Ratio	628	WW	26
Wt. 2-1-10	1595	YW	40
ADG	3.79	MILK	3

[2TM UNLIMITED CIGAR]		[LHD CIGAR E46]	
CHYN NORBERT'S FINALE 6157P		[BCI MISS LIMITED]	
SIRE	[CHYN 1945'S MS BILL]	[HF PASTOR BILL 007]	
		[TRASK'S MS ST DUKE 194]	
[73 ACR OSCAR G33P]		[73 ACR OSCAR D413]	
CHYN LADY OSCAR 237P		[73 ACR MS CUJO]	
DAM	[73 ACR PEG Y194]	[MCF CASANOVA]	
		[73 ACR JASMINE]	

✓ Good natured, quiet bull – big scrotal.



## **CHEYENNE JUSTICE 8/33W** **POLLED**

CALVED: 6-5-08	Reg.#	EPDs	
Birth Wt. / CE	87 / 1	BW	0.7
Adj. 205 WW / Ratio	632	WW	23
Wt. 2-1-10	1500	YW	31
ADG	3.85	MILK	4

[PF INFINITE JUSTICE]		[PF IMPRESSED]	
2TM INFINITE JUSTICE 504		[VCR MISS DUCHESS]	
SIRE	[2TM MISS CASCADE]	[SCC CASCADE]	
		[MS HOODOO DOMINION]	
[SCR SIR DOMINION]		[SKYMONT DOMINION]	
CHYN LADY DOM 113P		[SCR MISS AVIGNON]	
DAM	[73 ACR DUCHESS]	[DCR SIR DUKE 245]	
		[73 ACR CUJO'S IDA]	

✓ Going to be a big boy!

## **CHEYENNE WIND 8/178** **POLLED**

CALVED: 5-17-08	Reg.#	EPDs	
Birth Wt. / CE	86 / 1	BW	-0.6
Adj. 205 WW / Ratio	701	WW	15
Wt. 2-1-10	1425	YW	22
ADG	3.95	MILK	6

[LT WYOMING WIND]		[SCHURRTOP 5627]	
EC BIG WIND 873P		[LT CHAP'S LADY]	
SIRE	[BOW MS PERFORMA]	[VCR MR PERFORMER]	
		[BOW MS MORE]	
[HF PASTOR BILL 007]		[WCR PRIME CUT]	
CHEYENNE MS BILL P81P		[WAP LILAC]	
DAM	[CHYN MS OSCAR 0119]	[73 ACR OSCAR G33]	
		[CHYN MS AVIGNON]	

✓ Quiet, super-fancy kind of bull! Highly recommended for young cows.



# TWO-YEAR-OLD BULLS

## **14 CHYN INFINITE WIND 8/173** **POLLED**

CALVED: 5-14-08	Reg.#	EPDs	
Birth Wt. / CE	85 / 1	BW	-0.7
Adj. 205 WW / Ratio	606	WW	20
Wt. 2-1-10	1525	YW	34
ADG	4.21	MILK	8

[THREE TREES WIND 0383] [LT WYOMING WIND]  
 2TM INFINITE WIND 604P [THREE TREES NANCY]  
 SIRE [2TM MS UNLIMITED 1001] [PF INFINITE JUSTICE]  
 [BCI MSS LIMITED]

[HF PASTOR BILL 007] [WCR PRIME CUT]  
 CHEYENNE MS BILL 337P [WAP LILAC]  
 DAM [U CROSS MS KAN JO 5906] [DC KAN JO]  
 [TRASK'S MS AVIGNON]

✓ Moderate, docile, massively thick individual!

## **16 CHEYENNE JUSTICE 8/G38** **POLLED**

CALVED: 6-10-08	Reg.#	EPDs	
Birth Wt. / CE	88 / 1	BW	1.4
Adj. 205 WW / Ratio	650	WW	22
Wt. 2-1-10	1350	YW	30
ADG	3.77	MILK	3

[PF INFINITE JUSTICE] [PF IMPRESSED]  
 2TM INFINITE JUSTICE 504P [VCR MISS DUCHESS]  
 SIRE [2TM MS CASCADE] [SCC CASCADE]  
 [MS HOODOO DOMINION]

[73 ACR OSCAR G33] [73 ACR OSCAR D413]  
 CHEYENNE MS OSCAR4 214 [73 ACR MS CUJO]  
 DAM [TRASK MS AVIGNON] [TRASK MR AVIGNON 5217]  
 [RR MISS HANNI]

✓ Long & smooth!

## **18 CHEYENNE JUSTICE 8/131-0** **POLLED**

CALVED: 5-6-08	Reg.#	EPDs	
Birth Wt. / CE	94 / 1	BW	1.1
Adj. 205 WW / Ratio	701	WW	27
Wt. 2-1-10	1550	YW	44
ADG	4.16	MILK	8

[PF INFINITE JUSTICE] [PF IMPRESSED]  
 2TM UNLIMITED JUSTICE 504P [VCR MISS DUCHESS]  
 SIRE [BCI 469 MISS LIMITED] [SKYMONT P UNLIMITED 0115]  
 [BCR MISTA]

[CHEYENNE NAVIGATOR 403] [DC INTIMIDATOR]  
 CHYN LADY NAV 0111P [DB HOOK MS AVIGNON]  
 DAM [WCR MISS DUKE 0143] [BR DUKE 261]  
 [WCR MISS TRADITION]

✓ Smooth, thick – really good! He'll move out of your way, but has never been a problem to handle.

## **15 CHEYENNE WIND 8/135** **POLLED**

CALVED: 4-29-08	Reg.#	EPDs	
Birth Wt. / CE	74 / 1	BW	-2.8
Adj. 205 WW / Ratio	542	WW	13
Wt. 2-1-10	1305	YW	17
ADG	3.56	MILK	5

[LT WYOMING WIND] [SCHURRTOP 5627]  
 EC BIG WIND 873P [LT CHAP'S LADY]  
 SIRE [BOW MS PERFORMA] [VCR MR PERFORMER]  
 [BOW MS MORE]

[2TM UNLIMITED CIGAR] [LHD CIGAR]  
 CHYN MS NORB 627P [BCI MISS LIMITED]  
 DAM [CHYN MS BILL 43Z] [HF PASTOR BILL 007]  
 [CHYN MS AVIGNON]

✓ This bull is, I think, the best heifer bull prospect in the sale. Small-framed, yet thick and nice-patterned.

## **17 CHYN EASY WIND 8/57W** **POLLED**

CALVED: 4-4-08	Reg.#	EPDs	
Birth Wt. / CE	78 / 1	BW	-1.7
Adj. 205 WW / Ratio	576	WW	16
Wt. 2-1-10	1425	YW	24
ADG	3.66	MILK	8

[LT WYOMING WIND] [SCHURRTOP 5627]  
 EC BIG WIND 873P [LT CHAP'S LADY]  
 SIRE [BOW MS PERFORMA] [VCR MR PERFORMER]  
 [BOW MS MORE]

[2TM TRIPLE EASE 405P] [PF INFINITE JUSTICE]  
 CHYN MS EASE 640P [2TM MS FASTTRACK]  
 DAM [CHYN CORONETTE] [JES CORONA K106]  
 [73 ACR MS CUJO]

✓ Free-moving, athletic heifer bull prospect. This good bull is okay to handle, but will stay out of your way if he can.

## **19 CHYN WIND-NAV 8/62-0** **POLLED**

CALVED: 6-30-08	Reg.#	EPDs	
Birth Wt. / CE	86 / 1	BW	-0.5
Adj. 205 WW / Ratio	622	WW	25
Wt. 2-1-10	1310	YW	33
ADG	3.87	MILK	5

[THREE TREES WIND 0383] [LT WYOMING WIND]  
 2TM INFINITE WIND 604P [THREE TREES NANCY]  
 SIRE [2TM MS UNLIMITED 1001] [PF INFINITE JUSTICE]  
 [BCI MISS LIMITED]

[CHEYENNE NAVIGATOR 403] [SCHURRTOP DC INTIMIDATOR]  
 CHEYENNE LADY NAV 103 [CHEYENNE MS AVIGNON]  
 DAM [CHYN MS FOUNDATION] [TRASK MR AVIGNON 3904]  
 [CHYN SNOWHITE CNTRY]

✓ Easy-calving, smooth-made.

# TWO-YEAR-OLD BULLS

## **20 CHYN BILL'S CIGAR 8/95B DEHORND**

CALVED: 5-22-08	Reg.#	EPDs	
Birth Wt. / CE	92 / 1	BW	1.8
Adj. 205 WW / Ratio	647	WW	24
Wt. 2-1-10	1400	YW	38
ADG	3.81	MILK	6

[LHD CIGAR E46] [LHD MR PERFECT Y416]  
**2TM CIGAR 406P** [LHD MS CLASSIC BELL]  
**SIRE** [FRRS TIGER LILLY] [FRED'S HUSKER]  
[FRRS MISS FERRIS]

[HF PASTOR BILL 007] [WCR PRIME CUT]  
**CHEYENNE MS BILL 575** [WAP LILAC]  
**DAM** [CHYN LADY NAV 9303] [CHEYENNE NAVIGATOR 403]  
[TRASK'S MS MAC]

✓ *One of two 406 sons. Good, thick bull.*

## **22 CHYN JUSTICE 8/83W POLLED**

CALVED: 5-13-08	Reg.#	EPDs	
Birth Wt. / CE	91 / 1	BW	1.1
Adj. 205 WW / Ratio	661	WW	31
Wt. 2-1-10	1510	YW	42
ADG	4.22	MILK	9

[PF INFINITE JUSTICE] [PF IMPRESSED]  
**2TM INFINITE JUSTICE 504P** [VCR MISS DUCHESS]  
**SIRE** [2TM MS CASCADE] [SCC CASCADE]  
[MS HOODOO DOMINION]

[SCHURRTOP ML 6056] [DC INTIMIDATOR]  
**U CROSS MS JK 9403P** [LHD MS PERFECTION]  
**DAM** [U CROSS MS MAC 4111] [TRASK MR MAC 2517]  
[TRASK MS ST DUKE]

✓ *Real nice, front-pasture kind of bull that you will like for his quality & disposition!*

## **24 CHEYENNE WIND 8/85W POLLED**

CALVED: 5-22-08	Reg.#	EPDs	
Birth Wt. / CE	84 / 1	BW	-1.2
Adj. 205 WW / Ratio	596	WW	11
Wt. 2-1-10	1375	YW	20
ADG	3.69	MILK	5

[LT WYOMING WIND] [SCHURRTOP 5627]  
**EC BIG WIND 873P** [LT CHAP'S LADY]  
**SIRE** [BOW MS PERFORMA] [VCR MR PERFORMER]  
[BOW MS MORE]

[JES CORONA K106] [HCR CORONA 2015]  
**CHYN MS CORONA 7/X29** [JES LITE GAL]  
**DAM** [CHEYENNE SANDHILLER]  
[73 ACR MS PROSPECTOR]

✓ *Good calving ease, excellent hair!*

## **21 CHYN Low-Rise 8/147G POLLED**

CALVED: 6-15-08	Reg.#	EPDs	
Birth Wt. / CE	86 / 1	BW	-2.0
Adj. 205 WW / Ratio	590	WW	22
Wt. 2-1-10	1330	YW	28
ADG	3.98	MILK	7

[PF INFINITE JUSTICE] [PF IMPRESSED]  
**2TM TRIPLE EASE 405P** [VCR MISS DUCHESS]  
**SIRE** [2TM MS FASTTRACK] [BALDRIDGE FASTTRACK]  
[FRRS TIGER LILLY]

[JES CORONA K106] [HCR CORONA 2015]  
**CHEYENNE CORONETTE 305P** [JES LITE GAL]  
**DAM** [CHYN MS OSCAR 9166] [73 ACR OSCAR G33]  
[WCR MISS MAC 024]

✓ *Moderate frame & thickness! Calving-ease deluxe!*

## **23 CHEYENNE NOR-NAVI 8/71W DEHORND**

CALVED: 5-20-08	Reg.#	EPDs	
Birth Wt. / CE	99 / 1	BW	2.2
Adj. 205 WW / Ratio	659	WW	26
Wt. 2-1-10	1685	YW	48
ADG	4.41	MILK	9

[2TM UNLIMITED CIGAR] [LHD CIGAR E46]  
**CHYN NORBERT'S FINALE 6157P** [BCI MISS LIMITED]  
**SIRE** [CHYN 1945'S MS BILL] [HF PASTOR BILL 007]  
[TRASK'S MS ST DUKE 194]

[CHEYENNE NAVIGATOR 403] [DC INTIMIDATOR]  
**CHYN MS NAVI 0512** [CHEYENNE MS AVIGNON]  
**DAM** [CHYN KATHERINE 206] [WCR SIR FAB MAC 809]  
[WCR MISS DUKE]

✓ *Possibly the most powerful performance bull in the sale. This bull is really going to get big and will sure sire scale-pushing calves!*

## **25 CHEYENNE EASE 8/61W POLLED**

CALVED: 6-16-08	Reg.#	EPDs	
Birth Wt. / CE	87 / 1	BW	0.6
Adj. 205 WW / Ratio	606	WW	24
Wt. 2-1-10	1325	YW	33
ADG	3.70	MILK	6

[PF INFINITE JUSTICE] [PF IMPRESSED]  
**2TM TRIPLE EASE 405P** [VCR MISS DUCHESS]  
**SIRE** [2TM MS FASTTRACK] [BALDRIDGE FASTTRACK]  
[FRRS TIGER LILLY]

[HF PASTOR BILL 007] [WCR PRIME CUT]  
**CHEYENNE BILLIE P2/P** [WAP LILAC]  
**DAM** [CHYN MS OSCAR 149] [73 ACR OSCAR G33]  
[U CROSS MISS NAVIMAC]

✓ *Nice bull. Good thickness with an excellent disposition.*

# YEARLING BULLS

## 26 CHEYENNE JUSTICE 9/9G POLLED

CALVED: 3-21-09	Reg.#	EPDs	
Birth Wt. / CE	86 / 1	BW	-0.5
Adj. 205 WW / Ratio	536 / 94	WW	22
Adj. 365 WW / Ratio	1036 / 95	YW	27
ADG	3.125	MILK	2

[PF INFINITE JUSTICE  
2TM INFINITE JUSTICE 504P  
SIRE [2TM MS CASCADE  
[PF IMPRESSED  
[VCR MISS DUCHESS  
[SCC CASCADE  
[MS HOODOO DOMINION

[JES CORONA K106  
CHEYENNE CORONETTE R26P  
DAM [CHYN MS OSCAR 0111P  
[HCR CORONA  
[JES LITE GAL  
[73 ACR OSCAR 633P  
[CHEYENNE MS 211

✓ Born two days before the "big one" – hurt his performance. Good, gentle calf.



## 29 CHYN Nf/OSCAR 9/30G POLLED

CALVED: 3-25-09	Reg.#	EPDs	
Birth Wt. / CE	97 / 1	BW	1.9
Adj. 205 WW / Ratio	477 / 84	WW	31
Adj. 365 WW / Ratio	1126 / 102	YW	41
ADG	4.06	MILK	10

[2TM UNLIMITED CIGAR  
CHYN NORBERT'S FINALE 6157P  
SIRE [CHYN 1945'S MS BILL  
[LHD CIGAR E46  
[BCI MISS LIMITED  
[HF PASTOR BILL 007  
[TRASK'S MS ST DUKE 194

[73 ACR OSCAR G33  
CHYN MS OSCAR 228P  
DAM [CHEYENNE MS 211 622P  
[73 ACR OSCAR D414  
[73 ACR MS CUJO  
[DC INTIMIDATOR  
[CHEYENNE MS AVIGNON

✓ Born in second blizzard. Previous bull calves out of this cow (3) averaged 671 at weaning. Nice calf, slow start.

## 27 CHEYENNE INFINITE EASE 9/4IW POLLED

CALVED: 4-11-09	Reg.#	EPDs	
Birth Wt. / CE	77 / 1	BW	-1.9
Adj. 205 WW / Ratio	535 / 94	WW	22
Adj. 365 WW / Ratio	1096 / 100	YW	31
ADG	3.60	MILK	6

[THREE TREES WIND 0383  
2TM INFINITE WIND 604P  
SIRE [2TM MS UNLIMITED 1001  
[LT WYOMING WIND  
[THREE TREES NANCY  
[PF INFINITE JUSTICE  
[BCI MISS LIMITED

[2TM UNLIMITED CIGAR  
CHYN NORBERT'S GIRL 540P  
DAM [CHYN MS SCHURLITE  
[LHD CIGAR E46  
[BCI MISS LIMITED  
[CHEYENNE SANDHILLER  
[U CROSS TRIPLE DUKE

✓ I wouldn't be afraid of this bull on heifers. Nicely-made, good disposition.

## 28 CHYN EASY BILL 9/9I-0 POLLED

CALVED: 3-12-09	Reg.#	EPDs	
Birth Wt. / CE	85 / 1	BW	0.3
Adj. 205 WW / Ratio	592 / 104	WW	22
Adj. 365 WW / Ratio	1056 / 96	YW	42
ADG	2.90	MILK	8

[PF INFINITE JUSTICE  
2TM TRIPLE EASE 405P  
SIRE [2TM MS FASTTRACK  
[PF IMPRESSED  
[VCR MISS DUCHESS  
[BALDRIDGE FASTTRACK  
[FRRS TIGER LILLY

[HF PASTOR BILL 007  
CHEYENNE BILLIE 312D  
DAM [73 ACR DUCHESS  
[WCR PRIME CUT  
[WAP LILAC  
[DCR SIR DUKE 245  
[73 ACR CUJO'S IDA

## 31 CHEYENNE JUSTICE 9/39W POLLED

CALVED: 4-10-09	Reg.#	EPDs	
Birth Wt. / CE	92 / 1	BW	1.7
Adj. 205 WW / Ratio	594 / 104	WW	38
Adj. 365 WW / Ratio	1136 / 103	YW	49
ADG	3.39	MILK	7

[PF INFINITE JUSTICE  
2TM INFINITE JUSTICE 504P  
SIRE [2TM MS CASCADE  
[PF IMPRESSED  
[VCR MISS DUCHESS  
[SCC CASCADE  
[MS HOODOO DOMINION

[CHEYENNE SANDHILLER  
CHEYENNE SANDY P22P  
DAM [U CROSS TRIPLE DUKE  
[HC CW 4131  
[BCI 449 OK MISS  
[SCHURRTOP ML 6056  
[U-CROSS MS MAC

✓ Maternal brother to last year's lot 18.



# YEARLING BULLS

<b>32</b>	<b>CHYN NOR-COR 9142</b>	<b>POLLED</b>
CALVED: 4-2-09	Reg.#	EPDs
Birth Wt. / CE	98 / 1	BW 1.3
Adj. 205 WW / Ratio	622 / 109	WW 31
Adj. 365 WW / Ratio	1261 / 115	YW 46
ADG	3.68	MILK 5
<div> <div>[2TM UNLIMITED CIGAR CHYN NORBERT'S FINALE 6157P SIRE [CHYN 1945'S MS BILL</div> <div>[LHD CIGAR E46 [BCI MISS LIMITED [HF PASTOR BILL 007 [TRASK'S MS ST DUKE 194</div> </div>		
<div> <div>[JES CORONA K106 CHYN MISS CORONA 696 DAM [CHEYENNE WILLOW 402</div> <div>[HCR CORONA 2015 [JES LITE GAL [DC INTIMIDATOR [CHEYENNE ANGEL</div> </div>		

✓ Big, long calf with a lot of grow!

<b>33</b>	<b>CHEYENNE WINDY 9/82-0</b>	<b>POLLED</b>
CALVED: 3-11-09	Reg.#	EPDs
Birth Wt. / CE	78 / 1	BW -1.5
Adj. 205 WW / Ratio	564 / 99	WW 23
Adj. 365 WW / Ratio	1100 / 100	YW 35
ADG	3.35	MILK 4
<div> <div>[THREE TREES WIND 0383 2TM INFINITE WIND 604P SIRE [2TM MS UNLIMITED 1001</div> <div>[LT WYOMING WIND [THREE TREES NANCY [PF INFINITE JUSTICE [BCI MISS LIMITED</div> </div>		
<div> <div>[EC BIGWIND 873 CHEYENNE MS WIND 7116P DAM [CHYN SUPER MOM'S 546</div> <div>[LT WYOMING WIND [BOW MS PERFORMA [B7B KING 2062 [WCR MISS DUKE 095</div> </div>		

✓ A lot of calving ease.

<b>34</b>	<b>CHEYENNE JUSTICE 9/45G</b>	<b>HORNED</b>
CALVED: 3-29-09	Reg.#	EPDs
Birth Wt. / CE	89 / 1	BW 0.3
Adj. 205 WW / Ratio	625 / 109	WW 30
Adj. 365 WW / Ratio	1106 / 101	YW 42
ADG	3.01	MILK 8
<div> <div>[PF INFINITE JUSTICE 2TM UNLIMITED JUSTICE 503P SIRE [BCI 469 MISS LIMITED</div> <div>[PF IMPRESSED [VCR MISS DUCHESS [SKYMONT P UNLIMITED 0115 [BCR MISTA</div> </div>		
<div> <div>[2TM CIGAR 406 CHEYENNE MS CIG 6166 DAM [73 ACR DUCHESS</div> <div>[LHD CIGAR E46 [FRRS MISS FERRIS [DC SIR DUKE 217 [73 ACR MS AVIGNON</div> </div>		

✓ How about the "classic" look on this guy! He got by this fall without getting dehorned and I didn't have the heart to chop them off of this good, long, sweet-dispositioned calf.



<b>35</b>	<b>CHYN EASYNV 9/43W</b>	<b>POLLED</b>
CALVED: 4-12-09	Reg.#	EPDs
Birth Wt. / CE	87 / 1	BW 0.7
Adj. 205 WW / Ratio	616 / 108	WW 20
Adj. 365 WW / Ratio	1136 / 103	YW 28
ADG	3.25	MILK 4
<div> <div>[PF INFINITE JUSTICE 2TM TRIPLE EASE 405P SIRE [2TM MS FASTTRACK</div> <div>[PF IMPRESSED [VCR MISS DUCHESS [BALDRIDGE FASTTRACK [FRRS TIGER LILLY</div> </div>		
<div> <div>[CHEYENNE NAVIGATOR 403 CHYN EASYNV 9219P DAM [CHYN KATHERINE 206</div> <div>[DC INTIMIDATOR [CHEYENNE MS AVIGNON [WCR SIR FAB MAC 809 [WCR MISS DUKE</div> </div>		



# YEARLING BULLS

## 36 CHYN DOUBLE-NORB 8/98B POLLED

CALVED: 3-12-09	Reg.#	EPDs	
Birth Wt. / CE	88 / 1	BW	0.4
Adj. 205 WW / Ratio	615 / 108	WW	35
Adj. 365 WW / Ratio	1079 / 98	YW	47
ADG	2.90	MILK	9

[2TM UNLIMITED CIGAR  
CHYN NORBERT'S FINALE 6157P  
SIRE [CHYN 1945'S MS BILL  
[LHD CIGAR E46  
[BCI MISS LIMITED  
[HF PASTOR BILL 007  
[TRASK'S MS ST DUKE 194

[2TM UNLIMITED CIGAR  
CHYN MS NORB 6127P  
DAM [U CROSS DBL MAC 8405  
[LHD CIGAR  
[BCI MISS LIMITED 6075  
[U CROSS MR MAC 2605  
[TRASK'S MS MAC

✓ Super thick – excellent calf!

## 39 CHYN JUSTICE-WIND 9149 POLLED

CALVED: 4-6-09	Reg.#	EPDs	
Birth Wt. / CE	91 / 1	BW	1.7
Adj. 205 WW / Ratio	576 / 101	WW	19
Adj. 365 WW / Ratio	1193 / 108	YW	24
ADG	3.86	MILK	3

[LT WYOMING WIND  
EC BIG WIND 873P  
SIRE [BOW MS PERFORMA  
[SCHURRTOP 5627  
[LT CHAP'S LADY  
[VCR MR PERFORMER  
[BOW MS MORE

[2TM UNLIMITED JUSTICE 503  
CHYN MS JUSTICE 7/5G-D  
DAM [U CROSS MS MAC 4111  
[PF INFINITE JUSTICE  
[BCI 469 MISS LIMITED  
[TRASK MR MAC 2517  
[TRASK'S MS ST DUKE 194

✓ Tremendous growth on dam's side of this calf!

## 42 CHYN NF-CIGAR 8/49G POLLED

CALVED: 3-28-09	Reg.#	EPDs	
Birth Wt. / CE	102 / 1	BW	2.3
Adj. 205 WW / Ratio	590 / 103	WW	30
Adj. 365 WW / Ratio	1060 / 96	YW	42
ADG	2.94	MILK	6

[2TM UNLIMITED CIGAR  
CHYN NORBERT'S FINALE 6157P  
SIRE [CHYN 1945'S MS BILL  
[LHD CIGAR E46  
[BCI MISS LIMITED  
[HF PASTOR BILL 007  
[TRASK'S MS ST DUKE 194

[SCHURRTOP ML 6056P  
CHYN MS SCHURR 106D/TW  
DAM [WCR MISS DUKE 095  
[DC INTIMIDATOR  
[LHD MS PERFECTION  
[BR DUKE  
[WCR MISS MAC

✓ 3/4 brother to 2008's second high seller, lot 13. I've always liked this good-natured, good-looking calf.

## 38 CHEYENNE JUSTICE 9138 POLLED

CALVED: 4-2-09	Reg.#	EPDs	
Birth Wt. / CE	91 / 1	BW	0.9
Adj. 205 WW / Ratio	598 / 104	WW	30
Adj. 365 WW / Ratio	1110 / 101	YW	41
ADG	3.20	MILK	3

[PF INFINITE JUSTICE  
2TM INFINITE JUSTICE 504P  
SIRE [2TM MS CASCADE  
[PF IMPRESSED  
[VCR MISS DUCHESS  
[SCC CASCADE  
[MS HOODOO DOMINION

[2TM CIGAR 406  
CHYN MISS CIG 675 P  
DAM [CHEYENNE MS JB 674  
[LHD CIGAR E46  
[FRRS MISS FERRIS  
[JMB INTIMIDATOR  
[DB HOOK MS AVIGNON

## 41 CHEYENNE CIGAR 9160 DEHORNED

CALVED: 4-7-09	Reg.#	EPDs	
Birth Wt. / CE	94 / 1	BW	0.8
Adj. 205 WW / Ratio	570 / 100	WW	23
Adj. 365 WW / Ratio	1206 / 110	YW	41
ADG	3.98	MILK	8

[LHD CIGAR E46  
2TM CIGAR 406P  
SIRE [FRRS TIGER LILLY  
[LHD MR PERFECT Y416  
[LHD MS CLASSIC BELL  
[FRED'S HUSKER  
[FRRS MISS FERRIS

[CHEYENNE TARGET 8123  
CHYN TARGETTE 6156P  
DAM [CHYN MS AVI-TWIN 8154  
[EC BULLSEYE  
[WCR MISS MAC 024  
[CHEYENNE NAVIGATOR 40  
[DBL HOOK MS AVIGNON

✓ Good gain – nice calf.



# YEARLING BULLS

## **44** CHEYENNE JUSTICE 9143 POLLED

CALVED: 4-3-09	Reg.#	EPDs	
Birth Wt. / CE	89 / 1	BW	1.5
Adj. 205 WW / Ratio	551 / 97	WW	23
Adj. 365 WW / Ratio	1065 / 97	YW	31
ADG	3.21	MILK	4

[PF INFINITE JUSTICE] [PF IMPRESSED]  
 2TM UNLIMITED JUSTICE 503P [VCR MISS DUCHESS]  
 SIRE [BCI 469 MISS LIMITED] [SKYMONT P UNLIMITED 0115]  
 [BCR MISTA]

[2TM CIGAR 406P] [LHD CIGAR E46]  
 CHYN MS CIGAR 686P [FRRS MISS FERRIS]  
 DAM [73 ACR MS CUJO] [BR/MCF CUJO X106]  
 [73 MS AVIGNON]

## **46** CHEYENNE JUSTICE 9141 POLLED

CALVED: 4-2-09	Reg.#	EPDs	
Birth Wt. / CE	101 / 1	BW	1.4
Adj. 205 WW / Ratio	579 / 101	WW	22
Adj. 365 WW / Ratio	1191 / 108	YW	38
ADG	3.82	MILK	4

[PF INFINITE JUSTICE] [PF IMPRESSED]  
 2TM INFINITE JUSTICE 504P [VCR MISS DUCHESS]  
 SIRE [2TM MS CASCADE] [SCC CASCADE]  
 [MS HOODOO DOMINION]

[73 ACR OSCAR G33] [73 ACR OSCAR D413]  
 CHYN MS OSCAR 9122 [73 ACR MS CUJO]  
 DAM [CHEYENNE MS AVIGNON] [DOUBLE HOOKS SCULPTOR]  
 [CHEYENNE MS AVIROK]

## **47** CHYN DOUBLE-NORB 953 POLLED

CALVED: 3-19-09	Reg.#	EPDs	
Birth Wt. / CE	91 / 1	BW	0.6
Adj. 205 WW / Ratio	658 / 114	WW	25
Adj. 365 WW / Ratio	1134 / 103	YW	40
ADG	2.98	MILK	11

[2TM UNLIMITED CIGAR] [LHD CIGAR E46]  
 CHYN NORBERT'S FINALE 6157P [BCI MISS LIMITED]  
 SIRE [CHYN 1945'S MS BILL] [HF PASTOR BILL 007]  
 [TRASK'S MS ST DUKE 194]

[2TM UNLIMITED CIGAR] [LHD CIGAR E46]  
 CHYN NORBETTE 6106P [BCI MISS LIMITED]  
 DAM [CHYN MS NAVI 1237] [CHEYENNE NAVIGATOR 4031]  
 [TRASK MS DADDY]

✓ Powerful double-bred Cigar son of 6157. Super calf.

## **45** CHYN EASY-SAND 9/81-0 POLLED

CALVED: 3-11-09	Reg.#	EPDs	
Birth Wt. / CE	98 / 1	BW	2.0
Adj. 205 WW / Ratio	682 / 119	WW	30
Adj. 365 WW / Ratio	1194 / 109	YW	40
ADG	3.20	MILK	11

[PF INFINITE JUSTICE] [PF IMPRESSED]  
 2TM TRIPLE EASE 405P [VCR MISS DUCHESS]  
 SIRE [2TM MS FASTTRACK] [BALDRIDGE FASTTRACK]  
 [FRRS TIGER LILLY]

[CHEYENNE SANDHILLER] [HC CW 4131]  
 CHYN MS SANDY 324P [BCI 449 OK MISS]  
 DAM [WCR MISS MT MAC 121] [SCD SIR MONT DBL MAC]  
 [WCR MISS DUKE]

✓ Big, long & powerful calf!




David clipping bull.




**47**




# YEARLING BULLS

		<b>CHEYENNE WIND 9221</b>		<b>POLLED</b>	
CALVED: 4-20-09		Reg.#	EPDs		
Birth Wt. / CE		85 / 1	BW	-2.5	
Adj. 205 WW / Ratio		529 / 93	WW	11	
Adj. 365 WW / Ratio		1045 / 95	YW	17	
ADG		3.22	MILK	3	
[LT WYOMING WIND		[SCHURRTOP 5627			
EC BIG WIND 873P		[LT CHAP'S LADY			
SIRE [BOW MS PERFORMA		[VCR MR PERFORMER			
		[BOW MS MORE			
[2TM TRIPLE EASE		[PF INFINITE JUSTICE			
CHYN MS EASE 7104P		[2TM MISS FASTTRACK			
DAM [CHEYENNE MS NAVI		[CHYN NAVIGATOR 505			
		[CHYN MS AVIGNON			


✓ Super-calving ease!

 <b>50</b>		<b>CHYN NOR-JUST 937</b>		<b>POLLED</b>	
<b>CALVED: 3-16-09</b>		<b>Reg.#</b>	<b>EPDs</b>		
<b>Birth Wt. / CE</b>		<b>97 / 1</b>	<b>BW</b>	<b>1.0</b>	
<b>Adj. 205 WW / Ratio</b>		<b>572 / 100</b>	<b>WW</b>	<b>23</b>	
<b>Adj. 365 WW / Ratio</b>		<b>1124 / 102</b>	<b>YW</b>	<b>32</b>	
<b>ADG</b>		<b>3.45</b>	<b>MILK</b>	<b>7</b>	
[PF INFINITE JUSTICE		[PF IMPRESSED			
2TM INFINITE JUSTICE 504P		[VCR MISS DUCHESS			
SIRE [2TM MS CASCADE		[SCC CASCADE			
		[MS HOODOO DOMINION			
[2TM UNLIMITED CIGAR		[LHD CIGAR E46			
CHYN NORBETTE 550P		[BCI MISS LIMITED 6075			
DAM [CHYN MS NAVI 0207		[CHYN NAVIGATOR 403			
		[73 ACR MS CUJO			


✓ Good performance with a nice disposition; excellent dam!

		<b>CHEYENNE JUSTICE 9217</b>		<b>POLLED</b>	
<b>CALVED: 4-18-09</b>		<b>Reg.#</b>	<b>EPDs</b>		
<b>Birth Wt. / CE</b>		<b>98 / 1</b>	<b>BW</b>	<b>1.7</b>	
<b>Adj. 205 WW / Ratio</b>		<b>518 / 91</b>	<b>WW</b>	<b>29</b>	
<b>Adj. 365 WW / Ratio</b>		<b>1132 / 103</b>	<b>YW</b>	<b>43</b>	
<b>ADG</b>		<b>3.84</b>	<b>MILK</b>	<b>7</b>	
[PF INFINITE JUSTICE		[PF IMPRESSED			
2TM UNLIMITED JUSTICE 503P		[VCR MISS DUCHESS			
SIRE [BCI 469 MISS LIMITED		[SKYMONT P UNLIMITED 0115			
		[BCR MISTA			
[JES CORONA K106		[HCR CORONA 2015			
CHYN MS CORONETTE 3/914		[JES LITE GAL			
DAM [73 ACR MS CUJO		[BR MCF CUJO X106			
		[73 ACR MS FOGGY			

✓ Just a good, stocky, attractive calf! One of the better gaining calves.

		<b>49</b>		<b>CHYN AVI-JUSTICE 9220</b>		<b>POLLED</b>	
CALVED: 4-19-09				Reg.#		EPDs	
Birth Wt. / CE				84 / 1		BW	0.3
Adj. 205 WW / Ratio				637 / 112		WW	31
Adj. 365 WW / Ratio				1130 / 103		YW	40
ADG				3.08		MILK	12
[PF INFINITE JUSTICE				[PF IMPRESSED			
2TM UNLIMITED JUSTICE 503P				[VCR MISS DUCHESS			
SIRE [BCI 469 MISS LIMITED				[SKYMONT P UNLIMITED 0115			
				[BCR MISTA			
[CHEYENNE NAVIGATOR 505				[SCHURRTOP DC INTIMIDATOR			
CHEYENNE MS AVIGNON P11				[CHYN MS AVIGNON			
DAM [73 ACR MS KRUGER				[BR-LF KRUGERRAND			
				[73 ACR MS AVIGNON			

✓ This bull is a maternal brother to the high-selling lot 56 in '08 to Brady Schofield.

	<b>51</b>	<b>CHEYENNE JUSTICE 9/55B</b>				<b>POLLED</b>
CALVED: 5-13-09			Reg.#		EPDs	
Birth Wt. / CE			88 / 1		BW	1.2
Adj. 205 WW / Ratio			620 / 109		WW	28
Adj. 365 WW / Ratio			1161 / 106		YW	42
ADG			3.38		MILK	5
[PF INFINITE JUSTICE			[PF IMPRESSED			
2TM UNLIMITED JUSTICE 503P			[VCR MISS DUCHESS			
SIRE [BCI 469 MISS LIMITED			[SKYMONT P UNLIMITED 0115			
			[BCR MISTA			
[CHEYENNE NAVIGATOR 403			[DC INTIMIDATOR			
CHYN LADY NAV 0113P / TW			[CHYN MS AVIGNON			
DAM [CHEYENNE ANGEL 212			[BR DUKE 261			
			[WCR MISS TRADITION			

✓ This very young calf is one of the best in the sale!



Getting clipped!

# YEARLING BULLS



## 56

### 2TM ALLIANCE 919 POLLED

CALVED: 3-2-09	Reg.# M775403	EPDs	
Birth Wt. / CE	85 / 1	BW	-0.4
Adj. 205 WW / Ratio	744 / 130	WW	29
Adj. 365 WW / Ratio	1160 / 106	YW	52
ADG	2.60	MILK	-1

[LT WYOMING WIND  
SPARROW'S ALLIANCE  
SIRE [CHARDEL PARADISE

[SCHURRTOP 5627  
[LT CHAP'S LADY  
[HTA NORTHERN LIGHT  
[CHARDEL PARADISE

[THREE TREES WIND  
2TM MS 0383 WIND  
DAM [2TM MISS UNLIMITED

[LT WYOMING WIND  
[THREE TREES NANCY  
[PF INFINITE JUSTICE  
[BCI 469 MISS LIMITED

✓ A little short on ears, but not performance! Good calf, excellent disposition! By the popular Alliance.



## 56



## 57

### CHEYENNE I-WIND 9134 DEHORND

CALVED: 4-2-09	Reg.#	EPDs	
Birth Wt. / CE	84 / 1	BW	-1.4
Adj. 205 WW / Ratio	585 / 102	WW	22
Adj. 365 WW / Ratio	1163 / 106	YW	29
ADG	3.61	MILK	1

[THREE TREES WIND 0383  
2TM INFINITE WIND 604P  
SIRE [2TM MS UNLIMITED 1001

[LT WYOMING WIND  
[THREE TREES NANCY  
[PF INFINITE JUSTICE  
[BCI MISS LIMITED

[2TM CIGAR 406  
CHEYENNE MS CIG 650P  
DAM [CHEYENNE MS OSCAR

[LHD CIGAR E46  
[FRRS MISS FERRIS  
[73 ACR OSCAR G33  
[CHEYENNE MISS JB

✓ Thick calf – excellent disposition.



## 58

### CHYN JUSTICE-COR 9/20G POLLED

CALVED: 3-22-09	Reg.#	EPDs	
Birth Wt. / CE	85 / 1	BW	-0.3
Adj. 205 WW / Ratio	576 / 101	WW	23
Adj. 365 WW / Ratio	1112 / 101	YW	35
ADG	3.35	MILK	2

[PF INFINITE JUSTICE  
2TM UNLIMITED JUSTICE 503P  
SIRE [BCI 469 MISS LIMITED

[PF IMPRESSED  
[VCR MISS DUCHESS  
[SKYMONT P UNLIMITED 0115  
[BCR MISTA

[JES CORONA K106  
CHEYENNE MS COR 483P  
DAM [CHEYENNE MS OSCAR 9166

[HCR CORONA  
[JES LITE GAL  
[73 ACR OSCAR G33  
[WCR MISS MAC

✓ Really thick, quiet calf!



## 59

### 2TM ALLIANCE 934 POLLED

CALVED: 3-27-09	Reg.# M775402	EPDs	
Birth Wt. / CE	87 / 1	BW	0.2
Adj. 205 WW / Ratio	637 / 111	WW	14
Adj. 365 WW / Ratio	1037 / 94	YW	27
ADG	2.50	MILK	4

[LT WYOMING WIND  
SPARROWS ALLIANCE 513G  
SIRE [CHARDEL PARADISE

[SCHURRTOP 5627  
[LT CHAP'S LADY  
[HTA NORTHERN LIGHT  
[CHARDEL PARADISE

[PF INFINITE JUSTICE  
2TM MISS UNLIMITED 1001  
DAM [BCI MISS LIMITED 6075

[PF IMPRESSED  
[VCR MISS DUCHESS  
[SKYMONT P UNLIMITED 0115  
[MISS THAIDA

✓ Super thick, nice calf that is royally bred. By Alliance, out of our herd sire Norbert's half-sister.



## 59

# YEARLING BULLS

<div> <div>60</div> <div>CHYN EASYBILL 9/99B</div> <div>POLLED</div> </div>			
CALVED: 3-12-09		Reg.#	EPDs
Birth Wt. / CE	86 / 1	BW	-1.8
Adj. 205 WW / Ratio	470 / 83	WW	21
Adj. 365 WW / Ratio	1174 / 106	YW	28
ADG	4.40	MILK	-3
[PF INFINITE JUSTICE 2TM TRIPLE EASE 405P SIRE [2TM MS FASTTRACK		[PF IMPRESSED [VCR MISS DUCHESS [BALDRIDGE FASTTRACK [FRRS TIGER LILLY	
[HF PASTOSR BILL 007 CHEYENNE MS BILL 530P DAM [73 ACR MS CUJO		[WCR PRIME CUT [WAP LILAC [MCF CUJO X32 [H73 MS AVIGNON	

✓ *Thick, easy calving bull with an excellent hair coat. Excellent gain!*

<div> <div>62</div> <div>CHEYENNE T-BILL 9/47W</div> <div>POLLED</div> </div>			
CALVED: 4-12-09		Reg.#	EPDs
Birth Wt. / CE	103 / 1	BW	1.8
Adj. 205 WW / Ratio	657 / 115	WW	37
Adj. 365 WW / Ratio	1181 / 107	YW	50
ADG	3.28	MILK	11
[PF INFINITE JUSTICE 2TM TRIPLE EASE 405P SIRE [2TM MS FASTTRACK		[PF IMPRESSED [VCR MISS DUCHESS [BALDRIDGE FASTTRACK [FRRS TIGER LILLY	
[HF PASTOR BILL 007 CHEYENNE BILLIE 457P DAM [CHYN MS NAVI 9302		[WCR PRIME CUT [WAP LILAC [CHEYENNE NAVIGATOR 40 [TRASK'S MS MAC	

✓ *Excellent calf. Maternal brother to lot 1 in 2007, one of the high-selling bulls to Micky Simons, White Owl.*

<div> <div>66</div> <div>CHYN JUSTICE 9/28B</div> <div>POLLED</div> </div>			
CALVED: 4-5-09		Reg.#	EPDs
Birth Wt. / CE	92 / 1	BW	1.2
Adj. 205 WW / Ratio	618 / 108	WW	31
Adj. 365 WW / Ratio	1126 / 102	YW	42
ADG	3.18	MILK	7
[PF INFINITE JUSTICE 2TM INFINITE JUSTICE 504P SIRE [2TM MS CASCADE		[PF IMPRESSED [VCR MISS DUCHESS [SCC CASCADE [MS HOODOO DOMINION	
[73 ACR OSCAR G33 CHYN MS OSCAR 230P DAM [CHYN MS RF 010P		[73 ACR OSCAR D413 [73 ACR MS CUJO [CHYN NAVIGATOR 403 [CHYN MS RF	

<div> <div>61</div> <div>CHYN JUSTICE 9/87-0</div> <div>POLLED</div> </div>			
CALVED: 3-13-09		Reg.#	EPDs
Birth Wt. / CE	86 / 1	BW	1.0
Adj. 205 WW / Ratio	543 / 95	WW	30
Adj. 365 WW / Ratio	1143 / 104	YW	38
ADG	3.75	MILK	5
[PF INFINITE JUSTICE 2TM UNLIMITED JUSTICE 503P SIRE [BCI 469 MISS LIMITED		[PF IMPRESSED [VCR MISS DUCHESS [SKYMONT P UNLIMITED 0115 [BCR MISTA	
[CHEYENNE SANDHILLER CHEYENNE SANDY P110P DAM [73 MS PROSPECTOR D721		[HC CW 4131 [BCI 449 OK MISS [MCF ORVAN [73 MS AVIGNON	

✓ *Excellent gain!*

<div> <div>65</div> <div>CHEYENNE JUSTICE 9132</div> <div>POLLED</div> </div>			
CALVED: 4-1-09		Reg.#	EPDs
Birth Wt. / CE	93 / 1	BW	1.0
Adj. 205 WW / Ratio	632 / 111	WW	25
Adj. 365 WW / Ratio	1174 / 106	YW	37
ADG	3.39	MILK	8
[PF INFINITE JUSTICE 2TM INFINITE JUSTICE 504P SIRE [2TM MS CASCADE		[PF IMPRESSED [VCR MISS DUCHESS [SCC CASCADE [MS HOODOO DOMINION	
[HF PASTOR BILL 007 CHYN MS BILL 6X13 DAM [TRASK MS PERFORMER		[WCR PRIME CUT [WAP LILAC [HBR PERFORMER [TRASK MS MORE	

✓ *Super performance, long & good!*



*Joel clipping his bulls.*



# YEARLING BULLS



## 67

### CHYN Te-Nav 9147 Polled

CALVED: 4-6-09	Reg.#	EPDs	
Birth Wt. / CE	91 / 1	BW	0.8
Adj. 205 WW / Ratio	664 / 116	WW	29
Adj. 365 WW / Ratio	1230 / 112	YW	40
ADG	3.54	MILK	9

[PF INFINITE JUSTICE  
2TM TRIPLE EASE 405P  
SIRE [2TM MS FASTTRACK

[PF IMPRESSED  
[VCR MISS DUCHESS  
[BALDRIDGE FASTRACK  
[FRRS TIGER LILLY

[CHEYENNE NAVIGATOR 505  
CHYN MS NAV-JO 539P  
DAM [73 ACR MS CUJO C466

[DC INTIMIDATOR  
[CHYN MS AVIGNON  
[BR/MCF CUJO X/06  
[73 ACR MS AVIGNON

✓ *Performance leader! Hard to fault this super good calf!*



## 68

### CHEYENNE JUSTICE 9/29G Polled

CALVED: 3-25-09	Reg.#	EPDs	
Birth Wt. / CE	88 / 1	BW	-1.2
Adj. 205 WW / Ratio	681 / 119	WW	23
Adj. 365 WW / Ratio	1142 / 104	YW	37
ADG	2.88	MILK	9

[PF INFINITE JUSTICE  
2TM UNLIMITED JUSTICE 503P  
SIRE [BCI 469 MISS LIMITED

[PF IMPRESSED  
[VCR MISS DUCHESS  
[SKYMONT P UNLIMITED 0115  
[BCR MISTA

[JES CORONA K106  
CHYN CORONAMISS 584  
DAM [CHYN TARGETTE 8124

[HCR CORONA  
[JES LITE GAL  
[EC BULLSEYE  
[PERFORMANCE + 434

✓ *Big & good.*



## 71

### CHYN Nf-CIGAR 9211 Polled

CALVED: 4-15-09	Reg.#	EPDs	
Birth Wt. / CE	89 / 1	BW	1.7
Adj. 205 WW / Ratio	598 / 105	WW	33
Adj. 365 WW / Ratio	1166 / 106	YW	42
ADG	3.55	MILK	10

[2TM UNLIMITED CIGAR  
CHYN NORBERT'S FINALE 6157P  
SIRE [CHYN 1945'S MS BILL

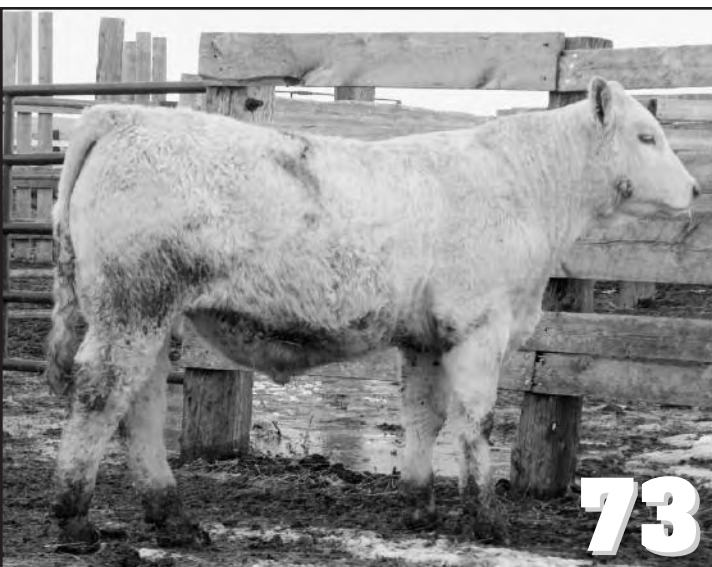
[LHD CIGAR E46  
[BCI MISS LIMITED  
[HF PASTOR BILL 007  
[TRASK'S MS ST DUKE 194

[2TM CIGAR 406P  
CHEYENNE MS CIG 6X/14  
DAM [CHEYENNE LADY 207

[LHD CIGAR E46  
[FRRS TIGER LILLY  
[TRASK MR AVIGNON 3804  
[CHEYENNE MS ROCKY

✓ *Good, thick calf!*

# YEARLING BULLS



## **73** CHEYENNE JUSTICE 9/26G POLLED

CALVED: 3-23-09	Reg.#	EPDs	
Birth Wt. / CE	106 / 1	BW	2.9
Adj. 205 WW / Ratio	637 / 112	WW	38
Adj. 365 WW / Ratio	1233 / 112	YW	52
ADG	3.73	MILK	10

[PF INFINITE JUSTICE  
2TM UNLIMITED JUSTICE 503P  
SIRE [BCI 469 MISS LIMITED

[PF IMPRESSED  
[VCR MISS DUCHESS  
[SKYMONT P UNLIMITED 0115  
[BCR MISTA

[SCHURRTOP ML 6056  
CHYN MS SCHURR 122P  
DAM [U CROSS MS MAC 5204

[DC INTIMIDATOR  
[LHD MS PERFECTION  
[TRASK MR MAC 2517  
[TRASK'S MS MAC

✓ *Out of a cow that always raises a big one! This guy started a little big, too, but should be fine on mature cows.*



## **74** CHYN PRO-WIND 9164 POLLED

CALVED: 4-7-09	Reg.#	EPDs	
Birth Wt. / CE	93 / 1	BW	1.0
Adj. 205 WW / Ratio	595 / 104	WW	24
Adj. 365 WW / Ratio	1078 / 98	YW	31
ADG	3.02	MILK	5

[THREE TREES WIND 0383  
2TM INFINITE WIND 604P  
SIRE [2TM MS UNLIMITED 1001

[LT WYOMING WIND  
[THREE TREES NANCY  
[PF INFINITE JUSTICE  
[BCI MISS LIMITED

[MCF ORVAN  
73 ACR MS PROSPECTOR CX36  
DAM [73 MS LACEY

[BR PROSPECTOR  
[MCF CUJETTE  
[BCC LACEY'S 562  
[RIVERWOOD ELVIRA

✓ *I really like this curly guy! His poor ol' 16-year-old mom was lucky to survive the spring, let alone raise him!*

## **75** CHYN 503's NORB 946 POLLED

CALVED: 3-18-09	Reg.#	EPDs	
Birth Wt. / CE	92 / 1	BW	0.6
Adj. 205 WW / Ratio	619 / 108	WW	34
Adj. 365 WW / Ratio	1161 / 106	YW	45
ADG	3.39	MILK	9

[PF INFINITE JUSTICE  
2TM UNLIMITED JUSTICE 503P  
SIRE [BCI 469 MISS LIMITED

[PF IMPRESSED  
[VCR MISS DUCHESS  
[SKYMONT P UNLIMITED 0115  
[BCR MISTA

[2TM UNLIMITED CIGAR  
CHYN MS NORBERT 501P  
DAM [CHYN CORONETTE 305

[LHD CIGAR  
[BCI MISS LIMITED  
[JES CORONA K106  
[CHYN MS OSCAR

✓ *Always a favorite! Long, thick, deep & quiet like his sire and dam!*

## **76** CHYN NOR-WIND 9130 POLLED

CALVED: 4-1-09	Reg.#	EPDs	
Birth Wt. / CE	88 / 1	BW	0.1
Adj. 205 WW / Ratio	589 / 103	WW	24
Adj. 365 WW / Ratio	1165 / 106	YW	43
ADG	3.60	MILK	6

[THREE TREES WIND 0383  
2TM INFINITE WIND 604P  
SIRE [2TM MS UNLIMITED 1001

[LT WYOMING WIND  
[THREE TREES NANCY  
[PF INFINITE JUSTICE  
[BCI MISS LIMITED

[2TM UNLIMITED CIGAR  
CHYN MISS NORB 505P  
DAM [CHYN SANDY BEE 340

[LHD CIGAR E46  
[BCI MISS LIMITED  
[CHEYENNE SANDHILLER  
[CHEYENNE TARGETTE

✓ *Out of an excellent Norbert daughter. Good calf!*

# YEARLING BULLS

## **77** CHEYENNE WIND 9/86-0 POLLED

CALVED: 3-13-09	Reg.#	EPDs	
Birth Wt. / CE	85 / 1	BW	-1.8
Adj. 205 WW / Ratio	535 / 94	WW	13
Adj. 365 WW / Ratio	1140 / 104	YW	25
ADG	3.78	MILK	5

[LT WYOMING WIND  
EC BIG WIND 873P  
SIRE [BOW MS PERFORMA

[SCHURRTOP 5627  
[LT CHAP'S LADY  
[VCR MR PERFORMER  
[BOW MS MORE

[CHEYENNE TARGET 8123  
CHYN TARGETTE T169D  
DAM [73 ACR TODD DY 145

[EC BULLSEYE  
[WCR MISS MAC  
[73 ACR ANTIETAM  
[73 ACR CUJO'S DENISE

✓ This bull made up a lot of ground on feed! His 3-year-old dam was quite thin this spring.



## **78** CHEYENNE EASY 9/21B POLLED

CALVED: 4-12-09	Reg.#	EPDs	
Birth Wt. / CE	84 / 1	BW	-2.0
Adj. 205 WW / Ratio	566 / 99	WW	22
Adj. 365 WW / Ratio	1134 / 103	YW	32
ADG	3.55	MILK	2

[PF INFINITE JUSTICE  
2TM TRIPLE EASE 405P  
SIRE [2TM MS FASTTRACK

[PF IMPRESSED  
[VCR MISS DUCHESS  
[BALDRIDGE FASTTRACK  
[FRRS TIGER LILLY

[JES CORONA K106  
CHYN COROMISS R43P  
DAM [73 ACR MS CUJO BT134

[HCR CORONA  
[JES LITE GAL  
[MCF CUJO X32  
[EB 73 MS CHABLIS

✓ Pedigree full of moderate-framed, easy-fleshing & easy-calving cattle

## **81** CHYN JUSTICE 9/19B POLLED

CALVED: 3-22-09	Reg.#	EPDs	
Birth Wt. / CE	90 / 1	BW	1.1
Adj. 205 WW / Ratio	635 / 111	WW	30
Adj. 365 WW / Ratio	1130 / 103	YW	38
ADG	3.08	MILK	4

[PF INFINITE JUSTICE  
2TM UNLIMITED JUSTICE 503P  
SIRE [BCI 469 MISS LIMITED

[PF IMPRESSED  
[VCR MISS DUCHESS  
[SKYMONT P UNLIMITED 0115  
[BCR MISTA

[2TM CIGAR 406  
CHEYENNE MS CIG R6P  
DAM [U-CROSS MAC-A-DUKE 8413

[LHD CIGAR E46  
[FRRS MISS FERRIS  
[U CROSS MR MAC 2605  
[TRASK'S MS ST DUKE 194

✓ Big, thick, deep calf!

## **82** CHYN NOR-COR 9/44G POLLED

CALVED: 3-28-09	Reg.#	EPDs	
Birth Wt. / CE	95 / 1	BW	1.5
Adj. 205 WW / Ratio	585 / 102	WW	28
Adj. 365 WW / Ratio	1125 / 102	YW	39
ADG	3.38	MILK	6

[2TM UNLIMITED CIGAR  
CHYN NORBERT'S FINALE 6157P  
SIRE [CHYN 1945'S MS BILL

[LHD CIGAR E46  
[BCI MISS LIMITED  
[HF PASTOR BILL 007  
[TRASK'S MS ST DUKE 194

[JES CORONA K106  
CHYN CORONETTE 6X12P  
DAM [CHYN MS AVI-BILL

[HCR CORONA  
[JES LITE GAL  
[HF PASTOR BILL 007  
[CHYN MS AVIGNON



# YEARLING BULLS

## **83 CHYN DOUBLE-NORB 9/28G** **POLLED**

CALVED: 3-25-09	Reg.#	EPDs	
Birth Wt. / CE	87 / 1	BW	0.7
Adj. 205 WW / Ratio	622/ 109	WW	36
Adj. 365 WW / Ratio	1163/ 106	YW	51
ADG	3.38	MILK	10

[2TM UNLIMITED CIGAR  
CHYN NORBERT'S FINALE 6157P  
SIRE [CHYN 1945'S MS BILL  
[LHD CIGAR E46  
[BCI MISS LIMITED  
[HF PASTOR BILL 007  
[TRASK'S MS ST DUKE 194

[2TM UNLIMITED CIGAR  
CHYN NORBETTE 508P  
DAM [CHEYENNE MS BILL 323  
[LHD CIGAR E46  
[BCI MISS LIMITED  
[HF PASTOR BILL 007  
[CHEYENNE MS AVIGATOR

✓ *Long calf, really good! The calves out of NF bred to his half-sisters turned out great.*



## **84 CHYN WIND 9225** **POLLED**

CALVED: 4-21-09	Reg.#	EPDs	
Birth Wt. / CE	77 / 1	BW	-2.6
Adj. 205 WW / Ratio	640/ 112	WW	15
Adj. 365 WW / Ratio	1101 / 100	YW	22
ADG	2.88	MILK	5

[LT WYOMING WIND  
EC BIG WIND 873P  
SIRE [BOW MS PERFORMA  
[SCHURRTOP 5627  
[LT CHAP'S LADY  
[VCR MR PERFORMER  
[BOW MS MORE

[2TM UNLIMITED CIGAR  
CHYN MISS NORB 5/X11P  
DAM [CHYN MISS RF/85  
[LHD CIGAR  
[BCI MISS LIMITED  
[HF PASTOR BILL 007  
[CHYN MS RF

✓ *Excellent 7/8 blood bull that is sure easy to look at!*

## **85 CHEYENNE WIND** **9/37W-Tw POLLED**


CALVED: 4-10-09	Reg.#	EPDs	
Birth Wt. / CE	69 / 1	BW	-1.8
Adj. 205 WW / Ratio	564/ 99	WW	13
Adj. 365 WW / Ratio	1172/ 106	YW	20
ADG	3.80	MILK	4

[LT WYOMING WIND  
EC BIG WIND 873P  
SIRE [BOW MS PERFORMA  
[SCHURRTOP 5627  
[LT CHAP'S LADY  
[VCR MR PERFORMER  
[BOW MS MORE

[2TM UNLIMITED CIGAR  
CHYN MS 503 795P  
DAM [CHYN SAND-AVI N9P  
[LHD CIGAR E46  
[BCI MISS LIMITED 6075  
[CHYN SANDHILLER  
[CHYN MS AVIGNON

✓ *Twin calf - very good gain!*


# YEARLING BULLS

 <b>86</b>	<b>CHYN Jus-Cor 9/94-0</b>	<b>POLLED</b>
CALVED: 3-14-09	Reg.#	EPDs
Birth Wt. / CE	90 / 1	BW 1.2
Adj. 205 WW / Ratio	624/ 109	WW 26
Adj. 365 WW / Ratio	1125/ 102	YW 33
ADG	3.13	MILK 2

[PF INFINITE JUSTICE] [PF IMPRESSED]  
**2TM UNLIMITED JUSTICE 503P** [VCR MISS DUCHESS]  
**SIRE** [BCI 469 MISS LIMITED] [SKYMONT P UNLIMITED 0115]  
[BCR MISTA]

[JES CORONA K106] [HCR CORONA 2015]  
**CHYN MISS CORONA 244P** [JES LITE GAL]  
**DAM** [CHYN MISS NAVIDUKE] [CHEYENNE NAVIGATOR]  
[TRASK'S MS ST DUKE 194]

✓ *Nice Justice-Corona cross!*

 <b>87</b>	<b>2TM Movin On 936</b>	<b>POLLED</b>
CALVED: 3-25-09	Reg.#	EPDs
Birth Wt. / CE	89 / 1	BW 1.3
Adj. 205 WW / Ratio	662/ 116	WW 27
Adj. 365 WW / Ratio	1054/ 96	YW 46
ADG	2.45	MILK 6

[KEY'S MCTENDER] [KEY'S MCHENRY]  
**2TM-KEYS MOVIN ON 5T** [KEY'S ABE]  
**SIRE** [MISS KEY ROCKET] [KEYS PLD NAVIGATOR]  
[MISS ROCKET]

[2TM CIGAR HOODOO] [LHD CIGAR E46]  
**2TM MS UNLIMITED 201** [MISS HOODOO BANJO]  
**DAM** [2TM MISS CIGAR 228] [LHD CIGAR E46]  
[BCI MISS LIMITED]

✓ *Another nice calf from Ted by Movin On. Nice profile on this good bull. Very docile. (Note: These calves from Ted Morgan were on feed 21 days less than ours.)*

## TERMS & CONDITIONS

**TERMS:** Terms of the sale are cash or check payable to Philip Livestock Auction. All settlements must be made with the clerks of the sale before any cattle will be released.

**BIDS:** Every animal is to be sold and will be sold. No by-bidding is permitted. The highest bidder is the buyer.

**DISPUTES:** The auctioneer will have the right to settle any disputes that may arise and his decision in such matters is final.

**ANNOUNCEMENTS:** Errors discovered in the catalog will be corrected by announcements from the auction stand at sale time and such announcements will take precedence over printed material.

**REGISTRATION CERTIFICATES:** All bulls are registered or are eligible to be registered with the AICA and will be transferred upon request.

**BREEDER'S GUARANTEE:** Our customers' satisfaction with our cattle is important to us; please call if problems of any kind occur with your purchase. **BULLS ARE GUARANTEED FOR 1 FULL YEAR!**

**BREEDING GUARANTEE:** 100%. Should a bull fail to pass a semen test, full credit or a replacement will be issued.

**PERMANENT INJURY GUARANTEE:** Purchase price, minus salvage value, prorated usage fee 'til injury.

**DEATH GUARANTEE:** 50% credit or option of replacement bull. In event of injury or death, we offer free lease of a quality replacement bull for the remainder of the breeding season.

**HEALTH:** Bulls have received all shots and boosters for blackleg, foot rot and respiratory diseases and have been poured and wormed.

**ACCIDENTS & LIABILITIES:** All persons attend the sale at their own risk and neither Cheyenne Charolais, nor Philip Livestock assumes any liability in case of accident or loss of property.

**MAIL BIDS:** Bidders unable to be present may send their bids and instructions to Cheyenne Charolais, the auctioneer, or any of the sale representatives. Phone bids will be accepted on sale day: **(605) 859-2577**. Bidders may also pre-register to bid online at DVAUCTION!

**THANK YOU FOR ATTENDING OUR SALE!!**  
**Joel Deering & family**

# DEERING'S CHEYENNE CHAROLAIS

## Cattle with a purpose

by Slim McNaught

In the early 1900s, Joel Steven Deering's great-grandfather, C. August "Gus" Deering, homesteaded 160 acres ten miles north of Wasta, South Dakota. About that time, Joel's other great-grandfather, Joe Meiners, homesteaded four miles south of Wasta at what is now known as the Soderquist Ranch. Joel was raised at this location and calls it the "home place". In a rare situation, this has resulted in the Deering and Meiners homesteads both being operated for 100-plus continuous years by family and today operated by the great-grandson of both original homesteaders. What a heritage. He lives here with his four kids, Cheyenne, Autumn, John Wayne and Sheridan.

Joel Deering got his start in the cattle business with a calf his grand father gave him when he was five years old. By the time he graduated from high school in 1987 he was in the business full time. Since that time, Joel has expanded and improved his J Diamond brand until he now operates a 300 head purebred Charolais operation, plus a commercial herd. In the spring of 2008, he sold this commercial herd down to 100 head, in a conservative effort to recover graze which had been depleted by several years of drought. This foresight shows. When we traversed this graze land at the time of this interview the range appeared in excellent condition.

In his effort to develop bulls that would work in his commercial operation he started creating a Cheyenne Charolais by raising his own bulls. It took hard work and meticulous record keeping to develop the image Joel wanted. His first sires included Avignon FR31, Intimidator, and Duke 261. These sires, along with females purchased from Double Hook, U-Cross, and Wienk, gave him the bloodlines he needed to accomplish his goals. After seriously focusing on genetics, he has developed a herd of young cows that is bred the way he wants them to be. Joel also found that as his cow herd improved, so did the quality and disposition of the bulls. He focused on calving ease, conformation, and disposition. He strives to produce bulls that will work for calving in large open pastures without much supervision but will also work for herds calved close in where they are

unwatched regularly. His goal is to produce a bull that has the Cheyenne Charolais look, as he describes it, long, smooth head and shoulders, and not too much bone. With dams such as Cheyenne Miss Sandhillier 340P and sires like 2TM Unlimited Justice 503P, he is reaching that goal.

Joel attributes disposition improvement to the herd sires that carry the "2TM" prefix, coming from the Ted Morgan herd at Greeley, Colorado. They have speeded up progress in the breeding program with the "Norbert" daughters and the Cigar 406 and Triple Ease daughters. Joel says they are some of the best quality cows anywhere and thinks the daughters of these bulls will make a major impact in the breed, "They're that good". He worked very hard to create, in his words, a "kinder, gentler" Charolais bull, culling for disposition not only in the bulls but in his cow herd as well. Joel says "I don't want a bull carrying a big 'J Diamond' causing problems for you". Joel pointed out that their bulls have always carried the genetics needed to top the market with feeder calves.

Cheyenne Charolais offers a DNA sample collection at

the time of semen testing so later on the buyer can determine if one of those bulls are causing calving or other problems. This saves handling the bull again. The bulls are guaranteed one full year from the time of purchase. Their last sale held February 9, 2009 at Philip Livestock Auction in Philip, South Dakota, consisted of 80 yearling and two-year-old bulls. At the sale they offer a volume discount, the high volume buyer averages the individual purchase price and takes off the price of one bull. Cheyenne Charolais also presents a Producer of the Year Award. In 2009, Ross and Janice Williams of Philip, South Dakota received this award.

Cheyenne Charolais foundation bloodlines consist of Prime Cut, Unlimited Ease, Corona, Dominion, Cigar; sires that produce moderate birth weight and excellent fleshing. All this crossed with Avignon, Duke 261, and a Cujo-based cowherd. With average weaning weights of 747 pounds on sale bulls, and individuals up to 861 pounds, the extra length, calving ease, and smooth heads and shoulders offer show quality eye appeal. The Cheyenne Charolais customer service policy is free keep at their risk until May 1, free delivery, semen tested, quick settlement of guarantee claims, and feeder cattle buyer referral service. With their guarantee covering injury, death and dissatisfaction for the first breeding season, customers are going away very satisfied with their selections.

Joel is also active in the R-CALF USA organization. His contribution at the February sale in Philip was a heifer out of the top end of their replacements, Cheyenne MS 503'S Kanjo 770 Polled, sired by 2TM Unlimited Justice 503 and the U-Cross MS Kan-Jo dam. About R-Calf Joel says, "I believe their cause is true to the commercial cattlemen of this country, whereas other organizations' interests may be divided".

For most of the year, the Cheyenne Charolais herd is kept at the Deering 73 Ranch, now owned by Mel and Dorothy Anderson. (Dorothy being the widow of David 'Bud' Deering, grandson of C.A. 'Gus' Deering). Joel does move the Charolais to the home place at calving time. He has found calving the Charolais and the commercial herd at the home place affords him better control. Calving at both places became a labor intensive operation with travel time between the two cutting down on the efficiency of his ranching operation and oversight of his cowherds. Joel doesn't plan to expand, but his goal is to market 100 bulls annually and eventually start a show string again. For now he's satisfied to be selling bulls to commercial operators that keep them happy. Evidence of that is the fact that his customers have sold some of the highest priced calves in dollars per head in the nation recently.

**Joel can be contacted at:**

**Joel Deering Cheyenne Charolais**  
**17969 Baseline Road, Wasta, SD 57791**  
**605-993-3151 • (cell) 605-381-0885**  
**[www.CheyenneCharolais.com](http://www.CheyenneCharolais.com)**  
**or [jdiamond1969@yahoo.com](mailto:jdiamond1969@yahoo.com)**

**Slim's Leather & Publishing**  
**P.O. Box 274, New Underwood, SD 57761**  
**[www.slimscustomleather.com](http://www.slimscustomleather.com)**  
**[www.myspace.com/slimthe1st](http://www.myspace.com/slimthe1st)**  
**[www.cowboypoetry.com/slimmcnaught.htm](http://www.cowboypoetry.com/slimmcnaught.htm)**  
*"keep a leg on each side and your mind in the middle  
and you'll never have to walk home"*