



DEERING'S HEYENNE HAROLAIS

"A Ranching Outfit Raising Charolais
Seedstock for Over 19 Years."

18th Annual Charolais Bull Sale Tuesday, February 8, 2011

12:00 p.m. MT

**at Philip Livestock Auction
Philip, SD**

Sale Day Phone: 605-859-2577

**SELLING: 70 Yearling
& 2-Year-Old Bulls**



- **Bulls Delivered & Kept Free until May 1st**
- **1st Breeding Season Guarantee**
- **R-CALF Roll-Over Auction**
- **Sale broadcast on DVAuction.com**

Featured Sires:

2TM Unlimited Justice 503

2TM Cigar 406 Polled

EC Big Wind

2TM Triple Ease

2TM Infinite Wind

2TM Infinite Justice 504 Polled

2TM Unlimited Justice 818

CC Alicia's Cigar 630

DEERING'S
HEYENNE
HAROLAIS

**Of Wasta,
South
Dakota**



www.CheyenneCharolais.com

Joel Deering • (605) 993-3151 or 381-0885
17960 Base Line Rd.
Wasta, SD 57791
jddiamond1969@yahoo.com
(e-mail checked daily)

SALE DATE AND TIME: Tuesday, February 8, 2011 – 12:00 Noon (MT)
SALE LOCATION: Philip Livestock Auction • Philip, South Dakota
SALE DAY PHONE: (605) 859-2577 or register to bid online at: DVAuction (*must also register with sale barn*)
AUCTIONEER: Seth Weishaar • (605) 892-2640
SALE REPRESENTATIVES: Don Ravellette • (605) 859-2516, *RPI Promotions*
Dan Piroutek • Milesville, SD • 544-3316, *Tristate Livestock News*
Jeff Kapperman • (605) 363-3620, *Tri-State Neighbor*
Kristian Rennert • 308-440-9463, *American International Charolais Association*

TERMS & CONDITIONS

TERMS: Terms of the sale are cash or check payable to Philip Livestock Auction. All settlements must be made with the clerks of the sale before any cattle will be released.

BIDS: Every animal is to be sold and will be sold. No by-bidding is permitted. The highest bidder is the buyer.

ABSENTEE BIDS: If you cannot be with us on sale day, we will handle any bids in confidence. Please contact Cheyenne Charolais, the auctioneer, or any of the sale representatives.

DISPUTES: The auctioneer will have the right to settle any disputes that may arise and his decision in such matters is final.

ANNOUNCEMENTS: Errors discovered in the catalog will be corrected by announcements from the auction stand at sale time and such announcements will take precedence over printed material.

REGISTRATION CERTIFICATES: All bulls are registered or are eligible to be registered with the AICA and will be transferred upon request.

BREEDER'S GUARANTEE: Our customers' satisfaction with our cattle is important to us; please call if problems of any kind occur with your purchase. **BULLS ARE GUARANTEED FOR 1 FULL YEAR!**

BREEDING GUARANTEE: 100%. Should a bull fail to pass a semen test, full credit or a replacement will be issued.

PERMANENT INJURY GUARANTEE: Purchase price, minus salvage value, prorated usage fee 'til injury.

DEATH GUARANTEE: 50% credit or option of replacement bull. In event of injury or death, we offer free lease of a quality replacement bull for the remainder of the breeding season.

HEALTH: Bulls have received all shots and boosters for blackleg, foot rot and respiratory diseases and have been poured and wormed.

VETERINARIAN: Dr. Jim McConaghy, Golden Veterinary Services, Wall, SD • (605) 279-2077

ACCIDENTS & LIABILITIES: All persons attend the sale at their own risk and neither Cheyenne Charolais, nor Philip Livestock assumes any liability in case of accident or loss of property.


MAIL BIDS: Bidders unable to be present may send their bids and instructions to Cheyenne Charolais, the auctioneer, or any of the sale representatives. Phone bids will be accepted on sale day: **(605) 859-2577**. Bidders may also pre-register to bid online at DVAUCTION!

DELIVERY: All bulls will be delivered free of charge after May 1st.

THANK YOU FOR ATTENDING OUR SALE!!
Joel Deering & family

A NOTE ABOUT R-CALF:

We will once again be donating to R-CALF USA and the S.D. Stockgrowers! This year, we will be donating a \$1000 bull sale credit immediately before the sale. Thank you in advance for your support!



Catalog Produced by:
Ravellette Publications, Inc.
221 E. Oak Street
P.O. Box 788
Philip, SD 57567-0788
Phone: (605) 859-2516 FAX: (605) 859-2410
e-mail: ads@pioneer-review.com
www.rpipromotions.com

Dear Cattlemen,

Welcome to our 18th annual bull sale! Thank you to all for your past purchases and support! What an exciting time to be in the cattle business! If you've had good Charolais cross calves to sell in the last few months, a premium has been paid-- either in extra pounds or extra dollars! These kinds of prices are long overdue and it is so nice to see the smiles in the country again!

We have an outstanding set of bulls this year, and once again everything from big-time performance to extreme calving ease for heifers is available!

Consistency in quality, performance and disposition will impress you in this set of bulls! I know you'll like what you see in this year's offering!

A couple of announcements... Our producer of the year is the Norval Millard family of Presho, SD. The Millard family has been with this program since the 90s, and often retain ownership and feed their own calves to market weight with outstanding results! They join our past three outstanding producers who have been rewarded for their loyalty and success with the choice of a \$2,000 travel agency credit or a \$2,000 credit at next year's sale. Thanks again! If any bull buyers past or present would like a free steak, please join us at The Steakhouse in Philip on Monday at 6 p.m. No reservations or notice are required, but please let me know beforehand if you need accommodations for the night.

I hope to visit with you all soon, and if you can't make it to Philip on the 8th of Feb. because of weather or other issues, please log in to DV Auction prior to the sale to get a password to this site. Also, you will need to contact the Barn as well to register for a number just like you would if there in person.

Thanks to you all again so much! We hope to see many of our old friends at the sale and also meet some new ones!

From all of us at Cheyenne Charolais

Sincerely,
Joel Deering

Past Producers of the Year: 2008 Kieth Smith Family -- Quinn, SD
2009 Gary Snook Family --- Midland, SD
2010 Ross Williams Family-- Philip, SD

LOT R-CALF:
\$1000 Bull Sale Credit--
proceeds to be donated to
R-CALF, good for purchase
at this year's sale.

REFERENCE SIRE

EA 2TM UNLIMITED JUSTICE 503 POLLED

Reg. M702591 Calved: 2-20-05 BW/CE: 91/1
ADJ WW: 878/113.3

{PF IMPRESSED 620 P ET {JWK IMPRESSIVE D040 ET
M613588 {VCR MISS DUCHESS 351 PLD {MISS KC CROCUS 904 POLL
{VCR SIR DUKE 914 PLD
{VCR MISS MAC'S PERFECTION
{SKYMONT P UNLIMITED 0115 {BCR POLLED UNLIMITED 003
BCI 469 MISS LIMITED PLD {P-3 LADY MONTE 8-5X
F699462 {BCR MISTA Z093 POLL {SIR HI GUY 7032
{MISS THAIDA 6657

2010 EPDs:	BW	WW	YW	MILK	MTNL
	1.7	24	37	9	21

✓ 503 has had a huge impact in our herd and has carried the standard for performance for the past 5 years. Lost due to injury in the fall of '09, this big, gentle guy will be missed!!



EB EC BIG WIND 873 POLLED

Reg. M705608 Calved: 3-6-05 BW/CE: 81/1
ADJ WW: 737/95.6 ADJ. 365 WW: 1247

{SCHURRTOP 5627 {WCR SIR DUKE 783
LT WYOMING WIND 4020 PLD {MISS SUGAR VALLEY 908
M411450 {LT CHAP'S LADY 2170P {LT UNLIMITED CHAPS 0109
{LT PRAIRIE MAIDEN 8095
{VCR MR PERFORMER 6102ET {HBR PERFORMANCE 932 P
BOW MS PERFORMA 873HPOLL {VCR MISS MAC IV 619
F900411 {BOW MS MORE 809X {DESIGNERS MORE 3169
{RJB LADY JANE 3109R

2010 EPDs:	BW	WW	YW	MILK	MTNL
	-2.4	10	19	1	6

✓ John Wayne's pick at the '06 Jamie Eggleston sale! We asked a lot of this guy and he delivered! A nearly perfect record of calving ease on heifers - pulls on PB heifers were rare; commercial heifers were no pulls at all. Birth to weaning spread on calves has been outstanding and I expect his weaning & yearling numbers will go up. Nice set of sons in this offering, most out of two-year-old heifers.



REFERENCE SIREs



2TM TRIPLE EASE 405 POLLED

Reg. M682703 Calved: 3-3-04 BW/CE: 89/1
ADJ WW: 875/10.5

{PF IMPRESSED 620 P ET
PFINFINITEJUSTICE1001PET
M613588 {VCR MISS DUCHESS 351 PLD

{JWK IMPRESSIVE D040 ET
{MISS KC CROCUS 904 POLL
{VCR SIR DUKE 914 PLD
{VCR MISS MAC'S PERFECTION
{LT UNLIMITED EASE 9108
{BALDRIDGE SWEETHEART 53D
{FREDS HUSKER 7701
{FRRS MISS FERRIS 709G P

{BALDRIDGE FASTTRACK 82F
2TM MS FASTTRACK 201 PLD
F954654 {FRRS TIGER LILLY PLD

2010 EPDs:	BW	WW	YW	MILK	MTNL
	1.6	26	38	5	18

✓ One of the "Justice Brothers". Good disposition, neat-headed bull that sires same. Several outstanding sons sell!



2TM INFINITE JUSTICE 504 POLLED

Reg. M702590 Calved: 2-22-05 BW/CE: 84/1
ADJ WW: 842/108.7

{PF IMPRESSED 620 P ET
PF INFINITE JUSTICE 1001 P ET
M613588 {VCR MISS DUCHESS 351 PLD

{JWK IMPRESSIVE D040 ET
{MISS KC CROCUS 904 POLL
{VCR SIR DUKE 914 PLD
{VCR MISS MAC'S PERFECTION
{SPARROWS ALLIANCE 513G
{KEYS WK FRED'S LADY 938Y
{SCHURRTOP DOMINION PLD
{ASTEL ZC121

{SCC CASCADE J004 P ET
2TM MS CASCADE 353 P
F978393 {MS HOODOO Z7096 DOMINION

2010 EPDs:	BW	WW	YW	MILK	MTNL
	2.2	29	40	-4	10

✓ We look for big things from this guy in the future, and sure like what I see so far. Big group of sons in the offering! Denver Class Winner, NWSS '06!



2TM INFINITE WIND 604

Reg. M722471 Calved: 3-2-06 BW/CE: 87/1
ADJ WW: 844

{LT WYOMING WIND 4020 PLD
THREE TREES WIND 0383 ET
M637722 {THREE TREES NANCY 8121ET

{SCHURRTOP 5627
{LT CHAP'S LADY 2170P
{SKYMONT EASE 2078
{WCR MISS MAC IV 5138 ET
{PF IMPRESSED 620 P ET
{VCR MISS DUCHESS 351 PLD
{SKYMONT P UNLIMITED 0115
{MISS THAIDA 9912

{PFINFINITEJUSTICE1001PET
2TM MS UNLIMITED1001-421
F999323 {BCI MISS LIMITED 6075PLD

2010 EPDs:	BW	WW	YW	MILK	MTNL
	-0.9	28	52	5	19

✓ Royally-bred and thick as you would want one! Out of a half-sister to "Norbert" (2TM Unlimited Cigar) and grandson of the awesome Batey 6075 cow. Look at his four great-grandfathers - Schurrtop 5627, Ease 2078, Impressed and Unlimited 0115; I can't imagine four more "rancher-friendly" bulls for calving ease plus growth.



CHYN NORBERT'S FINALE 6157 POLLED

Reg. Pending Calved: 5-17-06 BW/CE: 93/1
ADJ WW: 811/121 ADJ. 365: 1550/119 ADG: 4.62

{LHD CIGAR E46
2TM UNLIMITED CIGAR PLD
{BCI MISS LIMITED 6075

{LHD MR PERFECT Y416
{LHD MS CLASSIC BELL
{SKYMONT P UNLIMITED
{MISS THAIDA
{WCR PRIME CUT
{WAP LILAC
CHYN 1945'S MS BILL 4111P
{TRASK'S MS ST DUKE 1945
{TRASK'S MS AVIGNON

2008 EPDs:	BW	WW	YW	MILK	MTNL
	1.7	36	51	17	

✓ Limited service because of injury in '09 - was replaced by Cigar 406.



2TM Cigar 406 POLLED

Reg. M682703 Calved: 3-3-04 BW/CE: 89/1
ADJ WW: 875/10.5

{PF IMPRESSED 620 P ET
PFINFINITEJUSTICE1001PET
M613588 {VCR MISS DUCHESS 351 PLD

{JWK IMPRESSIVE D040 ET
{MISS KC CROCUS 904 POLL
{VCR SIR DUKE 914 PLD
{VCR MISS MAC'S PERFECTION
{LT UNLIMITED EASE 9108
{BALDRIDGE SWEETHEART 53D
{FREDS HUSKER 7701
{FRRS MISS FERRIS 709G P

{BALDRIDGE FASTTRACK 82F
2TM MS FASTTRACK 201 PLD
F954654 {FRRS TIGER LILLY PLD

2008 EPDs:	BW	WW	YW	MILK	MTNL
	0.4	29	50	6	21

✓ Oldest of the "Justice Brothers." Most of his kids were girls this year; must be a really good guy! Good disposition, neat-headed bull that sires same.



CC Alicia's Cigar 630 PLD

Reg. M740931 Calved: 10-20-2006 BW: 92
WW: 891

{LHD MR PERFECT Y416
LHD CIGAR E46
M434790 {LHD MS CLASSIC BELL X613

{WCR SIR PERFECTION 734
{LHD MS SHOWME OFF W159
{LHD MR BELLMARK R113
{OCR CLASSIC QUEEN 46N
{SCHURRTOP 5627
{LT CHAP'S LADY 2170P
{WCR SIR T 2254
{RAC ALICIA 3089 POLLEDET

{LT WYOMING WIND 4020 PLD
THREE TREES ALICIA 0030
F927466 {THREE TREES ALICIA308ET

2011 EPDs:	BW	WW	YW	MILK	MTNL
	2.3	28	48	5	19

✓ Powerful bull purchased from Coudrons! Several outstanding sons in the sale with excellent dispositions and outstanding performance!



2TM Unlimited Justice 818P

Reg. M759615 Calved: 3-5-2008 BW: 89 WW: 728

2011 EPDs:	BW	WW	YW	MILK	MTNL
	0.5	18	28	10	18

{PF IMPRESSED 620 P ET
PFINFINITEJUSTICE1001PET
M613588 {VCR MISS DUCHESS 351 PLD

{JWK IMPRESSIVE D040 ET
{MISS KC CROCUS 904 POLL
{VCR SIR DUKE 914 PLD
{VCR MISS MAC'S PERFECTION
{LHD MR PERFECT Y416
{LHD MS CLASSIC BELL X613
{SKYMONT P UNLIMITED 0115
{MISS THAIDA 9912

{LHD CIGAR E46
2TM MS CIGAR 228 PLD (*)
F954656 {BCI MISS LIMITED 6075PLD

✓ Purchased from Ted Morgan in '09 - he says is the best he's ever raised! Outstanding bull out of "Norbert's". Full sister by the great Justice! First sons sell!

Sire Abbreviations

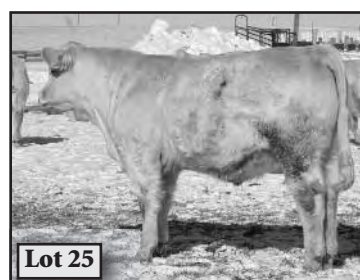
NF - Chyn Norbert's Finale 6157
503 - 2TM Unlimited Justice 503
406 - 2TM Cigar 406
Wind - EC Big Wind 873
T.E. - 2 TM Triple Ease 405
I.W. - 2TM Infinite Wind 604
A.C. - CC Alicia's Cigar 630
818 - 2TM Unlimited Justice 818
504 - 2TM Infinite Justice 504

MGS Abbreviations

659 - Chyn Sandhillier 659 (Chuckwagon)
Norb - 2TM Unlimited Cigar (Cigar)
6056 - Schurrtop ML 6056 (Intimidator)
Bill - HF Pastor Bill 007 (Prime Cut)
Osc - 73 ACR Oscar 683 (Oscar D413)
6G - EC Bullseye (Mongo)
NAV - Chyn Navigator 403 (Intimidator)
505 - Chyn Navigator 505 (Intimidator)
COR - JES Corona K106 (Corona)

Lot I.D.	H/P	Sire	Dam/MGS	Born	BW	Act. WW	Adj/Ratio WW	ADG	Adj. Ratio YW	EPD's		
										BW	WW	YW
1 0113	P	503	517/Norb	4-5-10	85	690	667/106	5.43	1535/128	.04	31	45
*AWESOME herd bull prospect!!												
2 63B	P	504	N60/9228	4-5-10	96	700	677/107	3.45	1229/102	1.3	30	41
*May be one of the most stylish calves we've ever raised!												
3 75B	D	NF	P29/505	4-9-10	94	715	700/111	3.26	1222/102	1.0	27	38
*Thick and nice!												
4 078	P	406	584/COR	3-26-10	89	724	672/107	3.44	1223/102	0.6	28	39
*Long, tall and good!												
5 040	P	A.C	228/Osc	3-23-10	99	680	626/100	4.64	1369/114	1.7	23	45
*Tremendous gain on this big calf!												
6 67B	P	503	122/6056	4-19-10	101	630	646/103	3.78	1252/104	2.3	26	35
*Lots of growth in this young calf!												
7 043	P	504	740/T.E.	3-24-10	81	690	665/106	3.71	1258/105	-0.6	25	38
* Big and thick!												
8 0148	P	503	615/Norb	4-14-10	109	640	652/103	4.71	1406/117	2.8	33	48
*Born unassisted out of 1300# 4yr. old. Tremendous gain, performance calf!												
9 0115	P	A.C	742/406	4-5-10	90	620	630/100	3.50	1190/99	1.1	25	42
*Linebred Cigar and is he ever thick and good! A favorite since he was born.												
10 091	P	406	746/504	3-29-10	96	630	624/99	3.43	1173/98	1.6	23	33
*Nice calf with an excellent haircoat. Super gentle!												
11 0105	P	406	502/Norb	4-3-10	81	645	620/99	3.86	1237/103	-0.9	29	40
*												
12 072	P	504	9203/6G	3-23-10	101	740	716/114	3.71	1310/109	1.9	27	35
*Big, powerful performance calf out of an outstanding 11-year-old cow.												
13 0139	P	A.C.	305/COR	4-8-10	95	690	676/107	3.43	1224/102	0.9	28	44
*Fancy as there is in the sale!												
14 034	P	A.C.	4103/Bill	3-21-10	98	650	594/94	3.71	1188/99	2.1	30	40
*Cigar x Prime Cut. Long and tall, performance pedigree!												
15 074	P	406	F14G/T.E.	3-26-10	88	750	697/111	3.57	1268/106	-0.1	32	41
*Big-butted and good! calving ease + performance.												
16 0130	D	503	P29/Bill	4-5-10	94	700	677/108	4.00	1317/110	1.4	24	39
*Outstanding calf!												
17 66B	P	503	P24/Bill	4-16-10	91	750	760/121	3.14	1263/105	1.7	28	42
* This bull has a lot of frame and will sire outstanding performance!												
18 0143	P	A.C.	714/COR	4-11-10	81	700	724/115	3.50	1284/107	0.7	27	36
* Note the low BW on this fancy calf!												
19 40B	P	818	622/Norb	3-19-10	106	747	687/109nc	3.33	1219/102	2.2	22	32
* Exceptional!												
20 0146	P	A.C	728/Wind	4-12-10	92	630	637/101	4.14	1300/108	0.9	23	29
*												
21 001	D	818	R35/505	3-6-10	90	670	590/94nc	3.86	1207/101	0.8	22	28
*Big and nice, extremely docile!												
22 0102	P	504	P117/Bill	4-1-10	96	640	608/97	4.14	1271/106	1.8	28	40
*Really good, out of an excellent cow!												
23 014	P	T.E.	271/Osc.	3-13-10	89	670	594/94nc	3.71	1188/99	-0.4	17	23
*Excellent bull for cows being bred for 2nd calf!												
24 081	D	406	R21/T.E.	3-26-10	92	675	628/100	3.71	1222/102	0.7	31	42
*												
25 039	P	A.C.	7104/T.E.	3-20-10	95	610	591/94	4.71	1345/112	1.2	33	45
*Awesome gain, excellent calf!												

Lot I.D.	H/P	Sire	Dam/MGS	Born	BW	Act. WW	Adj/Ratio WW	ADG	Adj. Ratio YW	EPD's BW	EPD's WW	EPD's YW
26 0749	P	503	232/OSC	4-14-10	97	690	693/110	3.71	1284/107	1.8	28	35
*												
27 71B	P	504	375/OSC	4-26-10	88	650	725/115	4.07	1376/115	0.7	30	41
*Real solid, young calf!												
28 035	P	504	0111/NAV	3-21-10	90	620	600/95	4.00	1240/103	1.1	25	36
*												
29 037	P	406	9202/NAV	3-21-10	92	660	637/101	3.43	1186/99	1.2	27	35
*Good calf, good hair!												
30 48G	P	818	0064/NAV	4-22-10	91	650	705/112	3.57	1276/106	1.0	20	29
*Really good!												
31 006	P	503	0104/OSC	3-14-10	96	685	645/102	3.21	1160/97	1.7	24	30
*												
32 42G	P	406	761/T.E.	4-27-10	92	640	710/113	3.36	1247/104	1.1	28	41
*												
33 086	P	Wind	7760/T.E.	3-30-10	86	560	564/90nc	3.57	1135/95	-1.3	15	22
*Excellent choice for young cows!												
34 053	P	I.W.	6117/406	3-21-10	85	600	558/89nc	2.86	1015/85	-0.8	18	22
*Also excellent choice for young cows!												
35 042	D	T.E.	9166/osc	3-23-10	84	555	546/87	3.93	1174/98	-1.0	23	29
*Smaller frame, excellent calving ease!												
36 73B	P	503	787/T.E.	5-10-10	82	600	708/112	3.57	1229/107	-0.5	32	43
*Young calf with good numbers!												
37 0153	P	A.C.	6X13/Bill	4-11-10	90	690	694/110	2.43	1083/90	0.8	30	49
*Excellent calf! Fought some sickness that hurt gain.												
38 0151	P	818	685/406	4-9-10	87	640	688/109nc	2.57	1099/92	0.7	19	29
*Nice calf - slow start post weaning. Thick & good!												
39 30G	P	406	9201/GG	5-14-10	94	555	675/107	3.64	1257/105	1.2	27	36
*Young calf - bred to grow!												
40 6149	P	503	6149/503	4-8-10	105	640	637/101	3.71	1231/103	2.6	25	39
*												
41 0104	D	503	74/ORV	3-31-10	86	625	629/100	3.93	1257/105	1.0	29	40
*												
42 064	P	T.E.	N9/659	3-26-10	97	635	592/94	3.79	1197/100	1.8	24	31
*												
43 0158	P	503	770/504	4-20-10	85	585	633/9100	4.64	1376/115	0.2	27	43
*Great combination of low BW & Performance!												
44 69B	P	I.W.	631/T.E.	5-12-10	81	500	585/93	3.50	1060/88	-1.7	16	22
*Calving ease and fancy!												
45 079	P	504	P22/659	3-28-10	90	685	642/102	4.29	1327/111	1.3	30	39
*Not many better!												
46 080	P	406	458/659	3-26-10	101	540	505/80	3.71	1099/92	2.2	22	29
*Dam does not milk well. Not too bad of a calf.												
47 073	P	504	RFR/T.E.	3-26-10	94	670	634/101	3.43	1183/99	1.6	27	34
*Fancy calf that will catch your eye! 1/4 Red Angus												
48 070	P	503	635/Norb	3-26-10	84	725	673/107	3.79	1278/107	-0.4	31	40
*Great calf! Bred and looks just like Lot 1!												
49 28G	P	I.W.	731/Wind	4-27-10	86	580	646/102	4.50	1366/114	-1.0	25	31
*Calving ease and performance. Double wind. NICE!												
50 0134	P	504	579/Norb	4-11-10	86	640	635/101	3.29	1160/97	0.2	30	36
*Long and smooth!												





Lot I.D.	H/P	Sire	Dam/MGS	Born	BW	Act. WW	Adj/Ratio WW	ADG	Adj. Ratio YW	EPD's		
										BW	WW	YW
51 023	P	Wind	258/6056	3-20-10	84	700	635/101nc	1.47	863/72	-1.6	17	23
*Good calf out of a good cow. Got sick, really affected gain!												
52 0150	D	406	5001/Norb	4/17/10	78	585	595/94	2.14	937/88	-0.9	21	25
*Light boned, would make a heifer bull!												
53 003	P	Wind	422/Bill	3-10-10	84	610	535/85nc	2.71	969/81	-1.0	16	21
*Good calving ease!												
54 0129	P	I.W.	796/Wind	4-8-10	88	605	622/99	2.71	1056/88	-0.2	14	20
*Thick and good. Lots of calving ease!												
55 075	P	T.E.	754/503	3-27-10	89	690	679/108	3.43	1227/102	0.5	27	33
*Nice calf - eye appeal and growth!												
56 059	P	Wind	537/Norb	3-24-10	92	645	596/95	3.07	1087/91	0.2	19	25
*Nice bull that would work well on young cows!												

Summer 2-Year-olds

These bulls were wintered as calves on light rations and were on grass this summer until December 10 when we started graining them. They are green but are really in ideal breeding condition!

Some of them "escaped" this summer, so all will be trich tested by Dr. McConaghy before delivery.

Cattlemen, help yourself to a good set of range bulls that will really go out and get the job done for you!

Lot I.D.	H/P	Sire	Dam/MGS	Born	BW	Adj. 205	Gain 12-10/1-10	Actual Weight	EPD's			
									BW	WW	YW	
57 9272	P	Wind	7117/TE	5-25-09	89	554	4.36	1225	-2.1	12	19	
*We used this bull on commercial heifers, moderate frame and good!												
58 05G	P	Wind	704/504	5-21-09	81	576	4.20	1200	-1.9	14	20	
*Could b used on heifers or young cows.												
59 9280	D	NF	337/Bill	6-5-09	96	654	4.41	1375	1.6	33	41	
*Big, solid range bull!												
60 60B	P	Wind	R28/Cor	7-11-09	80	571	3.98	1100	-2.6	11	16	
*Best heifer bull prospect in the sale!												
61 9262	P	T.E.	201/Cor	5-18-09	87	615	4.12	1230	-1.0	24	30	
*Thick bull, moderate and docile!												
63 9266	P	503	8221/NAV	5-23-09	90	646	4.31	1300	0.7	33	39	
*Long and really good!												
66 57B	P	503	0117/NAV	6-1-09	88	652	4.52	1235	1.1	29	42	
*Thick bull! Moderate framed and good!												
68 9260	P	Wind	721/T.E.	5-17-09	80	585	4.25	1250	-2.4	15	23	
*Excellent calving ease in a pretty fancy bull!												
70 9275	P	Wind	644/Norb	6-1-09	78	631	4.14	1270	-2.3	18	24	
*You'll like this guy!												
71 9290	P	504	111/NAV	6-30-09	89	625	4.09	1250	0.8	26	34	
*Slight red factor.												
72 9281	D	NF	8154/NAV	6-6-09	92	640	3.89	1280	1.4	28	42	
*Nice, thick range bull!												
74 9274	P	504	639/Norb	5-28-09	90	661	4.30	1230				
*My favorite of this group - he's good!												