



DEERING'S HEYENNE HAROLAIS

"Ranch-Raised, Rancher Approved"

20th Annual Charolais Bull Sale

Tuesday, April 16, 2013

12:00 p.m. MT

**at Philip Livestock Auction
Philip, SD**

Sale Day Phone: 605-859-2577

**SELLING: 50 Yearling
& 10 Two-Year-Old Bulls**

Featured Sires:

2TM Cigar 406 Polled

2TM Triple Ease

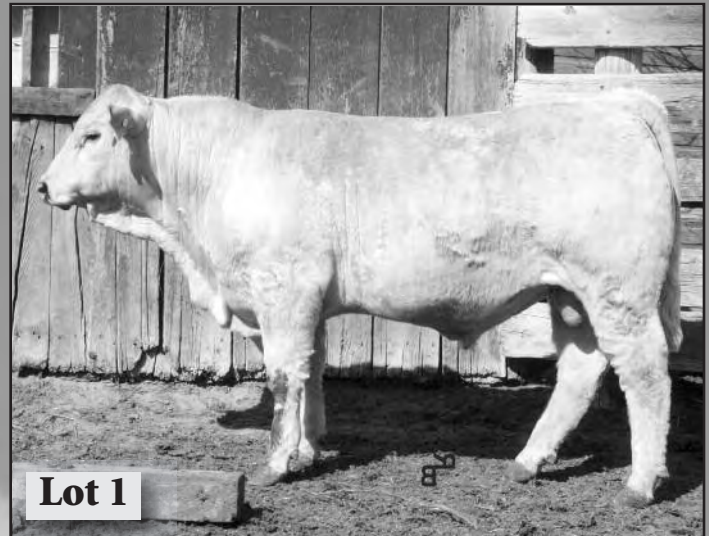
2TM Infinite Justice 504 Polled

2TM Unlimited Justice 818

CC Alicia's Cigar 630

WDZ Wind 016P

- **Bulls Delivered & Kept Free
until May 15th**
- **1st Breeding Season
Guarantee**
- **Sale broadcast on
DVAuction.com**



DEERING'S HEYENNE HAROLAIS

**Of Wasta,
South
Dakota**

"Home of the 2012 & 2013 BHSS Grand Champion Bulls"

SALE DATE AND TIME: Tuesday, April 16, 2013 – 12:00 Noon (MT)
SALE LOCATION: Philip Livestock Auction • Philip, South Dakota
SALE DAY PHONE: (605) 859-2577 or register to bid online at: DVAuction
(must also register with sale barn -- www.philiplivestock.com)
AUCTIONEER: Lynn Weishaar • Reva, SD • (605) 866-4670
SALE REPRESENTATIVES: Don Ravellette • (605) 859-2516, *RPI Promotions*
Dan Piroutek • Milesville, SD • 544-3316, *Tristate Livestock News*
Jeff Kapperman • (605) 363-3620, *Tri-State Neighbor*
Colt Keffer • 402-616-6658, *American International Charolais Association*

TERMS & CONDITIONS

TERMS: Terms of the sale are cash or check payable to Philip Livestock Auction. All settlements must be made with the clerks of the sale before any cattle will be released.

BIDS: Every animal is to be sold and will be sold. No by-bidding is permitted. The highest bidder is the buyer.

ABSENTEE BIDS: If you cannot be with us on sale day, we will handle any bids in confidence. Please contact Cheyenne Charolais, the auctioneer, or any of the sale representatives.

DISPUTES: The auctioneer will have the right to settle any disputes that may arise and his decision in such matters is final.

ANNOUNCEMENTS: Errors discovered in the catalog will be corrected by announcements from the auction stand at sale time and such announcements will take precedence over printed material.

REGISTRATION CERTIFICATES: All bulls are registered or are eligible to be registered with the AICA and will be transferred upon request.

BREEDER'S GUARANTEE: Our customers' satisfaction with our cattle is important to us; please call if problems of any kind occur with your purchase. **BULLS ARE GUARANTEED FOR 1 FULL YEAR!**

BREEDING GUARANTEE: 100%. Should a bull fail to pass a semen test, full credit or a replacement will be issued.

PERMANENT INJURY GUARANTEE: Purchase price, minus salvage value, prorate usage fee 'til injury.

DEATH GUARANTEE: 50% credit or option of replacement bull. In event of injury or death, we offer free lease of a quality replacement bull for the remainder of the breeding season.

HEALTH: Bulls have received all shots and boosters for blackleg, foot rot and respiratory diseases and have been poured and wormed.

VETERINARIAN: Dr. Jim McConaghy, Golden Veterinary Services, Wall, SD • (605) 279-2077

ACCIDENTS & LIABILITIES: All persons attend the sale at their own risk and neither Cheyenne Charolais, nor Philip Livestock assumes any liability in case of accident or loss of property.

MAIL BIDS: Bidders unable to be present may send their bids and instructions to Cheyenne Charolais, the auctioneer, or any of the sale representatives. Phone bids will be accepted on sale day: **(605) 859-2577**. Bidders may also pre-register to bid online at DVAUCTION!

DELIVERY: All bulls will be delivered free of charge after May 15th.



Catalog Produced by:
Ravellette Publications, Inc.
221 E. Oak Street
P.O. Box 788
Philip, SD 57567-0788
Phone: (605) 859-2516 FAX: (605) 859-2410
e-mail: ads@pioneer-review.com
www.rpipromotions.com

Welcome Cattlemen, to our 20th Annual Bull Sale!

Thank you for your past support and I hope there are mud puddles in front of your mailbox when you receive this!

I also hope everyone is in the midst of a successful calving season as we are. The dry weather has presented its share of challenges around here, as we moved our entire cowherd to Harrold, SD, over the winter to the Krull ranch for four months – and brought the girls home the end of February. We have received some moisture in March, at least enough to green up a little grass.

Whether it will be your first trip to Philip for our sale or your 20th, I am sure you will like what you see in this set of bulls. As always, our goal is to produce sound, consistent, easy calving bulls that produce high-performing crossbred calves for the commercial cowman.

As I see the results of our customers' programs in the fall sale listings, I know we are and continue to be on the right track.

We welcome once again a featured guest consignment from Morgan Charolais of Allen, CO. Ted's herd bulls have been the cornerstone of our program for many years and his consignments to our sale this year are certainly outstanding. His cowherd has been here as well since May 2012 and his bulls were raised, fed and ratioed with mine. Same guarantee and terms apply to his bulls as with mine.



**2TM Revelation
2013 Grand Champion Charolais Bull**

keep the bulls 'til May 15th or haul your bull home sale day and take an additional \$100 off purchase per bull. If weather or other issues prevent you from attending on the 16th, please check with the sale barn about registering with DV Auction, as it will be broadcast live on the Internet as well.

Also, if anyone needs "warranty work" on last year's purchases, please let me know if I do not contact you first. If you are in Philip on Monday night the 15th, stop at The Steakhouse about 7 o'clock and I will buy you dinner and a beverage!

Thanks again for your consideration of our program and we look forward to visiting with old friends and meeting new ones on the 16th!

Sincerely, Joel Deering



Branding Break, 2012

We have added four exciting new herd bulls the last couple of years, including the BHSS Grand Champion bulls from last year and 2013 ... very excited about what the results will be from these great additions. The calves on the ground so far in 2013 look outstanding.

Our producer of the year for 2013 is the Keith Reuer family of Reliance, SD. Keith started buying bulls from us just a few years ago, but he has bought a LOT of them and reports great results. He will receive a \$2000 credit towards purchase either this year or 2014.

A few notes ... 5% discount on purchases of 5 or more – buy 10 and get one free, or a 10% discount, however you would like to look at it. We will

Past Producers of the Year:

2008	Kieth Smith, Cottonwood
2009	Gary Snook, Midland
2010	Ross Williams, Philip
2011	Norval Millard, Presho
2012	Matt Brothers, Kenny & Stanley, Elm Springs
2013	Keith Reuer, Reliance

REFERENCE SIRES



2TM TRIPLE EASE 405 POLLED

Reg. M682703 Calved: 3-3-04 BW/CE: 89/1
ADJ WW: 875 Ratio: 110 # Cont.: 5

{Pf IMPRESSED 620 P ET} {JWK IMPRESSIVE D040 ET}
PF INFINITE JUSTICE 1001PET {Miss Kc CROCUS 904 POLL
M613588 {VCR Miss DUCHESS 351 PLD} {VCR Sir DUKE 914 PLD
{VCR Miss MAC'S PERFECTION}
{BALDRIDGE FASTTRACK 82F} {LT UNLIMITED EASE 9108
2TM MS FASTTRACK 201 PLD {BALDRIDGE SWEETHEART 53D
F954654 {FRRS TIGER LILLY PLD} {FREDS HUSKER 7701
{FRRS MISS FERRIS 709G P}

2013 EPDs:	BW	WW	YW	MILK	MTNL
	1.4	25	36	3	15

✓ One of the "Justice Brothers". Good disposition, neat-headed bull that sires same. Style plus calving ease!



2TM Cigar 406 POLLED

Reg. M683725 Calved: 3-3-04 BW/CE: 90
ADJ WW: 849 Ratio: 107 # Cont.: 8

{LHD Mr PERFECT Y416} {WCR Sir PERFECTION 734
LHD CIGAR E46 {LHD Ms SHOWME OFF W159
M434790 {LHD Mr BELLMARK R113
{OCR CLASSIC QUEEN 46N}
{FREDS HUSKER 7701} {LT WYOMING WIND 4020 PLD
FRRS TIGER LILLY PLD {FREDS MISS TOMY 2143
F873803 {ASC ELIMINATOR 032
{FRRS MISS FERRIS 709G P} {MISS FERRIS 303C}

2013 EPDs:	BW	WW	YW	MILK	MTNL
	1.0	29	48	4	18

✓ Oldest of the "Justice Brothers." Good disposition, neat-headed bull that sires same. Sire of (2) two-year-old lots.



2TM Unlimited Justice 818P

Reg. M759615 Calved: 3-5-2008 BW: 89
WW: 728 Ratio: 106 # Cont.: 8

{Pf IMPRESSED 620 P ET} {JWK IMPRESSIVE D040 ET
PF INFINITE JUSTICE 1001PET {Miss Kc CROCUS 904 POLL
M613588 {VCR Miss DUCHESS 351 PLD} {VCR Sir DUKE 914 PLD
{VCR Miss MAC'S PERFECTION}
{LHD CIGAR E46} {LHD Mr PERFECT Y416
2TM MS CIGAR 228 PLD (*) {LHD Ms CLASSIC BELL X613
F954656 {BCI MISS LIMITED 6075PLD} {SKYMONT P UNLIMITED 0115
{MISS THAIDA 9912}

2013 EPDs:	BW	WW	YW	MILK	MTNL
	0.4	19	29	8	17

✓ Purchased from Ted Morgan in '09 – he says it's the best he's ever raised! Outstanding bull out of "Norbert's". Full sister by the great Justice!



2TM INFINITE JUSTICE 504 POLLED

Reg. M702590 Calved: 2-22-05 BW/CE: 84/1
ADJ WW: 842 Ratio: 108 # Cont.: 10

{Pf IMPRESSED 620 P ET} {JWK IMPRESSIVE D040 ET
PF INFINITE JUSTICE 1001 P ET {Miss Kc CROCUS 904 POLL
M613588 {VCR Miss DUCHESS 351 PLD} {VCR Sir DUKE 914 PLD
{VCR Miss MAC'S PERFECTION}
{SCC CASCADE J004 P ET} {SPARROWS ALLIANCE 513G
2TM MS CASCADE 353 P {KEYS Wk FREDS LADY 938Y
F978393 {Ms HOODOO Z7096 DOMINION} {SCHURRTOP DOMINION PLD
{ASTEL Zc121}

2013 EPDs:	BW	WW	YW	MILK	MTNL
	2.1	28	38	-6	8

✓ Big group of sons in the offering! Denver Class Winner, NWSS '06! Long, smooth – excellent performance! Lots of longevity – used 'til 7 years old!



CC Alicia's Cigar 630 PLD

Reg. M740931 Calved: 10-20-2006 BW: 92
WW: 891

{LHD Mr PERFECT Y416} {WCR Sir PERFECTION 734
LHD CIGAR E46 {LHD Ms SHOWME OFF W159
M434790 {LHD Mr BELLMARK R113
{OCR CLASSIC QUEEN 46N}
{LT WYOMING WIND 4020 PLD} {SCHURRTOP 5627
THREE TREES ALICIA 0030 {LT CHAP'S LADY 2170P
F927466 {THREE TREES ALICIA B308ET} {WCR Sir T 2254
{RAC ALICIA 3089 POLLEDET}

2013 EPDs:	BW	WW	YW	MILK	MTNL
	2.1	29	49	6	21

✓ Powerful bull purchased from Coudrons! Several outstanding sons in the sale with excellent dispositions and outstanding performance!



WDZ WIND 016 PLD ET

Reg. EM789836 Calved: 3-11-10 BW/CE: 91/1
Adj WW: 815

{SCHURRTOP 5627} {WCR Sir DUKE 783
LT WYOMING WIND 4020 PLD {Miss SUGAR VALLEY 908
M411450 {LT CHAP'S LADY 2170P} {LT UNLIMITED CHAPS 0109
{LT PRAIRIE MAIDEN 8095
{LHD CIGAR E46} {LHD Mr PERFECT Y416
SCC MISS MARY 3640 ET {LHD Ms CLASSIC BELL X613
F1016370 {SCC MISS MARY G009 P ET} {4-L UNLIMITED YL06 PLD
{MS SERENDIPITY Ex 15}

2013 EPDs:	BW	WW	YW	MILK	MTNL
	1.9	25	37	-3	10

✓ Purchased at 2011 BHSS, he was our pick of the sale. Absolutely gentle as a dead pig, thick, eye-appealing, and a very active bull in the pasture. He is producing great sons, with several in the offering.

Sire Abbreviations

NF Chyn Norbert's Finale 6157
503 2TM Unlimited Justice 503
406 2TM Cigar 406
T.E. 2 TM Triple Ease 405
A.C. CC Alicia's Cigar 630
818 2TM Unlimited Justice 818
504 2TM Infinite Justice 504
016 WDZ Wind 016

MGS Abbreviations

659 Chyn Sandhillier 659 (Chuckwagon)
Norb 2TM Unlimited Cigar (Cigar)
Bill HF Pastor Bill 007 (Prime Cut)
Osc 73 ACR Oscar 683 (Oscar D413)
505 Chyn Navigator 505 (Intimidator)
COR JES Corona K106 (Corona)
W EC Big Wind 873

FEATURED LOTS

€ 1 2TM Maximizer 22 Polled

Reg. M822291 Calved: 2-17-12 BW/CE: 85/1
Act. WW: 855 Adj. WW/Ratio: 753/114 ADG: 3.83
Adj. YW/Ratio: 1366/116

	{DC-OW MAXIMIZER 385PLD	{FC MAGIC WIND 0105 P
OW MAXIMIZER X89 PLD		{DC MISS JOSEY 0215 PLD
M784488	{OW MISS DESIGN 4215	{DA NEW DESIGN 104 P ET
		{JWK KIM J051 ET
	{SPARROWS ALLIANCE 513G	{LT WYOMING WIND 4020 PLD
2TM MS ALLIANCE 914		{CHARDEL PARADISE 513E
F1106170	{2TM MS 0383 WIND 601	{THREE TREES WIND 0383 ET
		{FRRS MISS IMPRESSIVE PLD

EPDs:	CED	BW	WW	YW	MILK	MTNL
	4.8	-1.2	25	38	3	16

✓ In my opinion, one of the most powerful herd bulls to be offered anywhere this year. Naturally easy-fleshing, ultra-correct, low BW with performance! Everything a bull should be, whether you're raising bulls or top-notch feeder cattle.

€ 2 2TM Maximizer 25 Polled

Reg. M822290 Calved: 2-23-12 BW/CE: 90/1
Act. WW: 840 Adj. WW/Ratio: 709/107 ADG: 3.22
Adj. YW/Ratio: 1224/104

	{DC-OW MAXIMIZER 385PLD	{FC MAGIC WIND 0105 P
OW MAXIMIZER X89 PLD		{DC MISS JOSEY 0215 PLD
M784488	{OW MISS DESIGN 4215	{DA NEW DESIGN 104 P ET
		{JWK KIM J051 ET
	{2TM CIGAR HOODOO 301 P	{LHD CIGAR E46
2TM MS UNLIMITED 301-627		{MS HOODOO BANJO Z8036
F1045429	{2TM MS CIGAR 228 PLD (*)	{LHD CIGAR E46
		{BCI MISS LIMITED 6075PLD

EPDs:	CED	BW	WW	YW	MILK	MTNL
	2.3	-1.0	22	31	9	20

✓ Another can't-miss herd bull! Flawless make-up, perfect disposition, out of an awesome cow with a perfect udder. Keep all the daughters out of this bull, no matter what color of cow you breed him to! Excellent calf.

(*) DAM OF DISTINCTION



Lot 3



Lot 7

Lot	ID	P/S/D	Sire	Dam/MGS	BD	BW	11-1	Adj. WW/ Ratio	ADG	YW/ Ratio	EPDs		
							Act. WW				BW	WW	YW
1	22W	P	OW		2-17-12	85	855	753/114	3.83	1366/116	-1.2	25	38
2	25W	P	OW		2-23-12	90	840	709/107	3.22	1224/104	-1.0	22	31
3	80B	P	504	579/Bill	4-2-12	96	880	872/132	2.70	1304/111	1.6	41	42
<i>*Tremendous calf with great performance, disposition and eye-appeal.</i>													
4	104B	S	504	6158/TE	4-6-12	89	758	755/114	3.02	1238/105	0.6	33	39
<i>*Awesome calf! Full brother to last year's co-high selling bull to Kenny Matt of Elm Springs.</i>													
5	27R	P	818	731/Cor	4-12-12	91	750	767/116	2.89	1229/104	0.7	18	24
<i>*Sharp-looking bull! You will like this good bull.</i>													
6	21W	P	X89	416/1001	2-10-12	89	925	796/113	3.33	1279/108	-1.8	26	33
<i>*This is a truly great performance bull. He will really catch your eye, but can get a little wound up sometimes. Handle him right and he will be fine. –Morgan Charolais consignment</i>													
7	59R	P	818	537/Norb	4-21-12	90	730	781/118	3.28	1305/111	0.5	32	39
<i>*Quiet, high performing, and eye-appeal. Great calf.</i>													
8	41B	P	016	58B/503	3-26-12	87	730	689/104	3.44	1240/105	1.3	30	41
<i>*Deep-bodied, thick and very docile. Super calf that really stands out.</i>													
9	82B	P	016	508/Norb	4-3-12	88	700	688/104	3.22	1203/102	0.3	28	38
<i>*Thick, easy-fleshing, deep-bodied in an attractive package. Great calf!</i>													
10	29B	P	AC	6157/TE	3-28-12	83	750	716/108	3.38	1258/107	1.5	30	45
<i>*One of my favorites – there isn't a hole in this calf anywhere!</i>													
11	50B	P	016	9119/406	3-27-12	87	725	719/109	3.61	1296/110	0.6	26	40
<i>*Moderate framed, thick and really good!</i>													
12	18G	P	504	8206/TE	4-14-12	90	775	799/121	3.05	1287/109	1.0	33	42
<i>*1/4 Red Angus. This calf has powerful performance in a docile, eye-appealing package.</i>													
13	40-0	P	818	708/W	4-20-12	93	745	789/119	3.11	1286/109	0.7	25	32
<i>*This calf won't start the sale, but could have in years past. Pretty darn good!</i>													



Lot	ID	P/S/D	Sire	Dam/MGS	BD	BW	11-1	Adj. WW/ Ratio	ADG	YW/ Ratio	EPDs		
							Act. WW				BW	WW	YW
14	147B	P	818	P110/505	4-12-12	94	740	756/115	3.23	1272/108	1.0	23	31
<i>*Long, quiet, nice pattern. Really good young calf.</i>													
15	149B	P	016	8-25B/503	4-13-12	91	705	727/110	3.37	1265/107	0.7	30	41
<i>*Deep-ribbed, powerful bull!</i>													
16	150B	P	016	631/TE	4-11-12	86	645	656/100	3.34	1190/101	0.3	24	32
<i>*Moderate-framed, thick and one of the most eye-appealing calves in the sale.</i>													
17	65B	P	504	763/406	3-30-12	91	705	679/103	3.32	1210/103	1.3	25	35
<i>*Really long, smooth and good!</i>													
18	99R	P	AC	650/406	4-29-12	96	695	767/116	3.36	1304/111	1.8	30	47
<i>*Really stout, deep-bodied, high performing calf with a great disposition.</i>													
19	36R	P	504	6X13/Bill	4-18-12	90	715	750/114	3.25	1271/108	1.1	29	38
<i>*Very masculine young calf – think you will be impressed with this great calf.</i>													
20	77B	S	AC	4103/Bill	4-3-12	97	750	738/112	3.06	1227/104	2.0	26	43
<i>*Gentle, high-performing calf that's going to get big and sire excellent feeders.</i>													
21	139B	P	NF	P24/Bill	4-8-12	101	815	819/124	2.73	1252/106	2.3	43	50
<i>*Excellent weaning performance – long and tall.</i>													
22	27W	S	X89	7069/3013	3-28-12	80	760	752/114	3.00	1232/104	2.2	27	39
<i>*From Ted Morgan – excellent calf that would have weaned even heavier if his mom wasn't 16!</i>													
23	87B	S	016	907/W	4-3-12	87	645	664/100	3.78	1268/107	-0.2	21	29
<i>*Lots of Wind in this result of the mating of half-siblings. Super correct and eye-appealing. Excellent gain.</i>													
24	25B	P	016	652/406	3-25-12	92	705	677/103	3.12	1176/100	0.9	28	36
<i>*Really good calf with an excellent disposition.</i>													
25	71B	P	818	271/Osc	4-1-12	90	725	734/111	3.03	1219/103	0.6	23	31
<i>*Square and thick, this good calf really looks like a bull!</i>													

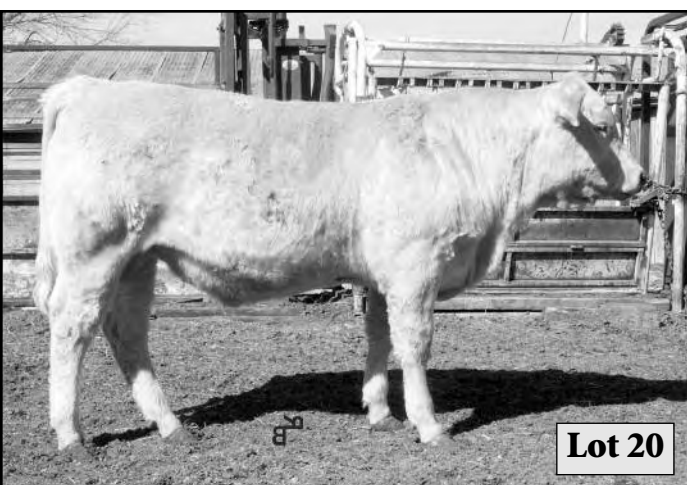


Lot 14



Lot 17

Lot	ID	P/S/D	Sire	Dam/MGS	BD	BW	11-1	Adj. WW/ Ratio	ADG	YW/ Ratio	EPDs		
							Act. WW				BW	WW	YW
26	107B	P	016	701/W	4-6-12	84	710	707/107	2.95	1178/100	-1.3	20	31
<i>*Linebred Wind. Very good calving ease, plus performance.</i>													
27	9R	P	016	8-60B/503	4-9-12	94	705	721/109	3.05	1210/103	1.2	33	40
<i>*Thick, deep and really good calf I think you'll like. Very quiet disposition.</i>													
28	32R	P	AC	745/503	4-15-12	93	695	719/109	3.20	1231/104	1.8	30	46
<i>*As deep-bodied as you will find. Good calf, excellent disposition.</i>													
29	90B	P	504	728/W	4-3-12	74	705	692/105	2.78	1137/96	0.4	21	23
<i>*Super caving ease with a lot of style.</i>													
30	65R	P	504	539/505	4-26-12	95	700	762/115	2.81	112/103	1.8	32	38
<i>*If you want a big, long, tall performance bull – here he is. Was a little sick post-weaning – it affected his gain a bit.</i>													
31	96R	D	818	8-88B/TE	4-30-12	94	640	709/107	3.28	1234/105	0.9	24	35
<i>*Maybe the longest-bodied bull in the sale. Pretty darn good.</i>													
32	7G	P	504	333/Bill	4-20-12	88	660	700/106	3.35	1237/105	1.3	26	34
<i>*Has kind of a club-calf look to him. Really stout and correct.</i>													
33	38B	S	504	6X14/Cor	3-28-12	85	670	643/97	3.29	1169/99	0.8	19	27
<i>*Light birth weight with solid performance.</i>													
34	43B	P	016	6121/Cor	3-27-12	84	610	583/89	4.16	1249/106	1.0	23	35
<i>*Mother doesn't milk the best, but this good-looking, easy-fleshing calf posted the top ADG to make up for it.</i>													
35	40B	P	AC	771/503	3-25-12	95	675	638/97	3.34	1171/99	1.5	26	41
<i>*Square-topped and quiet – good calf.</i>													
36	77R	P	NF	7-5G/503	5-2-12	102	685	766/116	3.37	1305/111	2.4	36	47
<i>*Excellent performance numbers – big and long, should fill out as he matures.</i>													
37	62B	P	AC	6156/8123	3-30-12	90	700	674/102	3.38	1216/103	1.4	29	44
<i>Thick, quiet calf with great gain!</i>													



Lot	ID	P/S/D	Sire	Dam/MGS	BD	BW	11-1	Adj. WW/ Ratio	ADG	YW/ Ratio	EPDs		
							Act. WW				BW	WW	YW
38	61B	P	016	796/W	3-29-12	84	640	614/93	2.89	1076/91	0.5	18	24
<i>*Really good light birth weight calf! If you need a bull for younger cows, he would work really well. Great eye-appeal.</i>													
39	35G	P	818	375/Osc	5-4-12	92	685	756/115	2.69	1186/101	1.1	25	30
<i>*Nice patterned, thick and eye-appealing bull that is a bit nervous.</i>													
40	11B	S	AC	6148/TE	3-23-12	84	675	634/96	2.88	1094/93	0.8	26	39
<i>*A little light on the numbers, but still came off the cow at 675# and about as nice to look at as there is – deep and thick, good calf.</i>													
41	70B	S	504	8-77B/406	3-30-12	82	700	675/102	3.06	1163/99	1.0	26	30
<i>*Light birth weight, long, quiet calf.</i>													
42	137B	016	305/Cor	4-7-12	86	620	620/94	3.25	1140/97	1.1	23	32	
<i>*Small-headed, thick and fancy calf. Light birth weight and good!</i>													
43	133B	016	664/TE	4-6-12	87	645	642/97	3.00	1122/95	0.7	20	28	
<i>*Moderate frame and easy fleshing calf.</i>													
44	34G	P	504	675/406	5-3-12	90	690	758/115	2.90	1222/104	1.4	29	40
<i>*Good young calf.</i>													
45	68G	P	504	635/Norb	5-17-12	89	610	717/108	3.06	1206/102	1.1	28	38
<i>*If you want a good young bull or a barnyard pet – here he is. He loves a good pet and scratch.</i>													
46	99G	P	504	P24/505	5-21-12	93	572	684/104	3.20	1196/100	1.3	26	35
<i>*Good young calf that is maturing nicely.</i>													
47	25R	P	AC	P117/Bill	4-12-12	97	620	635/96	3.35	1171/99	1.9	30	42
<i>*Deep-bodied and long-sided.</i>													
48	138B	S	016	9-92/W	4-7-12	82	610	640/97	2.70	1072/91	0.2	18	23
<i>*Moderate-framed, excellent calving-ease prospect plus eye-appeal.</i>													
49	35B	P	016	584/Cor	3-27-12	80	630	600/91	2.73	1036/88	-0.7	14	20
<i>*Small-head, fine-boned = best calving ease prospect in the sale. His mother has always had light calves at birth.</i>													
50	116B	P	016	9-89/W	4-6-12	79	585	612/91	2.69	1042/88	-0.6	12	18
<i>*Another excellent choice for young cows!</i>													



Lot 26



Lot 28

Coming 2's

This is a very solid, sound group of bulls. Six are virgin bulls – three have been used, but because of their age all will be trich-tested. On feed since January 1st.

Disposition is excellent on all, so help yourself to a good set of range bulls that are ready for heavy service!

Lot	ID	P/S/D	Sire	Dam/MGS	BD	BW	Adj. 205	ADG	3-1-13 Wt.	EPDs		
										BW	WW	YW
51	86W	P	504	RF86/503	6-5-11	88	746	4.04	1750	1.1	27	38
<i>*1/8 Red Angus bull that is just a really powerful individual. Virgin.</i>												
52	88W	P	504	RF932/503	6-9-11	91	726	4.16	1630	0.9	25	37
<i>*Also 1/8 Red Angus, 3/4 brother to lot 51. Good pair of bulls. Virgin.</i>												
53	109G	P	TE	483/Cor	4-10-11	87	685	3.95	1720	0.6	24	31
<i>*Every year we keep a couple of quality, middle of the road bulls for potential emergency replacements. This past year they were 109 & 110. This bull has grown to be a very impressive individual. Virgin.</i>												
54	110G	P	TE	688/Cor	4-11-11	86	679	3.89	1620	0.5	24	30
<i>*Like 51 & 52, 53 & 54 are 3/4 brothers. Thick, nice-headed bull that is smooth throughout. Used on my black and red three-year-olds in 2012.</i>												
55	79B	D	406	T169/8123	5-15-11	96	749	4.20	1670	1.3	33	47
<i>*You will get a lot of cows covered this year with this big, powerful bull. Used on red and blacks, 2012, trich-tested.</i>												
56	85B	P	818	RF9-7/RA	5-18-11	85	701	3.85	1550	0.6	22	29
<i>*1/4 Red Angus. This is an aggressive pasture bull. Used him on black cows last year and he covered a lot of country. Thick, correct bull that is pretty darn good. Trich-tested.</i>												
57	86B	P	TE	530/Bill	5-20-11	88	681	4.25	1660	1.0	25	40
<i>*Nice bull – long and good temperament. Virgin.</i>												
58	83W	P	NF	P22/659	5-30-11	97	732	3.93	1820	1.9	37	45
<i>*Big, long performance bull. Virgin.</i>												
59	159G	P	406	795/503	5-9-11	82	650	3.80	1600	0.3	23	31
<i>*Moderate-framed, easy-fleshing, docile calving ease bull. Virgin.</i>												



Lot 51



Lot 53

Coming in 2014 - Sons of these outstanding Junior Herd Bulls!



G

JAB BULLET IN THE GUN 102 PLD ET

Reg. EM805269
BW: 90

Calved: 1-3-11
WW: 775

{SCHURRTOP 5627
LT WYOMING WIND 4020 PLD
M411450
{LT CHAP'S LADY 2170P

{LHD CIGAR E46
SCC MS BUD 418-1128 ET
F945574
{RC MS BUD 418 POLLED

{WCR SIR DUKE 783
{MISS SUGAR VALLEY 908
{LT UNLIMITED CHAPS 0109
{LT PRAIRIE MAIDEN 8095

{LHD MR PERFECT Y416
{LHD MS CLASSIC BELL X613
{RC BUD 04 ET
{MISS SHOWGUN RC 416

2013 EPDs:	BW	WW	YW	MILK	MTNL
	1.0	24	41	5	17

✓ BHSS 2012 GRAND CHAMPION CHAROLAIS BULL –
expecting great things from this young powerhouse!



H

2H TLC COPPERHEAD 102Y PLD

Reg. EM803268
BW: 93

Calved: 2-18-11
WW: 726

{SCHURRTOP 5627
LT WYOMING WIND 4020 PLD
M411450
{LT CHAP'S LADY 2170P

{WCR PRIME CUT 764 PLD
OBG ELVIRA 4303 PLD
F1013185
{BALDRIDGE ELVIRA 120M ET

{WCR SIR DUKE 783
{MISS SUGAR VALLEY 908
{LT UNLIMITED CHAPS 0109
{LT PRAIRIE MAIDEN 8095

{JWK IMPRESSIVE D040 ET
{WCR MISS EASE 4314
{VCR SIR DUKE 914 PLD
{BALDRIDGE ELVIRA 62D

2013 EPDs:	BW	WW	YW	MILK	MTNL
	0.5	24	44	4	16

✓ Easy fleshing, thick, docile and EXCELLENT quality!



I

WDZ MONTEZUMA 107 P

Reg. M801465
BW: 96

Calved: 2-12-11

{SVY FREEDOM PLD 307N
GERRARD MONTEZUMA 6T
M782900
{GERRARD ROXANNE 18P

{THOMAS REDNECK 2609M
SFC KALLY 702
F1065284
{COMPOSERS TAMMY ET

{HFCC PLD EVOLUTION 5L
{SVY PURRFECT 184L
{RP IMPRESSED 121L
{GERRARD ROXANNE 87M

{THOMAS OAHE WIND 0772ET P
{TR MS AJ 9664
{RC BUDSMYDAD 225 POLLED
{COMPOSERS BEVERLY PLD ET

2013 EPDs:	BW	WW	YW	MILK	MTNL
	3.1	29	51	2	16

✓ A new bloodline for us. Excited to see what the performance
“pop” will be on our linebred Wind-Justice-Cigar cowherd. By
National Champion Montezuma – a great bull in his own right.



J

2TM REVELATION 120

Reg. M813230
BW: 84

Calved: 10-3-11
Adj. WW: 781

{HOODOO SLASHER 1144
D R REVELATION 467
EM755482
{DR WC FOREVER LUCY 372ET

{PFINFINITEJUSTICE1001PET
2TM MS UNLIMITED1001-421 **Dam of Distinction
F999323
{BCI MISS LIMITED 6075PLD

{HOODOO CROOK 7118
{MISS HOODOO Z6151
{BALDRIDGE CADILLAC 74E
{JD MS COMMANDER B309

{PF IMPRESSED 620 P ET
{VCR MISS DUCHESS 351 PLD
{SKYMONT P UNLIMITED 0115
{MISS THAIDA 9912

2013 EPDs:	BW	WW	YW	MILK	MTNL
	-2.5	19	30	7	16

✓ 2013 BHSS Grand Champion – look for sons in 2015!!



DEERING'S HEYENNE CHAROLAIS

17960 Base Line Road

Wasta, South Dakota 57791

FIRST CLASS MAIL
U.S. POSTAGE
PAID
PHILIP, SD
PERMIT NO. 20



20th Annual
Charolais Bull Sale
Tuesday, April 16, 2013
12:00 p.m. MT
at Philip (SD) Livestock Auction
SELLING: 50 Yearling
& 10 Two-Year-Old Bulls

